

RichMir
Private Adult Community, Village of West
Jefferson, Madison County, Ohio
Street, Storm & Water

OFF-SITE DIMENSION & GRADING PLAN

2 WORKING DAYS
BEFORE YOU DIG
CALL TOLL FREE 800-362-2764
OHIO UTILITIES PROTECTION SERVICE

SANDS DECKER LTD.
ENGINEERS PLANNERS
WWW.SANDSDECKER.COM

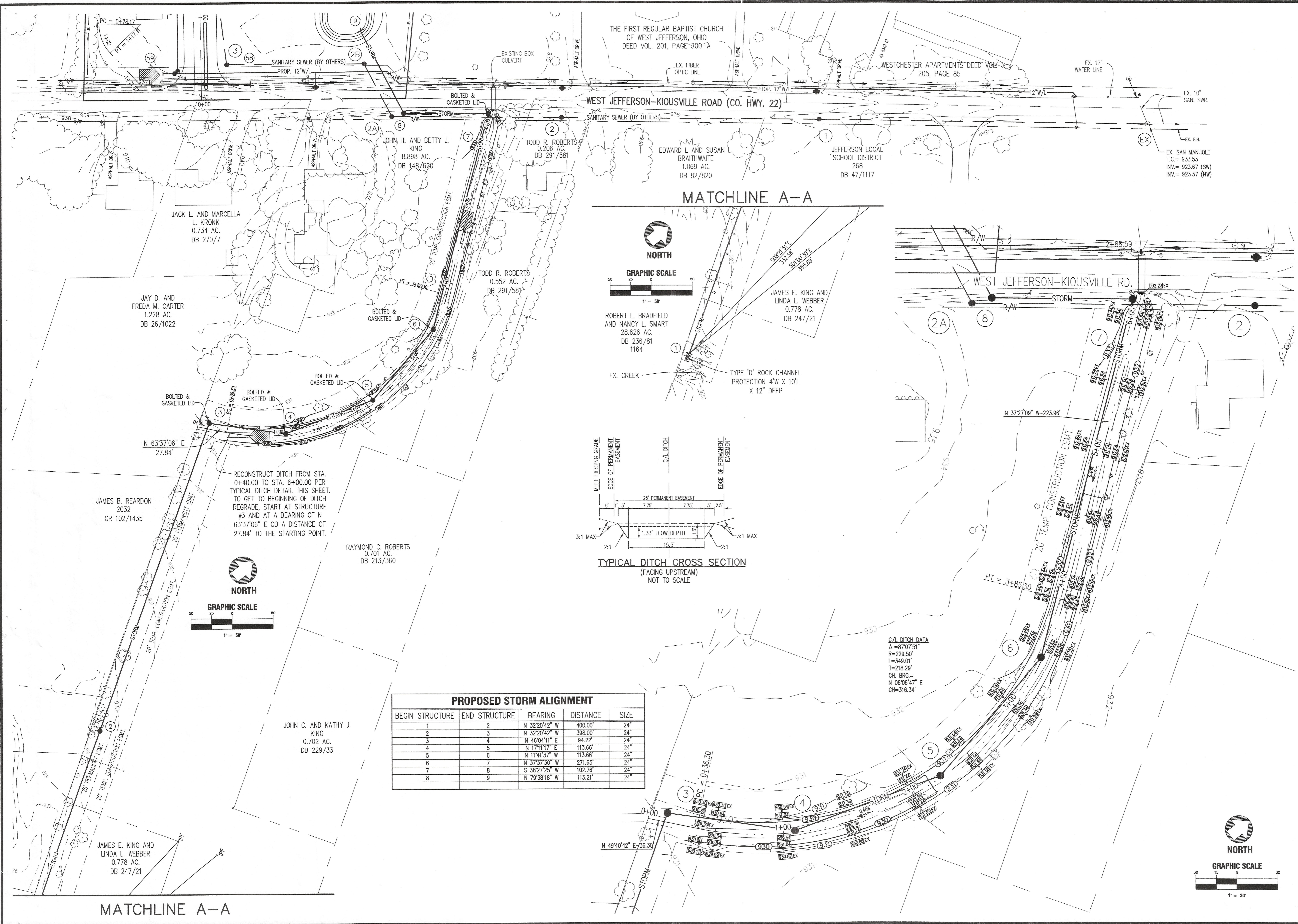
614 - 538 - 8560
Fax: 614 - 538 - 8561

4588 Kenny Road
Columbus, Ohio 43220

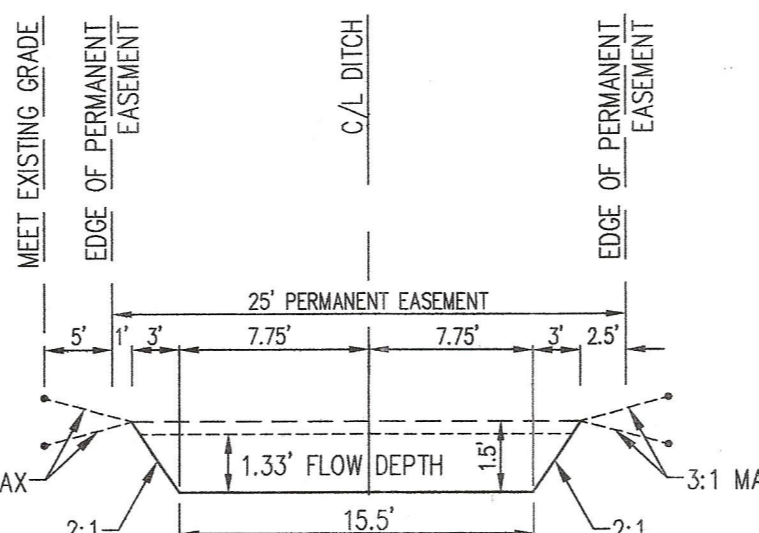
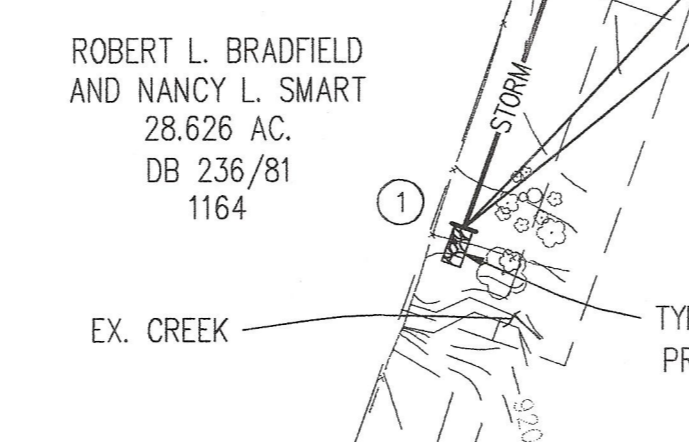
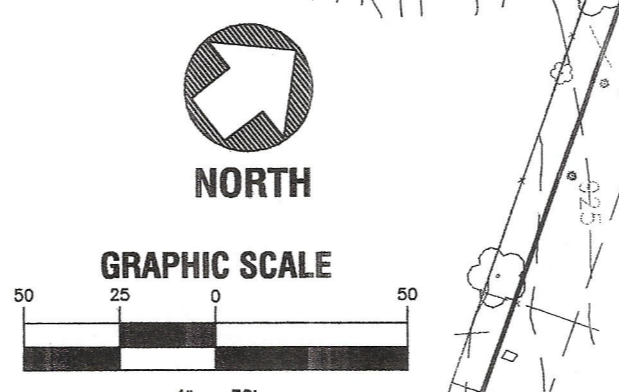
SCALE:
AS SHOWN

REVISIONS:

PROJECT #: 1156

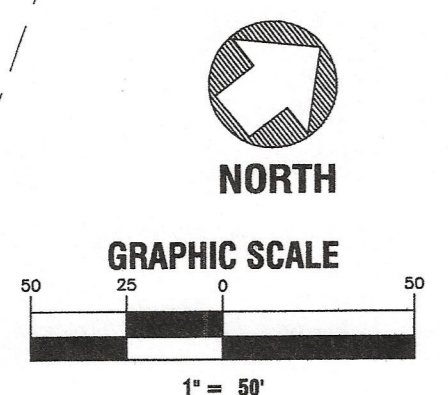


MATCHLINE A-A



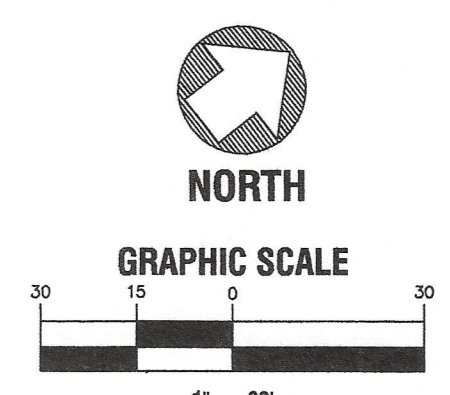
TYPICAL DITCH CROSS SECTION
(FACING UPSTREAM)
NOT TO SCALE

RECONSTRUCT DITCH FROM STA. 0+40.00 TO STA. 6+00.00 PER TYPICAL DITCH DETAIL THIS SHEET. TO GET TO BEGINNING OF DITCH REGRADE, START AT STRUCTURE #3 AND AT A BEARING OF N 63°37'06" E GO A DISTANCE OF 27.84' TO THE STARTING POINT.



| PROPOSED STORM ALIGNMENT | | | | |
|--------------------------|---------------|---------------|----------|------|
| BEGIN STRUCTURE | END STRUCTURE | BEARING | DISTANCE | SIZE |
| 1 | 2 | N 32°20'42" W | 400.00' | 24" |
| 2 | 3 | N 32°20'42" W | 398.00' | 24" |
| 3 | 4 | N 46°04'11" E | 94.22' | 24" |
| 4 | 5 | N 17°11'17" E | 113.66' | 24" |
| 5 | 6 | N 11°41'37" W | 113.66' | 24" |
| 6 | 7 | N 37°37'30" W | 271.65' | 24" |
| 7 | 8 | S 38°27'25" W | 102.76' | 24" |
| 8 | 9 | N 79°38'18" W | 113.21' | 24" |

C/A DITCH DATA
Δ = 87°07'51"
R = 229.50'
L = 349.01'
T = 218.29'
CH. BRG. =
N 06°06'47" E
CH = 316.34'



MATCHLINE A-A