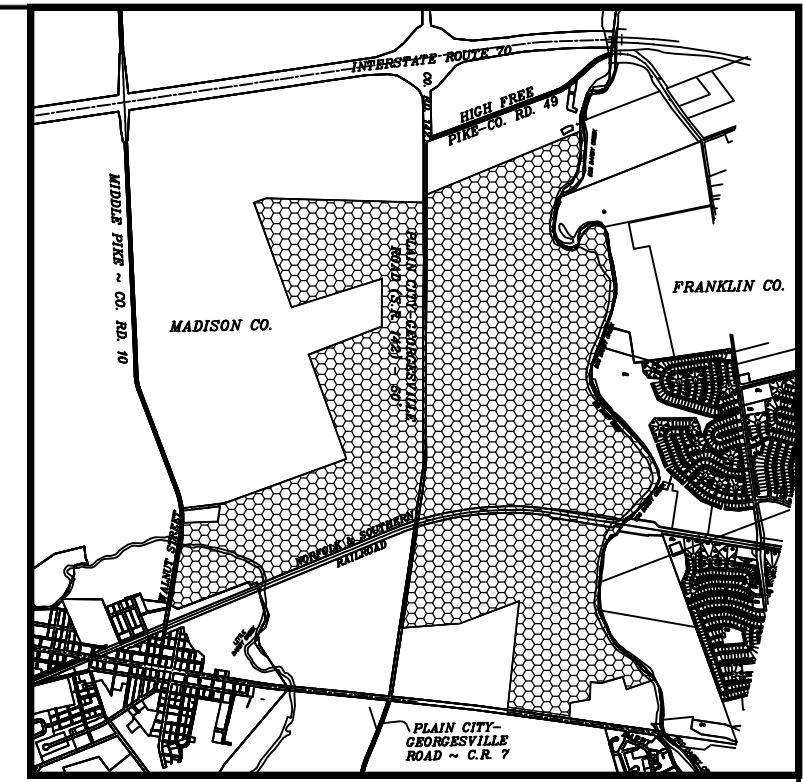


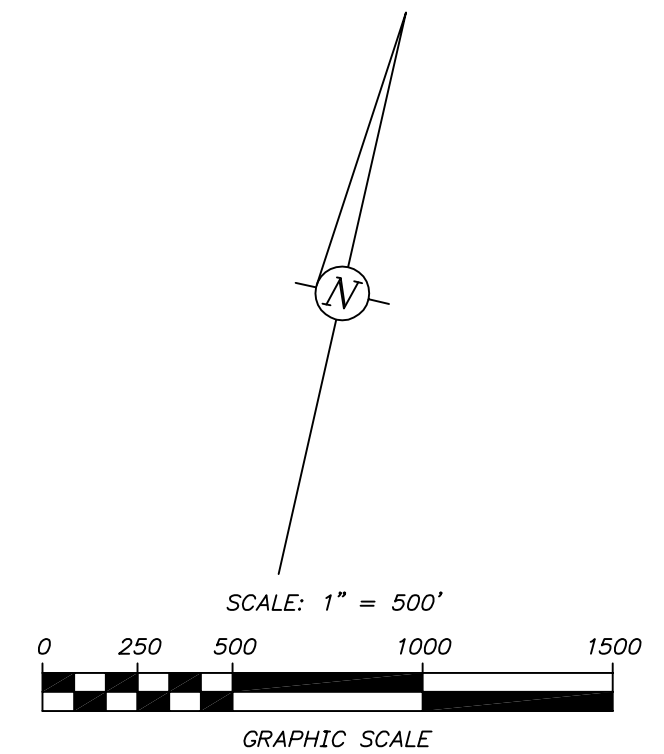
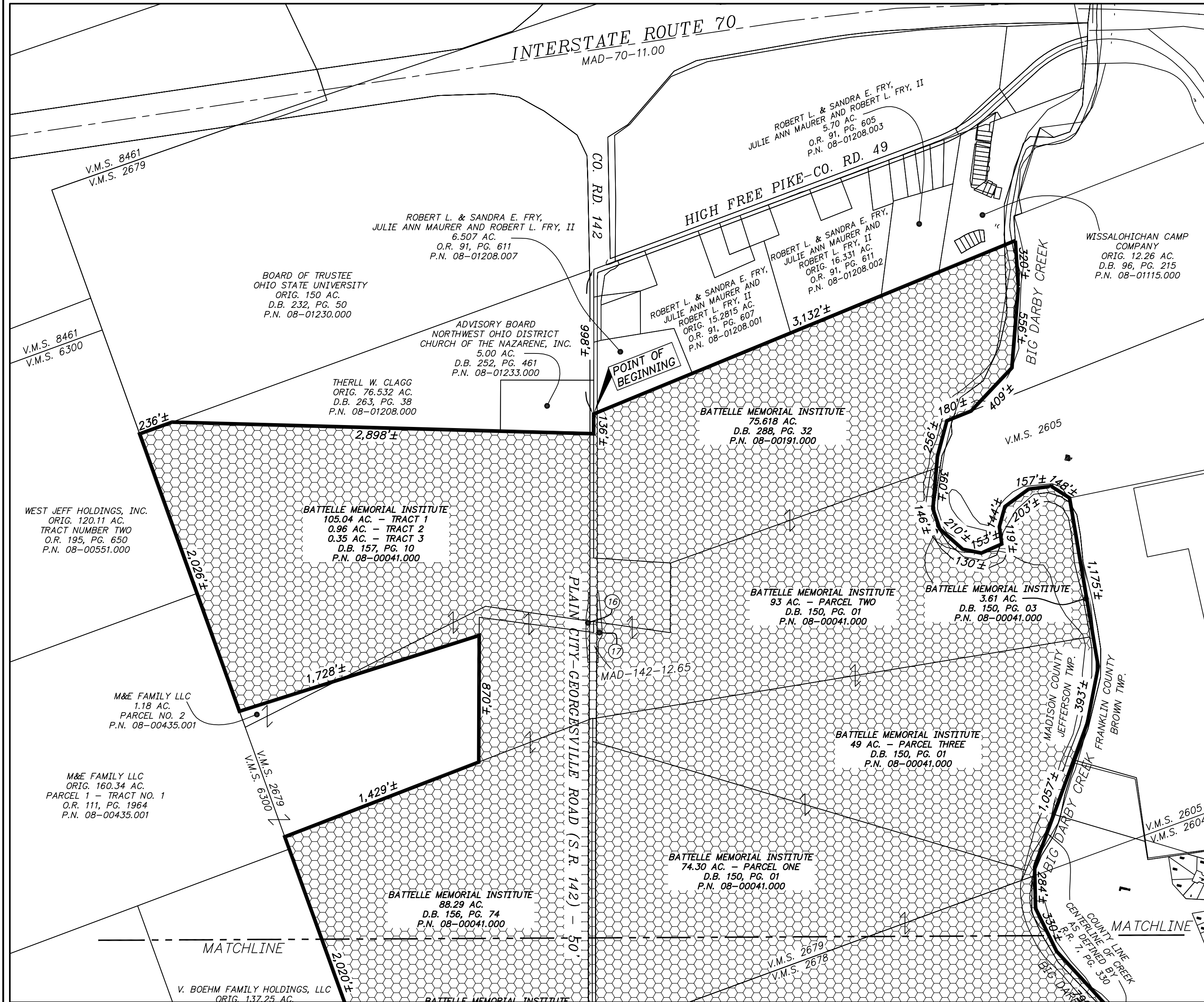
ANNEXATION PLAT

TO THE VILLAGE OF WEST JEFFERSON, MADISON COUNTY, OHIO

Situated in the State of Ohio, County of Madison, the Township of Jefferson in Virginia Military Survey Nos. 1410, 2677, 2678, 2679, 2836 & 6300.



LOCATION MAP
NOT TO SCALE



- PROPOSED VILLAGE OF WEST JEFFERSON CORPORATION LINE.
- EXISTING VILLAGE OF WEST JEFFERSON CORPORATION LINE.
- AREA TO BE ANNEXED.

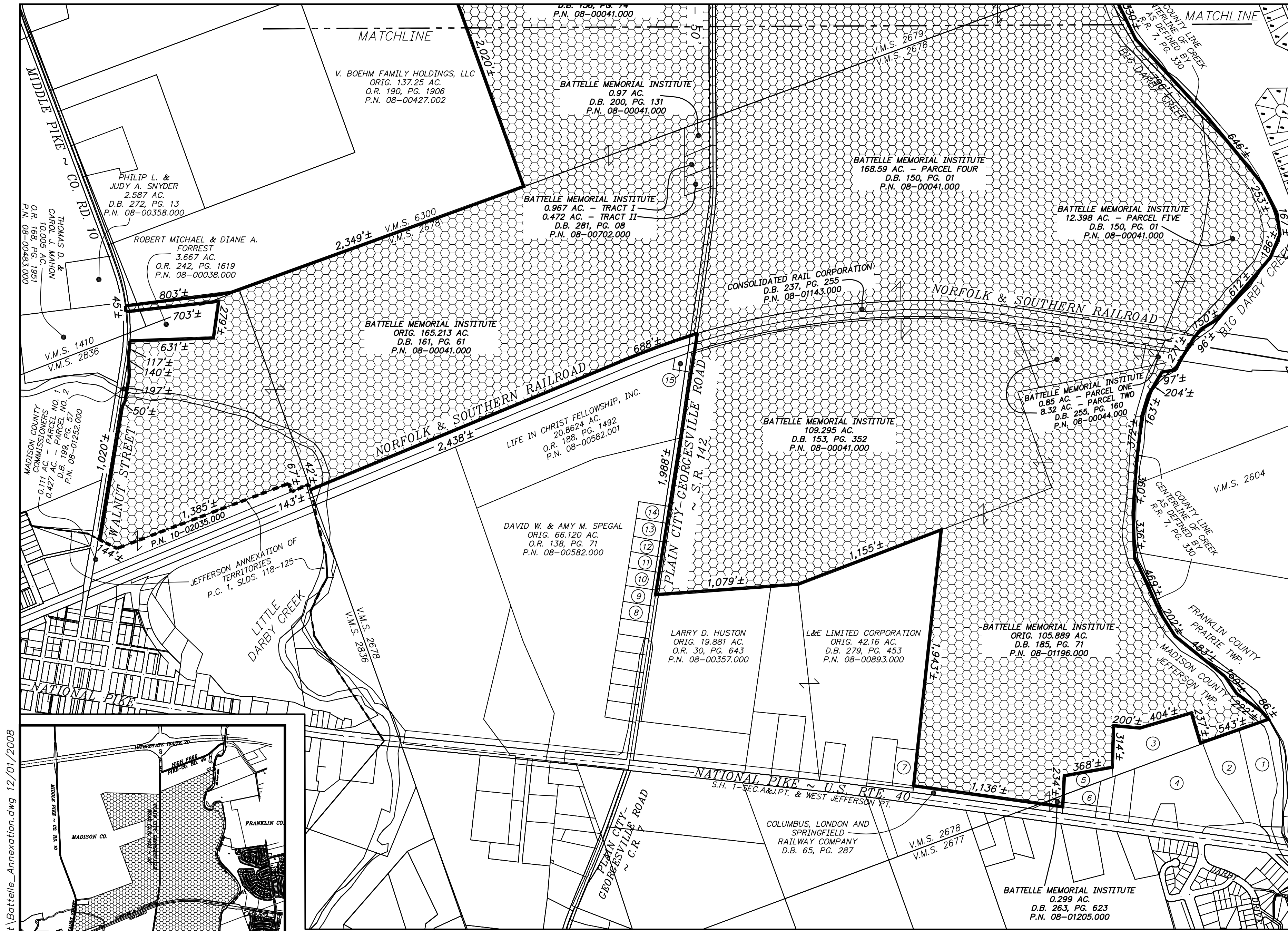
THIS PLAT WAS PREPARED FROM BEST AVAILABLE COURT HOUSE RECORDS IN OCTOBER, 2008 & MADISON COUNTY GIS MAPPING AND NOT FROM AN ACTUAL FIELD SURVEY.

C.F. BIRD & R.J. BULL, INC.
ENGINEERS / SURVEYORS
2875 W. DUBLIN-GRANVILLE RD.
COLUMBUS, OHIO 43235 (614) 761-1661

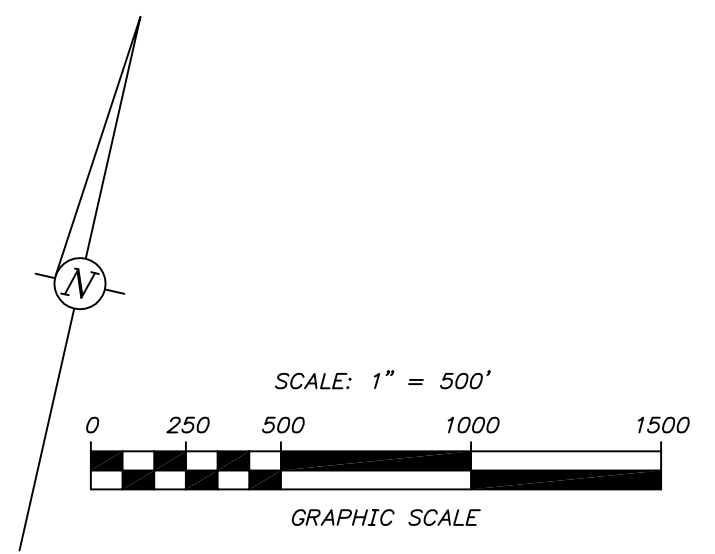
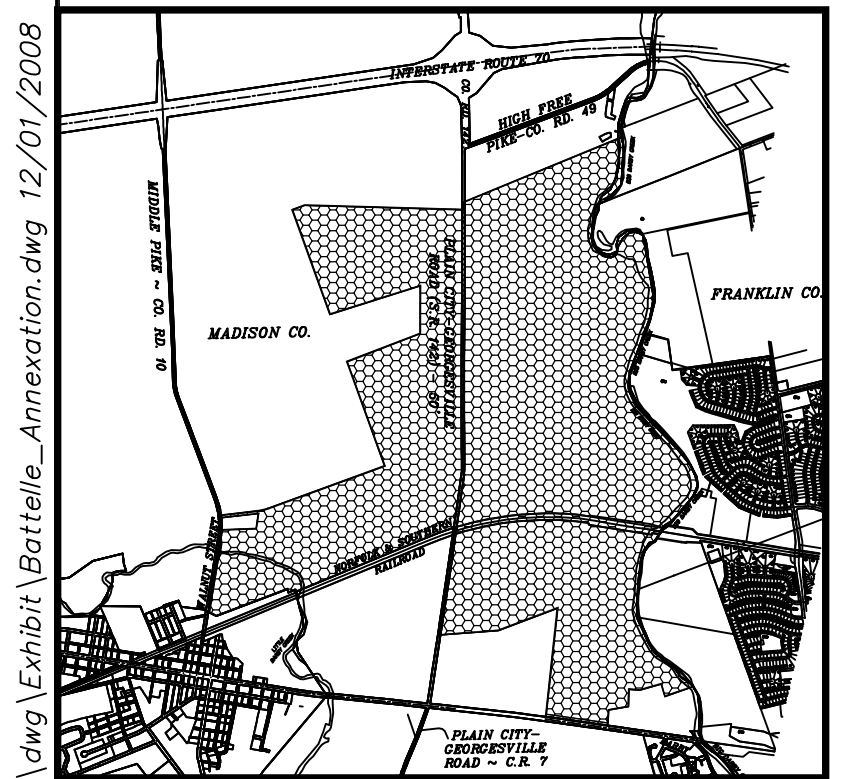
PROPOSED ANNEXATION OF 1,090(±) ACRES
TO THE
THE VILLAGE OF WEST JEFFERSON, OHIO
FROM
JEFFERSON TOWNSHIP,
MADISON COUNTY, OHIO
(IN VIRGINIA MILITARY SURVEY NOS. 1410, 2677, 2678, 2679, 2836 & 6300)

NOVEMBER 20, 2008

H:\Jobs\2008\092\ACAD\dwg\Exhibit\Battelle_Annexation.dwg 12/01/2008



- 1 THE NATURE CONSERVANCY TRACT I - 4.29 AC. O.R. 13175, PG. D 11 P.N. 08-00300.000
- 2 THE NATURE CONSERVANCY TRACT II - 3.35 AC. O.R. 13175, PG. D 11 P.N. 08-00300.000
- 3 MARTHA J. SALYERS, TRUSTEE SECOND TRACT - 3.934 AC. D.B. 297, PG. 368 P.N. 08-00477.000
- 4 MARTHA J. SALYERS, TRUSTEE FIRST TRACT - 7.642 AC. D.B. 297, PG. 368 P.N. 08-00477.000
- 5 DENNIS W. & WINONA R. TODD 0.913 AC. D.B. 263, PG. 626 P.N. 08-01197.000
- 6 DENNIS W. & WINONA R. TODD ORIG. 1.954 AC. D.B. 262, PG. 196 P.N. 08-01204.000
- 7 WILLIAM C. & DIANNE L. BRADFORD 1.00 AC. D.B. 199, PG. 473 P.N. 08-00084.000
- 8 ROBERT WILLIAM & PATSY L. WHITMER 0.645 AC. O.R. 160, PG. 225 P.N. 08-01099.000
- 9 SHAWN A. & ANDREA N. BUESCHER 0.645 AC. O.R. 240, PG. 297 P.N. 08-00237.000
- 10 CHARLES E. & YVONDA R. ELLIS 0.645 AC. D.B. 290, PG. 217 P.N. 08-00593.000
- 11 BRIAN D., LAURA J., & TODD J. PICKEN 0.645 AC. O.R. 204, PG. 2200 P.N. 08-00397.000
- 12 LINDA S. PELPHREY 0.645 AC. O.R. 184, PG. 1471 P.N. 08-00397.000
- 13 RICHARD M. & JO ANN LUKIE 0.645 AC. D.B. 175, PG. 442 P.N. 08-00561.000
- 14 THOMAS R. & JAON B. FALCO 0.645 AC. D.B. 274, PG. 929 P.N. 08-00105.000
- 15 COLUMBUS AND SOUTHERN OHIO ELECTRIC COMPANY 0.38 AC. D.B. 146, PG. 298 P.N. 08-01142.000
- 16 STATE OF OHIO 0.0622 AC. - PARCEL NO. 1WD -FIRST TRACT- D.B. 286, PG. 758 P.N. 08-00041.001
- 17 STATE OF OHIO 0.0396 AC. - PARCEL NO. 1WD -SECOND TRACT- D.B. 286, PG. 758 P.N. 08-00041.001



- PROPOSED VILLAGE OF WEST JEFFERSON CORPORATION LINE.
- - - EXISTING VILLAGE OF WEST JEFFERSON CORPORATION LINE.
- ▨ AREA TO BE ANNEXED.

THIS PLAT WAS PREPARED FROM BEST AVAILABLE COURT HOUSE RECORDS IN OCTOBER, 2008 & MADISON COUNTY GIS MAPPING AND NOT FROM AN ACTUAL FIELD SURVEY.

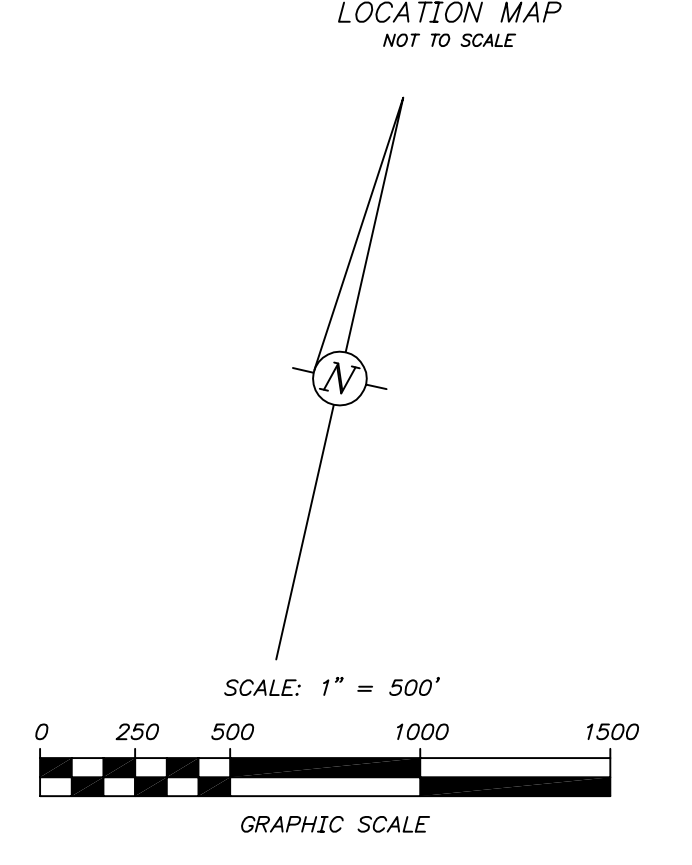
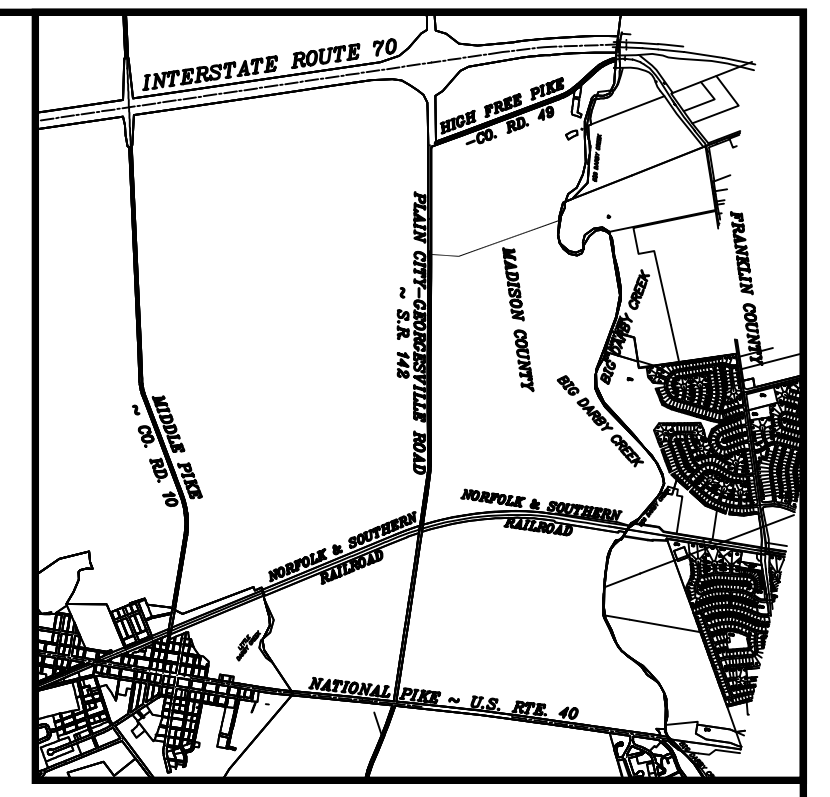
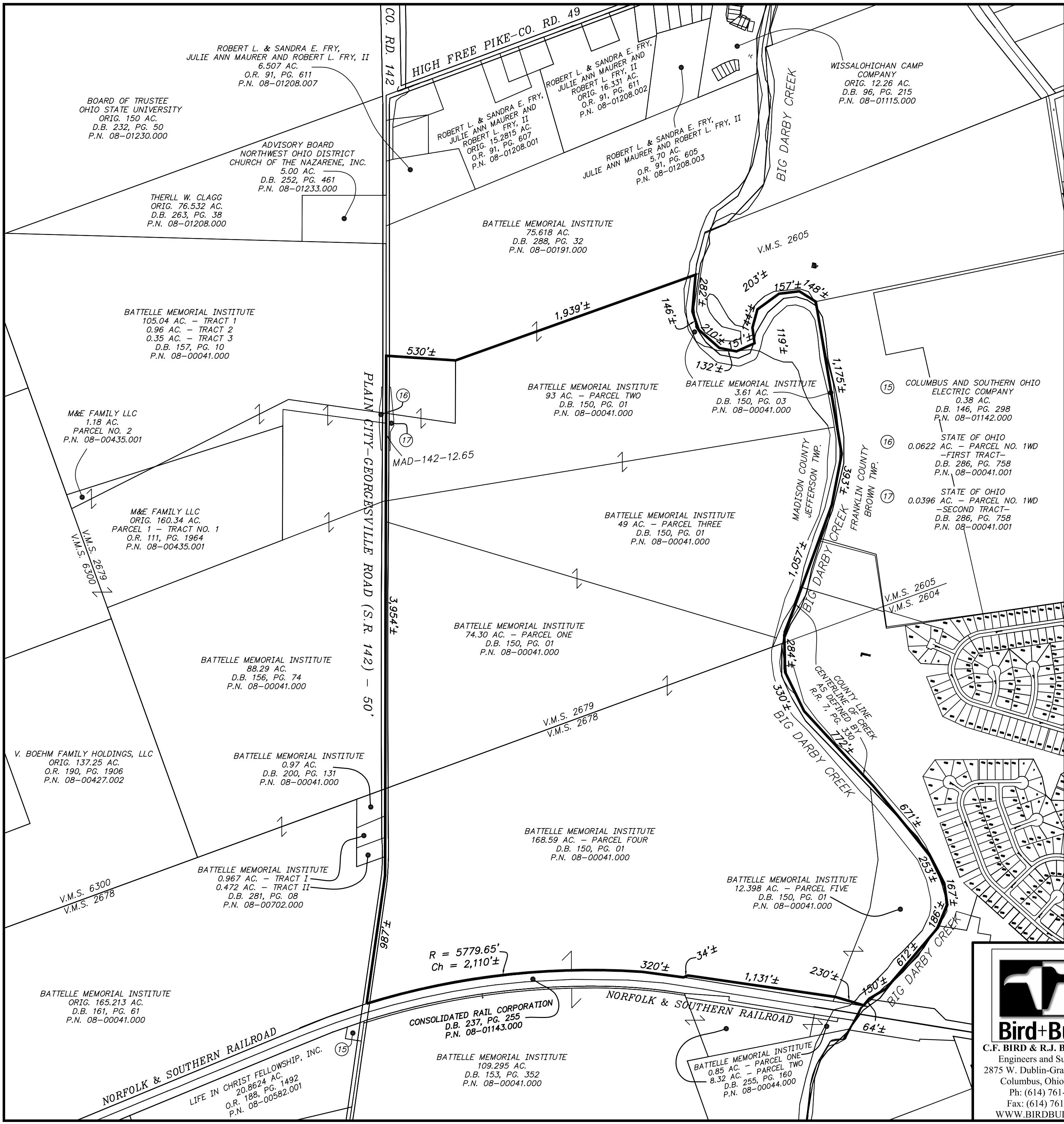
C.F. BIRD & R.J. BULL, INC.
 ENGINEERS / SURVEYORS
 2875 W. DUBLIN-GRANVILLE RD.
 COLUMBUS, OHIO 43235 (614) 761-1661

PROPOSED ANNEXATION OF 1,090(±) ACRES TO THE VILLAGE OF WEST JEFFERSON, OHIO FROM JEFFERSON TOWNSHIP, MADISON COUNTY, OHIO

(IN VIRGINIA MILITARY SURVEY NOS. 1410, 2677, 2678, 2679, 2836 & 6300)

NOVEMBER 20, 2008

H:\Jobs\2008\092\ACAD\dwg\Exhibit\Battelle_TIF_Boundary_1.dwg 05/18/2009



Bird+Bull
Engineers + Surveyors

C.F. BIRD & R.J. BULL, INC.
Engineers and Surveyors
2875 W. Dublin-Granville Road
Columbus, Ohio 43235
Ph: (614) 761-1661
Fax: (614) 761-1328
WWW.BIRDBULL.COM

BATTELLE MEMORIAL INSTITUTE
VILLAGE OF WEST JEFFERSON, OHIO

TIF BOUNDARY EXHIBIT

SCALE: 1" = 500'	JOB NO.	1
DWN: KLB CKD:	MAY 18, 2009	08-092

May 30, 2012

**DESCRIPTION OF AN ELECTRIC EASEMENT
EAST FROM PLAIN CITY-GEORGESVILLE ROAD (S.R. 142),
NORTH OF NATIONAL PIKE (U.S. 40),
VILLAGE OF WEST JEFFERSON, MADISON CO., OHIO**

Situated in the State of Ohio, County of Madison, Village of West Jefferson, in Virginia Military Survey Nos. 2678 and being an easement, the majority of which is ten (10) feet in width, for electric purposes through a portion of a 168.59 acre tract of land conveyed to Battelle Memorial Institute by deed of record in Deed Book 150, Page 01, all records referenced to the Recorder's Office, Madison County, Ohio, said easement bounded and described as follows:

Beginning at a point in the centerline of Plain City-Georgesville Road ~ S.R. 142 (50 feet in width), said point being N 04° 30' 01" W a distance of 48+/- feet from a point at the intersection of the centerline of Plain City-Georgesville Road ~ S.R. 142 with the curved northerly line of a tract of land conveyed to Consolidated Rail Corporation by deed of record in Deed Book 237, Page 255, said point also being N 03° 28' 48" E a distance of 194.94 feet from an iron pipe found at the intersection of the curved southerly line of said Consolidated Rail Corporation with the curved northerly line of a 0.38 acre tract of land conveyed to Columbus and Southern Ohio Electric Company by deed of record in Deed Book 146, Page 298 and with the westerly right-of-way line of Plain City-Georgesville Road ~ S.R. 142;

thence N 04° 41' 42" W along the centerline of Plain City-Georgesville Road ~ S.R. 142 and along a portion of a west line of said 168.59 acre tract a distance of 12.94 feet to a point;

thence crossing a portion of said original 168.59 acre tract the following Thirty-Six (36) courses:

1. N 45° 55' 37" E a distance of 89.49 feet to a point;
2. N 30° 54' 09" W a distance of 20.62 feet to a point;
3. N 59° 05' 51" E a distance of 10.00 feet to a point;
4. S 30° 54' 09" E a distance of 19.97 feet to a point;
5. N 63° 34' 22" E a distance of 221.29 feet to a point;
6. N 64° 07' 50" E a distance of 237.86 feet to a point;
7. N 67° 27' 14" E a distance of 225.56 feet to a point;
8. N 68° 15' 49" E a distance of 226.96 feet to a point;
9. N 71° 11' 01" E a distance of 226.29 feet to a point;
10. N 72° 58' 31" E a distance of 225.57 feet to a point;
11. N 75° 53' 41" E a distance of 224.69 feet to a point;
12. N 76° 46' 04" E a distance of 224.30 feet to a point;
13. N 75° 59' 32" E a distance of 283.06 feet to a point;
14. N 75° 42' 01" E a distance of 224.02 feet to a point;
15. N 32° 52' 51" W a distance of 220.92 feet to a point;
16. N 33° 08' 29" W a distance of 186.62 feet to a point;
17. N 57° 02' 48" E a distance of 10.00 feet to a point;
18. S 33° 08' 29" E a distance of 186.64 feet to a point;
19. S 32° 52' 51" E a distance of 224.31 feet to a point;
20. N 75° 42' 01" E a distance of 30.37 feet to a point;

May 30, 2012

21. S 14° 17' 59" E a distance of 10.00 feet to a point;
22. S 75° 42' 01" W a distance of 27.01 feet to a point;
23. S 29° 18' 14" E a distance of 27.38 feet to a point;
24. S 60° 41' 46" W a distance of 10.00 feet to a point;
25. N 29° 18' 14" W a distance of 30.06 feet to a point;
26. S 75° 42' 01" W a distance of 227.61 feet to a point;
27. S 75° 59' 32" W a distance of 283.16 feet to a point;
28. S 76° 46' 04" W a distance of 224.30 feet to a point;
29. S 75° 53' 41" W a distance of 224.36 feet to a point;
30. S 72° 58' 31" W a distance of 225.16 feet to a point;
31. S 71° 11' 01" W a distance of 225.88 feet to a point;
32. S 68° 15' 49" W a distance of 226.64 feet to a point;
33. S 67° 27' 14" W a distance of 225.20 feet to a point;
34. S 64° 07' 50" W a distance of 237.53 feet to a point;
35. S 63° 34' 22" W a distance of 225.09 feet to a point;
36. S 45° 55' 37" W a distance of 100.88 feet to the place of beginning;

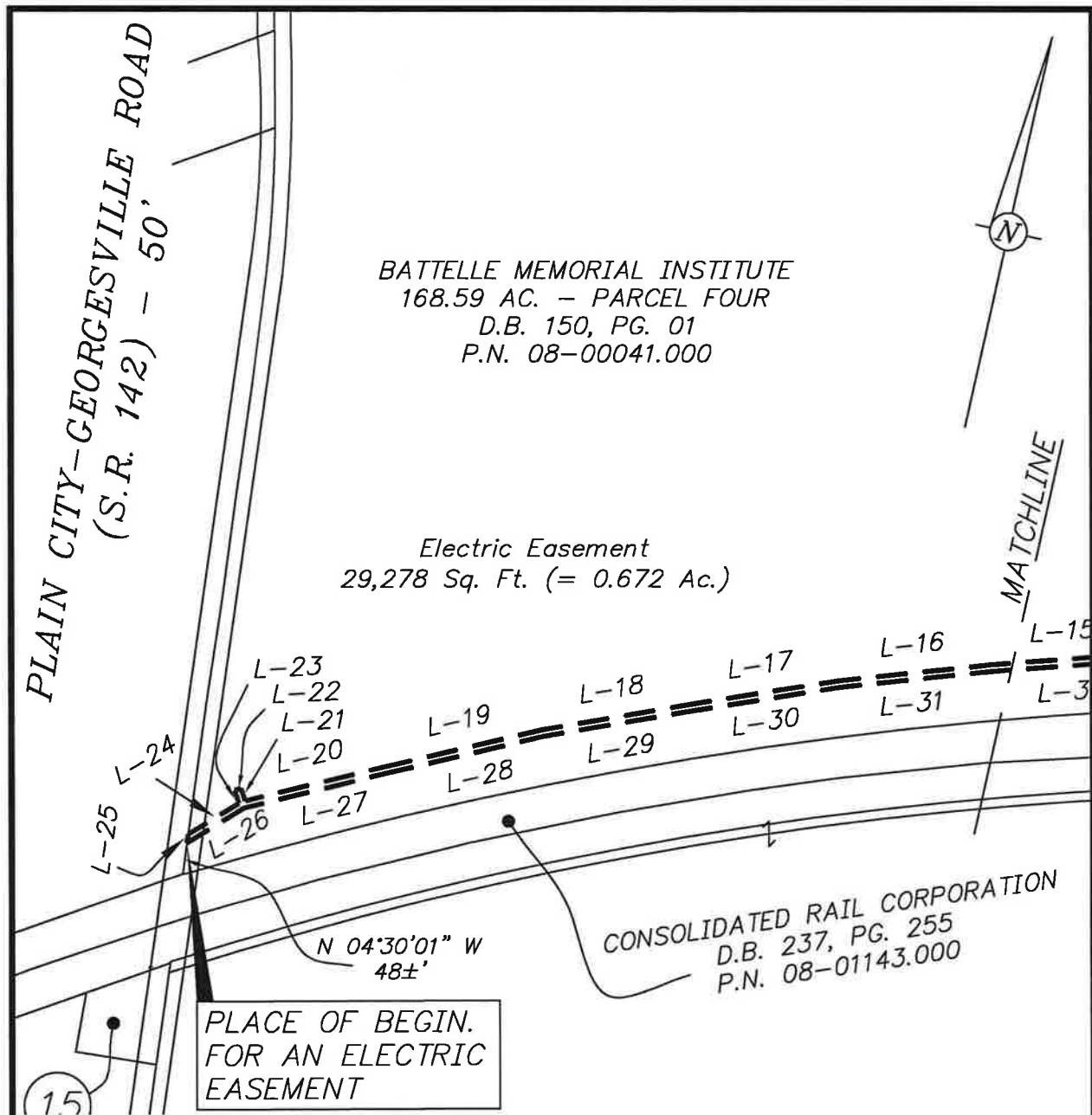
containing 29,278 square feet (= 0.672 acre) of land, more or less.

The above annexation description was prepared by Kevin L. Baxter, Ohio Surveyor No.7697, of C.F. Bird & R.J. Bull, Inc., consulting Engineers & Surveyors, Columbus, Ohio, from best available Court House records, in March, 2011, and not from an actual field survey. Basis of bearings are based of State Plain Coordinate System between Madison County monuments 02-001 and 02-018, Ohio South Zone (NAD83 – 1995), and all other bearings are based upon this meridian.

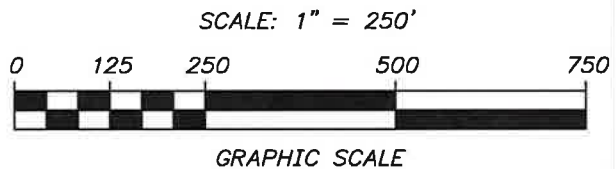
Kevin L. Baxter

Kevin L. Baxter ~ Ohio Surveyor #7697





Basis of bearings is: Based on State Plain Coordinate System between Mad. Co. GPS Monument 02-001 and 02-018, Ohio South Zone (NAD83 - 1995), and all other bearings are based upon this Meridian.



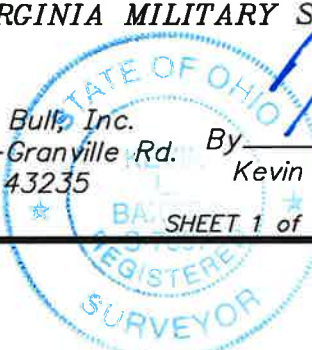
**EXHIBIT OF AN ELECTRIC EASEMENT,
EAST FROM PLAIN CITY-GEORGESVILLE ROAD (S.R. 142),
NORTH OF NATIONAL PIKE (U.S. 40),
VILLAGE OF WEST JEFFERSON, MADISON CO., OHIO
(IN VIRGINIA MILITARY SURVEY NO. 2678)**

SCALE: 1" = 250'

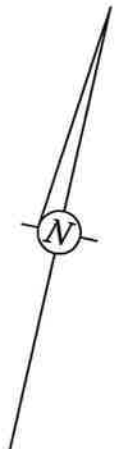


C.F. Bird & R.J. Bull, Inc.
2875 W. Dublin-Granville Rd.
Columbus, Ohio 43235

By *Kevin L. Baxter* MAY 30, 2012
Kevin L. Baxter ~ Ohio Surveyor No. 7697

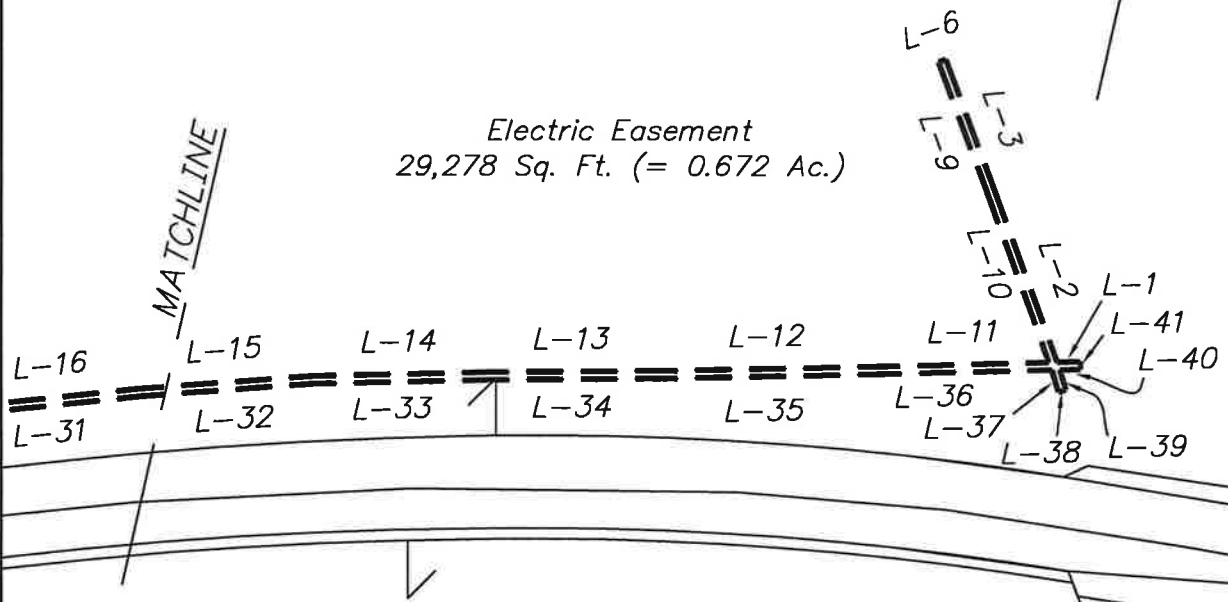


BATTELLE MEMORIAL INSTITUTE
168.59 AC. – PARCEL FOUR
D.B. 150, PG. 01
P.N. 08-00041.000



Electric Easement
29,278 Sq. Ft. (= 0.672 Ac.)

MATCHLINE



CORPORATION
G. 255
43.000

BATTELLE MEMORIAL INSTITUTE
109.295 AC.
D.B. 153, PG. 352
P.N. 08-00041.000

Basis of bearings is: Based on State Plain Coordinate System between Mad. Co. GPS Monument 02-001 and 02-018, Ohio South Zone (NAD83 – 1995), and all other bearings are based upon this Meridian.

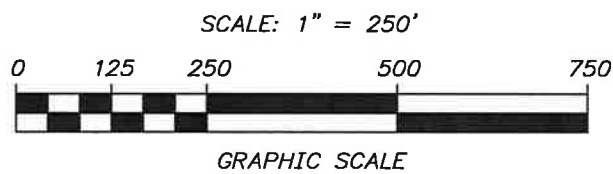



EXHIBIT OF AN ELECTRIC EASEMENT,
EAST FROM PLAIN CITY-GEORGESVILLE ROAD (S.R. 142),
NORTH OF NATIONAL PIKE (U.S. 40),
VILLAGE OF WEST JEFFERSON, MADISON CO., OHIO
(IN VIRGINIA MILITARY SURVEY NO. 2678)

SCALE: 1" = 250'

MAY 30, 2012

 C.F. Bird & R.J. Bull, Inc.
2875 W. Dublin-Granville Rd.
Columbus, Ohio 43235

LINE TABLE		
	BEARING	LENGTH
L-1	N 75°42'01" E	30.37'
L-2	S 32°52'51" E	224.31'
L-3	S 33°08'29" E	186.64'
L-4	Intentionally	Omitted
L-5	Intentionally	Omitted
L-6	N 57°02'48" E	10.00'
L-7	Intentionally	Omitted
L-8	Intentionally	Omitted
L-9	N 33°08'29" W	186.62'
L-10	N 32°52'51" W	220.92'
L-11	N 75°42'01" E	224.02'
L-12	N 75°59'32" E	283.06'
L-13	N 76°46'04" E	224.30'
L-14	N 75°53'41" E	224.69'
L-15	N 72°58'31" E	225.57'
L-16	N 71°11'01" E	226.29'
L-17	N 68°15'49" E	226.96'
L-18	N 67°27'14" E	225.56'
L-19	N 64°07'50" E	237.86'
L-20	N 63°34'22" E	221.29'
L-21	S 30°54'09" E	19.97'

LINE TABLE		
	BEARING	LENGTH
L-22	N 59°05'51" E	10.00'
L-23	N 30°54'09" W	20.62'
L-24	N 45°55'37" E	89.49'
L-25	N 04°41'42" W	12.94'
L-26	S 45°55'37" W	100.88'
L-27	S 63°34'22" W	225.09'
L-28	S 64°07'50" W	237.53'
L-29	S 67°27'14" W	225.20'
L-30	S 68°15'49" W	226.64'
L-31	S 71°11'01" W	225.88'
L-32	S 72°58'31" W	225.16'
L-33	S 75°53'41" W	224.36'
L-34	S 76°46'04" W	224.30'
L-35	S 75°59'32" W	283.16'
L-36	S 75°42'01" W	227.61'
L-37	N 29°18'14" W	30.06'
L-38	S 60°41'46" W	10.00'
L-39	S 29°18'14" E	27.38'
L-40	S 75°42'01" W	27.01'
L-41	S 14°17'59" E	10.00'

Basis of bearings is: Based on State Plain
Coordinate System between Mad. Co. GPS
Monument 02-001 and 02-018, Ohio South
Zone (NAD83 - 1995), and all other bearings
are based upon this Meridian.

**EXHIBIT OF AN ELECTRIC EASEMENT,
EAST FROM PLAIN CITY-GEORGESVILLE ROAD (S.R. 142),
NORTH OF NATIONAL PIKE (U.S. 40),
VILLAGE OF WEST JEFFERSON, MADISON CO., OHIO
(IN VIRGINIA MILITARY SURVEY NO. 2678)**

MAY 30, 2012



C.F. Bird & R.J. Bull, Inc.
2875 W. Dublin-Granville Rd.
Columbus, Ohio 43235