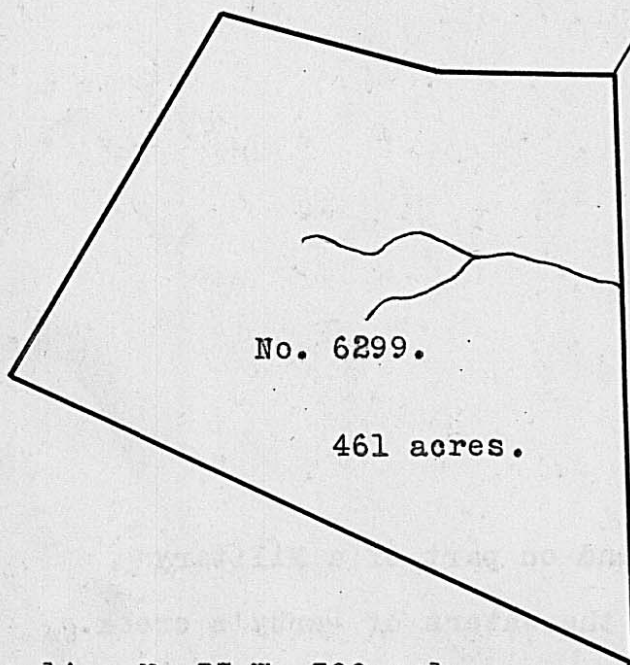


Surveyed for Andrew Poe, assee. 100 acres of land on a Military Warrant No. 5333, on the waters of Deer creek. Beginning at a Hickory and Black Oak, Southwesterly corner to Jesse McKay's Survey No. 5891; thence N. 72 E. 67 poles to a White Oak, corner to said Survey; thence S. 16 E. 108 poles to a Black Oak in the line of said Survey; thence S. 67 W. 49 poles to two Hickories, Northwesterly corner to the Representatives of William Russell's Survey No. 6110; thence West 194 poles to two White Oaks and a Black Oak in the line of said Survey; thence N. 55 E. 175 poles to the beginning.

John Ewing,
William Hall, C.C.
Robert Hall, M.

Cadwallader Wallace, D.S.
June 30th, 1818.
August 25th, 1818.

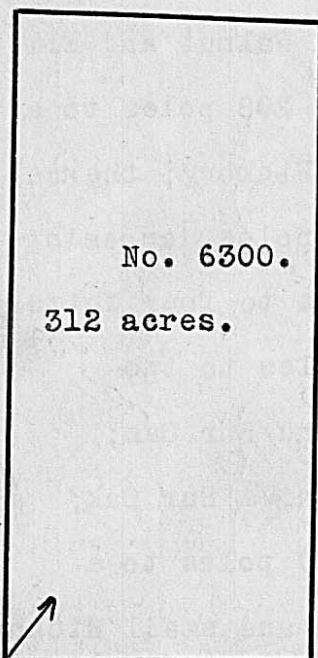
Surveyed for Jesse Gladden, Representative of John Delastations decd. and Isme Bailey,



461 acres of land on two Military Warrants, viz: Gladden 261 acres on No. 5588 and Bailey 200 acres on No. 5580, on the waters of Treacles creek. Beginning at a Black Oak and White Oak in the line of John Gibson's Survey No. 2445, 50 poles S. 37 E. from his westerly corner, running S. 57 W. 100 poles to a forked Black Oak and White Oak; thence S. 70 W. 100 poles to three White Oaks; thence S. 3 E. 220 poles to three White Oaks; thence N. 79 E. 355 poles to two Hickories and a White Oak in the line of said Gibson's Survey; thence with his line N. 37 W. 300 poles, crossing a branch to the beginning.

Thomas Chenowith,
Elijah Chenowith, C.C.
John Sidener, M.

James Galloway, Jur. D.S.
July 22nd, 1809.
July 25th, 1809.



Surveyed for James Galloway, Jr., assee, and Agnes Longo, Representative of Thomas Longo, decd. 312 acres of land on several Military Warrants, viz: Galloway 260 acres, 200 acres on No. 5515, 60 acres on part of No. 5546 and Longo 52 acres on part of No. 5589, on the waters of Treacles creek. Beginning at two White Oaks, an Elm and Black Walnut, lower back corner to Clough Shelton's Survey No. 1410, in the line of Jacob Woolston's Survey No. 2836; running with Shelton's line N. 37 W. 336 poles to a Hickory and two ashes, upper back corner to said Shelton's Survey in the line of John Gibson's Survey No. 2682; thence with Gibson's line and course thereof, N. 53 E. 160 poles to an Ash and Hickory; thence S. 37 E. 336 poles to a Stake in said Woolston's line; thence with said line, S. 53 W. 160 poles to the beginning.

George Sroufe,
George Galloway, C.C.
Balzer King, M.

James Galloway, Jur. D.S.
July 20th, 1809
July 25th, 1809.