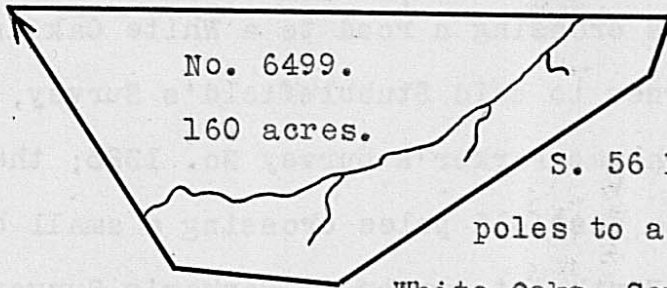


Surveyed for Thomas Worthington, assee. 160 acres of land on part of two Military Warrants 120 acres on No. 4972 and 40 acres on 4859, on the South fork of Bradford's run a branch of Deer creek. Beginning at two Hickories, Northeast corner to said

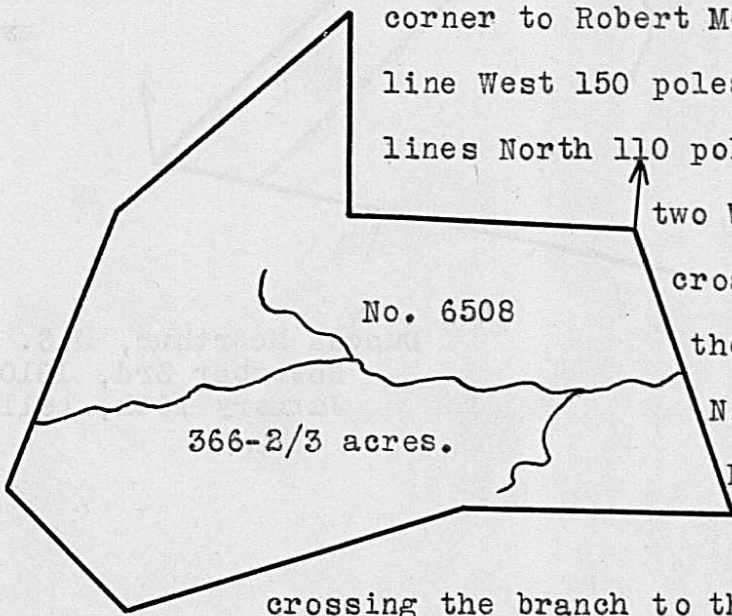


Worthington's Survey No. 4564, running with the lower line of said Survey, S. 3 E. 140 poles crossing the branch to a Black Oak and Hickory, Southeast corner to said Survey; thence S. 56 E. 84 poles to a Black Oak; thence S. 87 E. 194 poles to a White Oak; thence N. 50 E. 32 poles to four White Oaks, Southerly corner to David Bradford's Survey No. 3972; thence with his line N. 65 W. 156 poles crossing the branch to a forked White Oak and Black Oak stump, Southwesterly corner thereof; thence N. 59 W. 154 poles to the beginning.

Isaac Freeman,
William Barbridge, C.C.
Jesse Spencer, M.

Duncan McArthur, D.S.
November 17th, 1809.
December 21st, 1809.

Surveyed for John Moore 366-2/3 acres of land on part of a Military Warrant No. 5160 on the waters of Darby's Creek. Beginning at three Hickories and a White Oak, Southeast



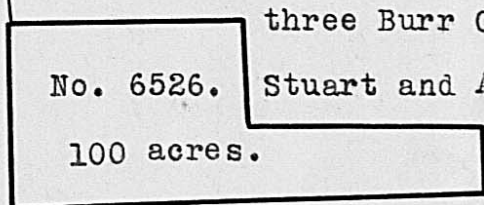
corner to Robert Mean's Survey No. 5097, running with his South line West 150 poles to three Elms; thence with another of his lines North 110 poles to a Stake; thence S. 47 W. 162 poles to two White Oaks and an Elm; thence S. 20 W. 150 poles crossing a branch to two White Oaks; and a Hickory; thence S. 45 E. 82 poles to a Stake; thence N. 72 E. 180 poles to two White Oaks; thence East 144 poles to two White Oaks on the East side of a road; thence N. 20 W. 152 poles crossing the branch to the beginning.

Abijah Cary,
Henry Robey, C.C.
John McDonald, M.

*Patent drawn to Samuel McKee
Record Vol. 88 p. 238*

Duncan McArthur, D.S.
November 20th, 1809.
December 21st, 1809.

Surveyed for James Armstrong, assee. 100 acres of land on a Military Warrant No. 5466, on the waters of Walnut run a branch of Deer creek. Beginning at two Black Oaks, South-west corner to Elias Rector's Survey No. 4518; thence South 95 poles to a Black Oak and Hickory; thence East 245 poles to two Hickories from one root; thence North 35 poles to



three Burr Oaks, two of them from one root, Southeast corner to Stuart and Arbuckle's Survey No. 5673; thence with their line West 120 poles to two Bur Oaks, Southwest corner to said Survey; thence with another of their lines North 60 poles to a Stake in said line, Southeast corner to said Rector's said Survey; thence with his line West 125 poles to the beginning.

David Watson,
Samuel Watson, C.C.
Elias Langham, M.

Benjamin Hough, D.S.
October 21st, 1817.
April 2nd, 1818.