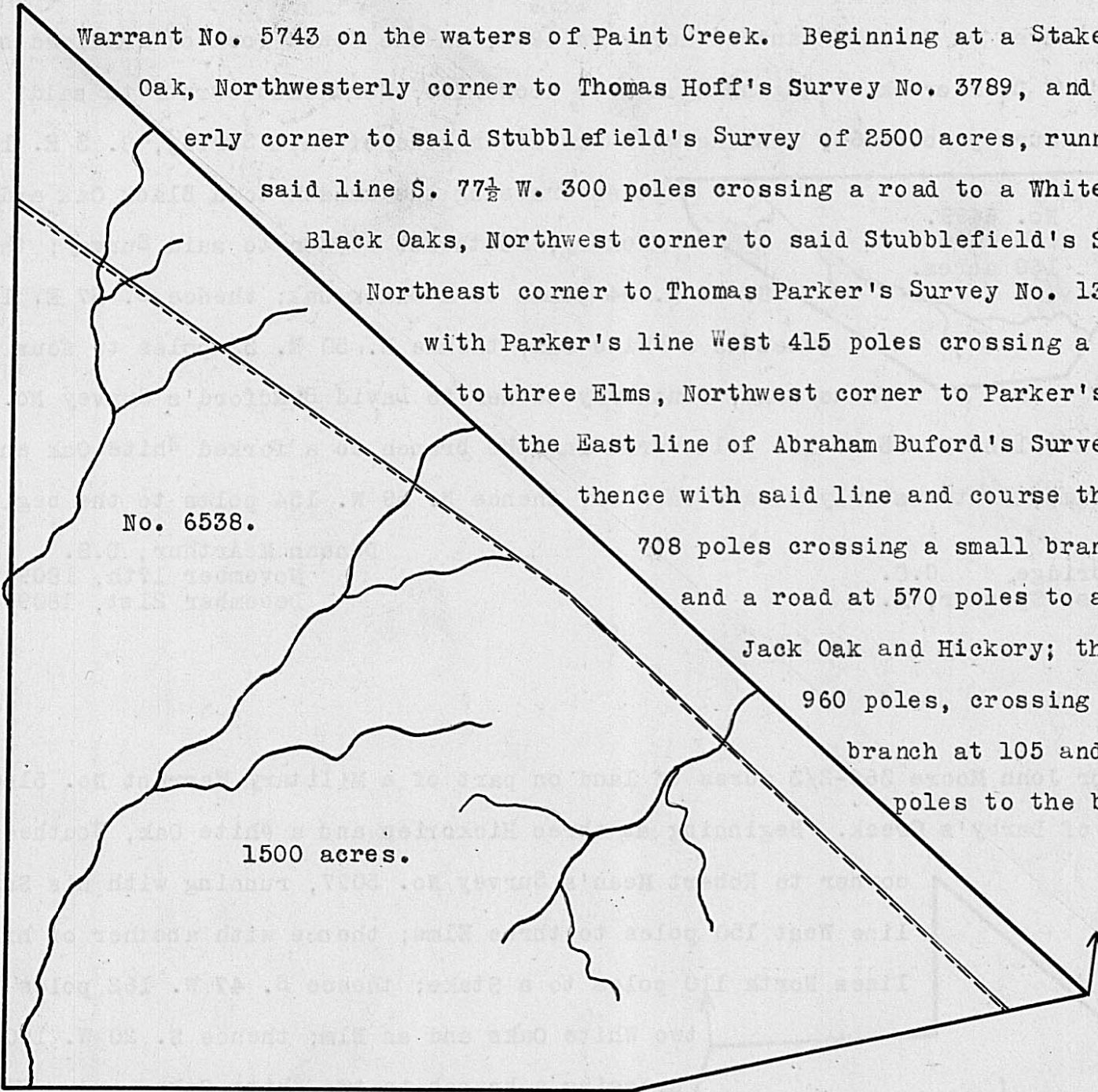


Surveyed for Edward Stubblefield, assee. 1500 acres of land on part of a Military Warrant No. 5743 on the waters of Paint Creek. Beginning at a Stake and White Oak, Northwesterly corner to Thomas Hoff's Survey No. 3789, and Northeasterly corner to said Stubblefield's Survey of 2500 acres, running with said line S. 77½ W. 300 poles crossing a road to a White Oak and two Black Oaks, Northwest corner to said Stubblefield's Survey, and Northeast corner to Thomas Parker's Survey No. 1385; thence with Parker's line West 415 poles crossing a small branch to three Elms, Northwest corner to Parker's Survey, in the East line of Abraham Buford's Survey No. 1093; thence with said line and course thereof North 708 poles crossing a small branch at 350 and a road at 570 poles to a forked Jack Oak and Hickory; thence S. 48 E. 960 poles, crossing a small branch at 105 and one at 700 poles to the beginning.



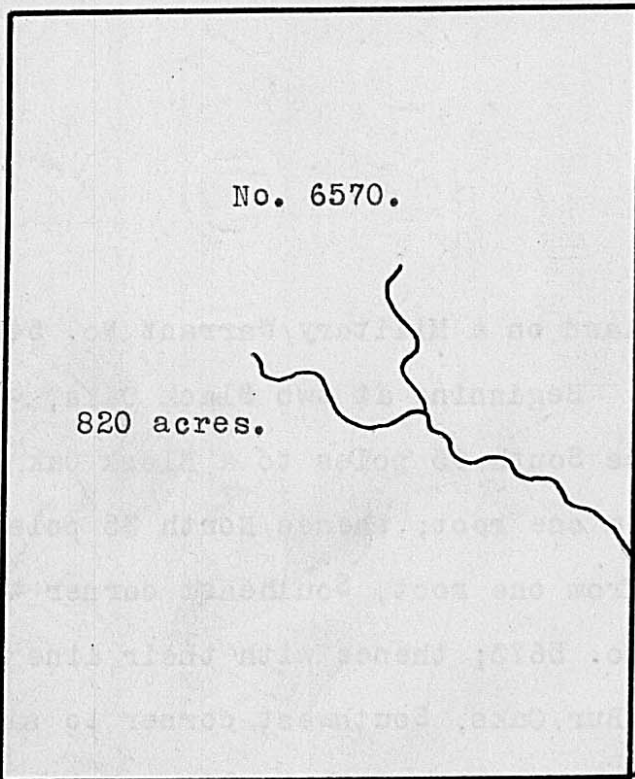
No. 6538.

1500 acres.

Christopher Popsjoy,
 Thomas McDonald, C.C.
 Edward Stubblefield, M.

Duncan McArthur, D.S.
 November 3rd, 1810.
 January 16th, 1811.

Surveyed for William Pelham, 820 acres of land on part of a Military Warrant No. 5662 on the waters of Treacles's creek. Beginning at three White Oaks and two Dogwoods,



No. 6570.

820 acres.

Southerly corner to William Heth's Survey No. 4752, running with his line N. 30 W. 400 poles crossing a branch to two White Oaks and a Hickory in said line; thence S. 60 W. 328 poles to two White Oaks; thence S. 30 E. 400 poles to two Hickories and an Elm; thence N. 60 E. 328 poles to the beginning.

William Townsley,
 David Sroufe, C.C.
 John King, M.

James Galloway, Jur. D.S.
 January 3rd, 1810.
 January 11th, 1810.