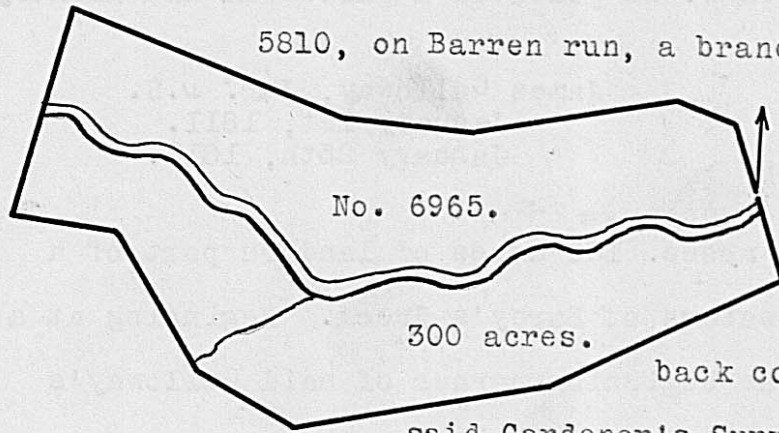


Surveyed for George Hoffman, assee. 200 acres of land on part of a Military Warrant No. 5534, on the waters of Paint Creek. Beginning in the line of William Creighton's Willow Spring tract, at a Post Oak, corner to Joseph Harness' Entry of 1000 acres, running with Creighton's line South 180 poles to a Stake; thence East 178 poles to a Stake in a small prairie; thence North 180 poles to two Post Oaks and a Hickory; thence West 178 poles to the beginning.

Daniel Gambriel,
John Hoffman, C.C.
Elias Langham, M.

Nathl. Massie, D.S.
June 8th, 1812.
July 30th, 1812.

Surveyed for George Dawson, assee. 300 acres of land on part of a Military Warrant No. 5810, on Barren run, a branch of Little Darby's creek. Beginning at a Stake



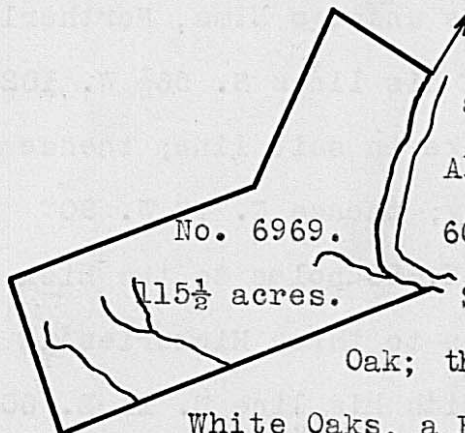
in a prairie, on the bank of the run, where the Westerly line of Caswell Gardner's Survey No. 4940 crosses said run; thence with said line, N. 11 $\frac{1}{2}$ W. 38 poles to three White Oaks, upper back corner to said Survey and in the line of the said Gardner's Survey No. 4939; thence with said line N. 70 W. 32

poles to three Bur Oaks, lower back corner to the said Survey; thence S. 81 W. 111 poles to a large forked White Oak; thence N. 84 W. 58 poles to two Bur Oaks; thence N. 66 W. 162 poles to two Bur Oaks from one root; thence S. 14° 30' W. 105 poles crossing the run at 53 poles to a Bur Oak in a prairie; thence S. 75 E. 54 poles to two Bur Oaks; thence S. 23 E. 74 poles to two Bur Oaks, one of them forked; thence S. 58 E. 63 poles, crossing a branch at 8 poles to two Bur Oaks on the edge of a prairie; thence N. 83 E. 134 poles to two Bur Oaks and a White Oak; thence N. 68 E. 132 poles to a Stake in a prairie, in the line of said Gardner's Survey No. 4940; thence with said line N. 11 $\frac{1}{2}$ W. 50 poles to the beginning.

Abraham Johnston,
William Frack's, C.C.
Nicholas Moore, M.

Walter Dun, D.S.
November 4th, 1813.
February 23rd, 1814.

Surveyed for James Galloway, Jur. assee. 115-1/2 acres of land on part of a Military



Warrant No. 5793 on the lower side of Darby's creek. Beginning at two White Oaks and a Hickory, lower corner on the creek, to Alexander Kerr's Survey No. 5129, running with his line N. 80 W. 60 poles to a Stake in said line; thence S. 5 W. 96 poles to a Stake; thence S. 52 W. 143 poles to two Black Oaks and a Bur Oak; thence S. 38 E. 82 poles, crossing a branch at 36 poles to two White Oaks, a Bur Oak and Hickory, in the line of John Crawford's Survey No.

2681; thence with his line N. 52 E. 200 poles crossing a branch at 56 and one at 104 poles to a White Oak, Elm and Red Oak, upper corner on the creek to said Crawford's Survey; thence up the creek with the meanders thereof, S. 88 W. 20, N. 15 W. 42, North 42, N. 13 E. 36 poles to the beginning.

William Townsley,
William Galloway, C.C.
George Galloway, M.

James Galloway, Jur. D.S.
January 2nd, 1811.
January 25th, 1811.