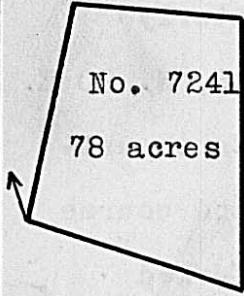


Surveyed for James Johnston 192 acres of land on part of a Military Warrant No. 5792 on the waters of Darby's Creek. Beginning 128 poles S. 74 W. from the Southerly corner of the said Johnston's Survey No. 7239, at two Elms from one root, and a Bur Oak; thence S. 27 W. 204 poles crossing a branch at 90 poles to three Bur Oaks; thence N. 60 W. 154 poles to three forked Bur Oaks on the edge of a prairie; thence N. 27 E. 198 poles, crossing the branch at 100 poles to a Bur Oak on the edge of a prairie; thence S. 62° 40' E. 154 poles to the beginning.

John Folton,  
Mathias Cray, C.C.  
George D. Roberts, M.

W. Dun, D.S.  
August 29th, 1812.  
September 23rd, 1812.

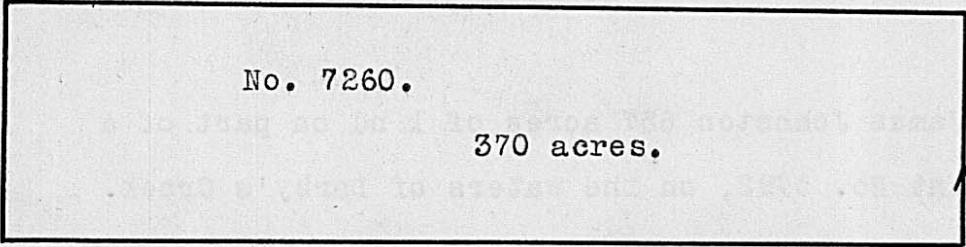
Surveyed for James Johnston 78 acres of land on part of a Military Warrant No. 5792 on the waters of Darby's Creek. Beginning at three Bur Oaks on the edge of a prairie 150 poles S. 53 E. from the Northerly corner of said Johnston's Survey No. 7239; thence N. 25 E. 113 poles crossing a branch to two Bur Oaks from one root; thence S. 75 E. 88 poles to four Bur Oaks; thence S. 14 W. 141 poles, crossing a branch at 80 poles to a Bur Oak; thence N. 60 W. 114 poles to the beginning.



John Folton,  
Mathias Cray, C.C.  
George D. Roberts, M.

W. Dun, D.S.  
August 29th, 1812.  
September 23rd, 1812.

Surveyed for William Creighton, Jur. assee. 370 acres of land on part of a Military Warrant No. 5953 on the waters of Paint Creek. Beginning at three Hickories in the line of David Stephenson's Survey No. 5593, running with his line West 493½ poles to a Stake in a prairie; thence South 120 poles to a Stake in the same prairie; thence East 493½ poles to two Bur Oaks, binding on the barrens; thence North 120 poles to the beginning.

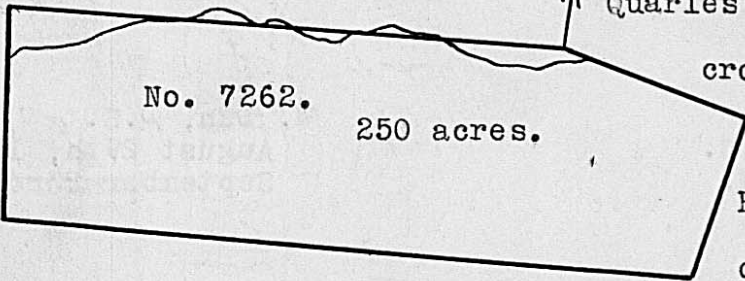


of David Stephenson's Survey No. 5593, running with his line West 493½ poles to a Stake in a prairie; thence South 120 poles to a Stake in

Robert Seward,  
Joseph Davenport, C.C.  
Saml. Timmons, M.

Joseph Kerr, D.S.  
October 2nd, 1813.  
October 15th, 1813.

Surveyed for William Creighton, Jur. assee. 250 acres of land on part of a Military Warrant No. 5953 on the waters of Deer creek. Beginning at two Bur Oaks, West corner to Trunstall Quarles' Survey No. 4086; thence S. 70 E. 100 poles, crossing Walnut Run to two Bur Oaks and a Hickory; thence S. 20 W. 90 poles to three Bur Oaks and a Hickory; thence N. 86 W. 358 poles to two bur oaks and a Hickory; thence North 113 poles, crossing the run to a Stake in the line of Ann Garnett's Survey No. 8005; thence with her line S. 86 E. 293 poles to the beginning.



Perry Timmons,  
Byard Cannon, C.C.  
Patrick McLene, M.

Cadwallader Wallace, D.S.  
October 1st, 1816.  
November 11th, 1816.