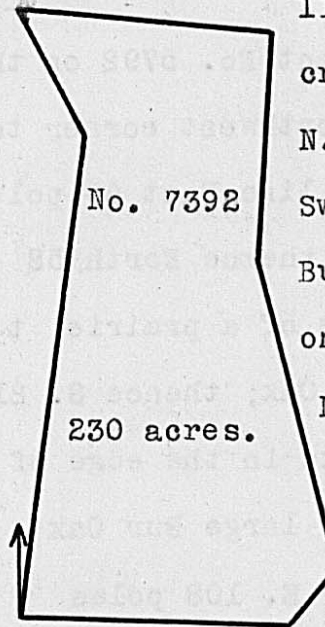


Surveyed for John Graham, and Walter Dun, asees. 226 acres of land on part of two Military Warrants, Graham 176 acres on No. 5791 and Dun 50 acres on No. 5493, on the waters of Treacles' Creek. Beginning at a stake in a prairie 198 poles West from the Westerly corner of James Johnston's Survey No. 7240; thence N. 69 W. 93 poles to two Bur Oaks, upper back corner to Samuel Wallace's Survey No. 2884; thence with his line, S. 52 W. 57 poles to two Elms on the edge of a prairie, lower back corner to John M. Gregory's Survey No. 3153; thence N. 14 W. 192 poles to three Elms and a Honey Locust, the most Southerly corner to Joseph Swearingen's Survey No. 4820, 4945 and 5207; thence with Swearingen's line N. 5 E. 100 poles to a large Hickory, a Red Elm and Small Black Oak in said line; thence East 94 poles to two Bur Oaks from one root on the edge of a prairie; thence S. 30 E. 90 poles to a forked Bur Oak; thence S. 25 E. 11 poles to an Elm and forked Bur Oak; thence S. 7° 30' E. 197 poles to the beginning.

Jonathan Piper,  
John Croy, C.C.  
George D. Roberts, M.

W. Dun, D.S.  
January 10th, 1813.  
July 23rd, 1813.



Surveyed for John Graham, assee. 230 acres of land on part of two Military Warrants, viz 112 acres on No. 5791 and 118 acres on No. 5786, on the waters of Treacles creek. Beginning at a large Hickory, Red Elm and Small Black Oak, N. 5 E. 100 poles from three Elms and a Honey Locust, corner to Joseph Swearingen's Survey No. 4820, 4945 & 5207; thence East 137 poles to two Bur Oaks on the edge of a prairie; thence N. 35 E. 57 poles to two Elms on the edge of a prairie; thence West 13 poles to three Hickories; thence N. 17 W. 145 poles to an Elm in a prairie; thence North 120 poles to a large Bur Oak; thence N. 86° 23' W. 129 poles to four Elms, lower back corner to James Galloway's Survey No. 5743 and corner to Swearingen's aforesaid Survey; thence with his line S. 34 E. 72 poles to a White Oak and Black Oak, corner to said Swearingen's Survey; thence with another of his lines, S. 5 W. 256 poles to the beginning.

Jonathan Piper,  
John Croy, C.C.  
George D. Roberts, M.

v Walter Dun, D.S.  
August 29th, 1812.  
September 22nd, 1812.

Surveyed for James Johnston 181 acres of land on part of a Military Warrant No. 5792, on the waters of Darby's Creek. Beginning at a large Black Oak and two Small Hickories, S. 61 W. 722 poles from the Northwest corner of Robert Mean's Survey No. 5097; thence S. 46 W. 185 poles crossing a branch at 12, and at 140 poles to three Bur Oaks, two of them from one root, on the edge of a prairie; thence N. 50 W. 40 poles to two Bur Oaks; thence N. 15 W. 132 poles to a Hickory and Bur Oak; thence N. 10 E. 77 poles crossing a branch at 12 poles to a Bur Oak on the edge of a prairie; thence East 39 poles to three Bur Oaks from one root; thence S. 71 E. 152 poles to a Stake thence South 50 poles to the beginning.

John Croy,  
Wm. Colgahan, C.C.  
George D. Roberts, M.

W. Dun, D.S.  
August 29th, 1812.  
September 23rd, 1812.

