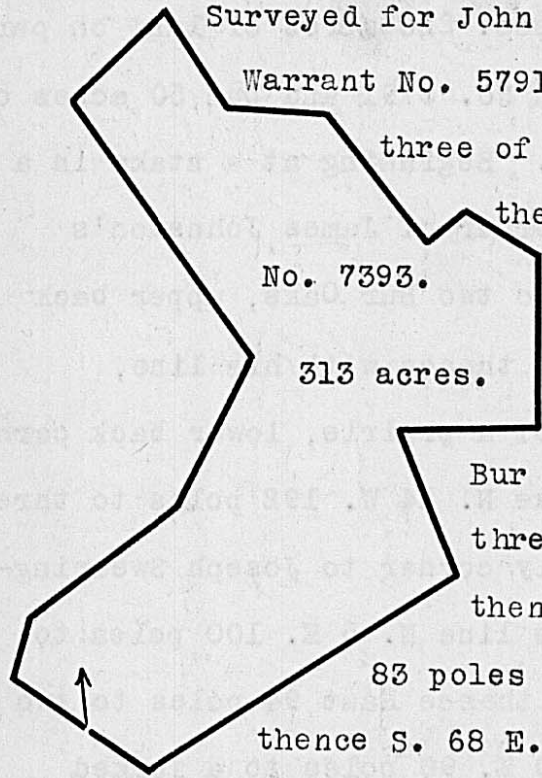


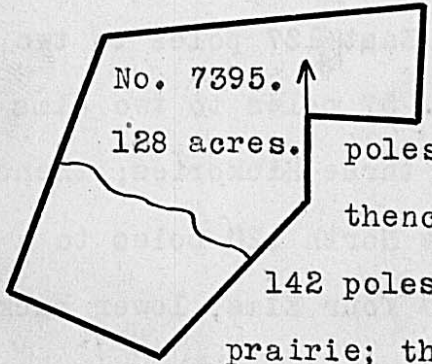
Surveyed for John Graham, assee. 313 acres of land on part of a Military Warrant No. 5791 on the waters of Darby's Creek. Beginning at four Bur Oaks three of them from one root, 120 poles N. 26 E. from a large Bur Oak, the sixth course of said Graham's Survey No. 7392; thence M. 57 W. 40 poles to a Bur Oak and Hickory; thence N. 15 E. 32 poles to three bur oaks; thence N. 52 E. 94 poles to two large Bur Oaks; thence N. 30 E. 84 poles to two Black Oaks and a small Hickory; thence N. 33 W. 164 poles to two Bur Oaks on the edge of a prairie; thence N. 49 E. 68 poles to three Bur Oaks; thence S. 32 E. 56 poles to a forked Bur Oak; thence S. 86 E. 50 poles to a forked Bur Oak; thence S. 37° 30' E. 83 poles to three bur oaks; thence N. 56 E. 24 poles to two Bur Oaks; thence S. 68 E. 42 poles to three Bur Oaks; thence South 90 poles to two Bur Oaks from one root in a prairie; thence S. 87 W. 76 poles to a Jack Oak and Bur Oak; thence S. 25 E. 74 poles to five Bur Oaks from one root; thence S. 58 W. 192 poles to three Black Oaks; two from one root; thence N. 57° 30' W. 40 poles to the beginning.



Jonathan Piper,
John Croy, C.C.
George D. Roberts, M.

W. Dun, D.S.
August 29th, 1812.
September 22nd, 1812.

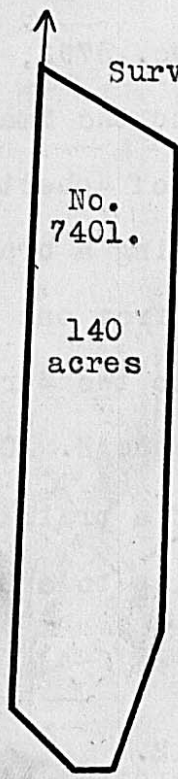
Surveyed for James Johnston 128 acres of land on part of a Military Warrant No. 5792 on the waters of Darby's creek. Beginning at two Hickories and a Black Oak, Northwest corner to Robert Mean's Survey No. 5097; thence with his line East 60 poles to a Jack Oak and forked Bur Oak in said line; thence North 58 poles to two Bur Oaks one of them forked, on the edge of a prairie; thence S. 83 W. 160 poles to two Bur Oaks and a Jack Oak; thence S. 21 W. 142 poles, crossing a branch at 69 poles to three Bur Oaks in the edge of a prairie; thence S. 70 E. 75 poles to a Hickory, Red Oak and large Bur Oak in the line of John Moore's Survey No. 6508; thence with said line N. 47 E. 108 poles crossing a branch at 86 poles to a Stake in the line of said Means' Survey and Northerly corner to Moores; thence with Mean's line, North 50 poles to the beginning.



Jonathan Piper,
George D. Roberts, C.C.
John Croy, M.

W. Dun, D.S.
August 29th, 1812.
September 23rd, 1812.

Surveyed for James Johnston 140 acres of land on part of a Military Warrant No. 5792 on the waters of Treacle's creek. Beginning at two Bur Oaks, upper back corner to Samuel Wallace's Survey No. 2884; thence with the back line of the said Survey, S. 8 E. 338 poles to two Hickories in said line; thence S. 65 E. 36 poles to a Bur Oak and Elm, on the edge of a large prairie; thence East 12 poles to a Stake in the prairie; thence N. 14 E. 75 poles to a Stake in the said prairie; thence N. 8 W. 250 poles to a Stake in the prairie in the line of Graham and Dun's Entry No. 7391; thence with their line N. 69 W. 81 poles to the beginning.



William Chard,
James Chard, C.C.
George D. Roberts, M.

W. Dun, D.S.
August 29th, 1812.
September 23rd, 1812.