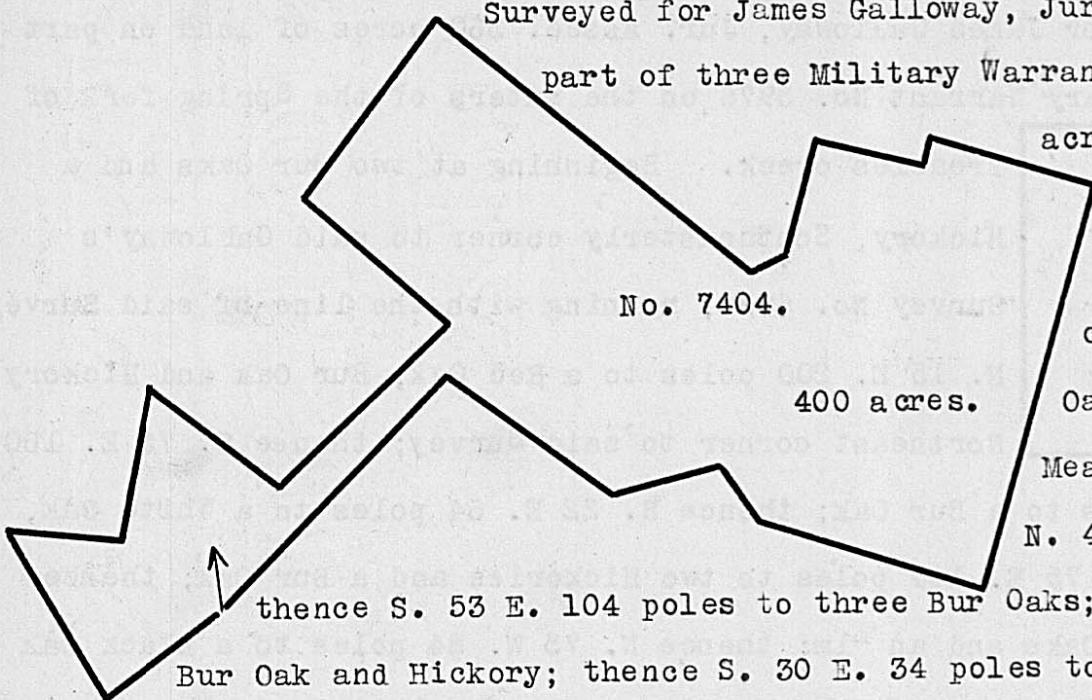


Surveyed for James Galloway, Jur. assee. 400 acres of land on part of three Military Warrants, 60 acres on No. 5974, 300 acres on 5962 and 40 acres on No.

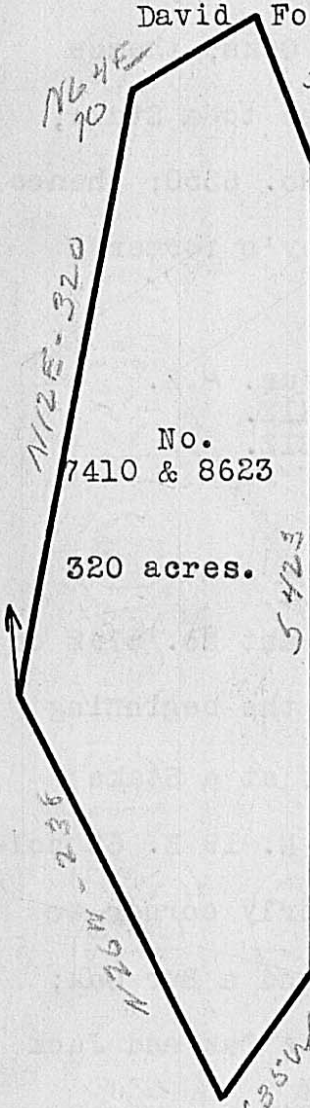


5975 on the waters of Deer creek and the Spring fork of Treacles creek. Beginning at two Black Oaks Northerly corner to Robert Mean's Survey No. 5198, running N. 43 E. 178 poles to two Bur Oaks;

thence S. 53 E. 104 poles to three Bur Oaks; thence N. 75 E. 62 poles to a Bur Oak and Hickory; thence S. 30 E. 34 poles to a Stake; thence S. 74 E. 124 poles to a Stake; thence N. 15 E. 218 poles to a Stake; thence N. 75 W. 90 poles to three White Oaks; thence S. 15 W. 14 poles to a Bur Oak; thence N. 75 W. 58 poles to two White Oaks and a Hickory; thence S. 15 W. 62 poles to two Elms; thence S. 62 W. 16 poles to two White Oaks, one forked; thence N. 53 W. 206 poles to two Bur Oaks; thence S. 37 W. 118 poles to two Bur Oaks from one root; thence S. 53 E. 102 poles to a Stake; thence S. 45 W. 126 poles to a Stake; thence N. 55 W. 86 poles to a Black Ash and White Oak, corner to the Representatives of Nicholas Hobson's Survey No. 6350; thence with his line S. 10 W. 80 poles to four White Oaks from one root, corner to said Hobson's Survey; thence with another of his lines N. 80 W. 60 poles to three Black Oaks, corner to said Hobson's Survey in the line of Thomas Springer's Survey No. 5539; thence with Springer's line S. 30 E. 104 poles to a White Oak, Bur Oak and Hickory, corner to said Springer's Survey in the line of said Mean's Survey; thence with said line N. 51 E. 70 poles to the beginning.

John Pepper,
John Foster, C.C.
David Foster, M.

James Galloway, Jur. D.S.
April 24th, 1812.
April 24th, 1812.



Surveyed for Duncan McArthur, assee. 320 acres of land on part of two Military Warrants, 200 acres on No. 5933 and 120 acres on No. 5718, on the waters of Gladly run, a branch of Deer creek. Beginning at two White Oaks, Northerly corner to Robert Mean's Survey No. 5046, and corner to said McArthur's Survey No. 5195; thence with the line of the last mentioned Survey, N. 12 E. 320 poles to a Hickory, Elm and two large White Oaks; thence N. 64 E. 70 poles to a Stake; thence S. 20 E. 73 poles to two Honey Locusts from one root, and two Elms; thence South 423 poles to three Hickories, Northwesterly corner to said McArthur's Survey No. 6783; thence S. 35 W. 80 poles to a White Oak in the line of said Mean's Survey; thence with said line N. 26 W. 238 poles to the beginning.

Benjamin Melvin,
Charles Melvin, C.C.
John Melvin, M.

Duncan McArthur, D.S.
January 25th, 1816.
January 27th, 1816.