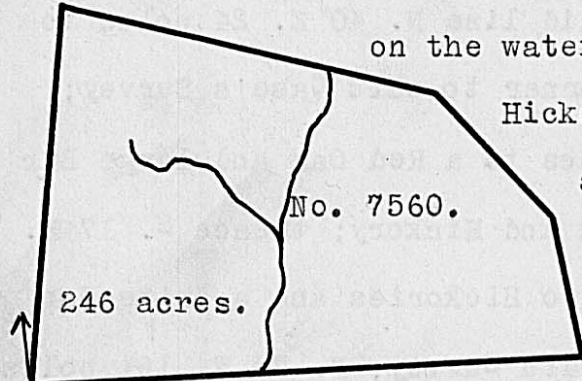


Surveyed for Walter Dun, assee. 70 acres of land on part of a Military Warrant No. 5863 on the lower side of Treacle's creek. Beginning at a White Oak and Hickory, N. 80 E. 80 poles from the lower back corner of James Galloway's Survey No. 5996, in the lower line of the said Survey; thence with the said line N. 80 E. 102 poles to a Red Oak, Bur Oak and forked Sugar tree on the bank of the creek, corner to Galloway's said Survey; thence down the creek and binding thereon, S. 2 E. 25 poles to a Stake on the bank of the creek; thence S. 10 W. 43 poles to a White Walnut and White Oak; thence S. 42 E. 23 poles, crossing a branch at 3 poles to two White Oaks; thence S. 22 E. 68 poles to a Stake in a prairie; thence N. 86 W. 72 poles to a Hickory and Bur Oak; thence N. 38 W. 42 poles, crossing the branch at 24 poles to two hickories and a small Bur Oak; thence N. 22 W. 102 poles to the beginning.

William Lappin,
Henry Johnston, C.C.
James Lappin, M.

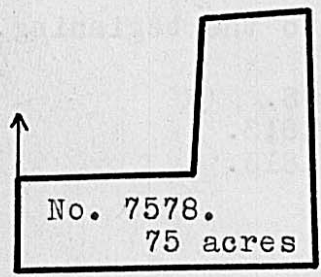
W. Dun, D.S.
August 26th, 1812.
July 23rd, 1813.



Surveyed for John Graham, assee. 246 acres of land on part of a Military Warrant No. 5783 on the waters of Deer creek. Beginning at two Black Oaks and two Hickories, Northerly corner to James McNutt's Survey No. 4751, and Westerly corner to John Baird's Survey No. 6646; thence N. 15 E. 196 poles to a Bur Oak and Hickory; thence S. 70 E. 114 poles to three Bur Oaks; thence S. 61 E. 80 poles to a Bur Oak on the edge of a prairie, S. 34 E. 90 poles to three large Bur Oaks from one root; thence S. 68 poles to a Stake in a prairie; thence N. 83 W. 280 poles passing Baird's Northeasterly corner at 3 poles and with his line crossing a branch to the beginning.

William Lappin,
Henry Johnston, C.C.
James Lappin, M.

W. Dun, D.S.
October 6th, 1812.
July 23rd, 1813.



Surveyed for Joseph and Benjamin W. Ladd, assees. 75 acres of land on part of a Military Warrant No. 5992, on the waters of the North fork of Paint creek. Beginning at a Black Oak and Hickory 102 poles S. 8 W. from Thomas Mallon's cabin now occupied by Andrew Murphy and Southeast corner to Thomas Worthington's Survey No. 5454; thence South 48 poles to a Stake in a prairie; thence East 155 poles to two Bur Oaks in the line of said Worthington's Survey No. 5456, 6824, 7112 & 7612; thence with his line North 128 poles to five White Oaks, corner to said Survey; thence West 58 poles to a Stake in a prairie; northeasterly corner to said "orthington's Survey No. 7113; thence with his line South 80 poles to five "hite Oaks and a Hickory, Southeast corner to said Survey; thence West 96 poles to the beginning.

Thomas Mallon,
Mathew Bonner, C.C.
Silvanus Bourne, M.

Cadwallader Wallace, D.S.
September 6th, 1818.
December 23rd, 1818.