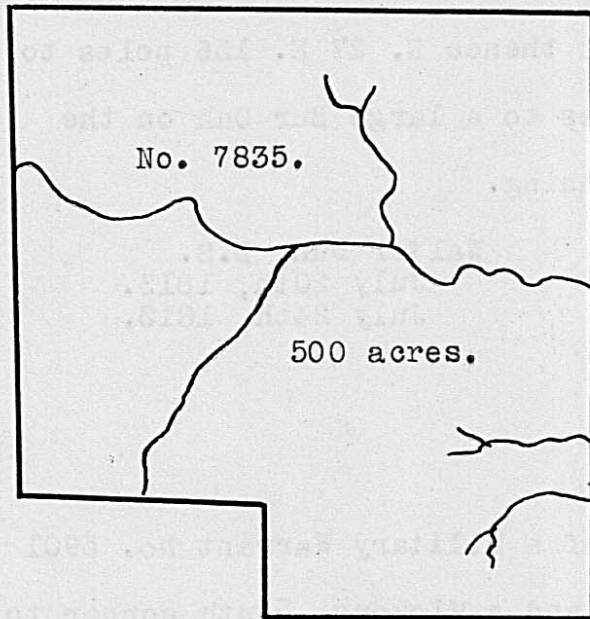


Surveyed for John Graham, assee. 400 acres of land on part of four Military Warrants, 8 acres on No. 5787, 55 acres on 5784, 270 acres on No. 5755 and 67 acres on No. 5791, on the waters of Darby's creek. Beginning at two Hickories and a large Bur Oak in the back line of Robert Kay's Entry No. 4276 of 300 acres, S. 6 W. 194 poles from his upper back corner; thence S. 6 W. 136 poles to a White Oak in a prairie in said line crossing a large branch at 120 poles; thence S. 65 W. 48 poles to a Small Bur Oak in a prairie; thence S. 5 W. 42 poles to a Hickory and forked White Oak; thence S. 46 W. 62 poles crossing a branch at 54 poles to a forked Jack Oak; thence N. 58 W. 258 poles crossing a branch at 10 poles and the run at 180 poles to a Bur; thence N. 24 E. 219 poles crossing a large branch at 196 poles to a Stake in the line of Joseph Chamber's Survey No. 7398; thence with said line S. 39 E. 46 poles crossing the large branch at 29 poles to a White Oak and Jack Oak corner to Chamber's; thence with another of his lines N. 80 E. 88 poles to a Buckeye and two Elms, Southeasterly corner to Chamber's said Survey; thence S. 57 E. 142 poles to the beginning.

John Roberts,
Charles Hanaman, C.C.
James Chard, M.

Walter Dun, D.S.
July 22nd, 1813.
July 23rd, 1813.

Surveyed for Gross Scruggs, assee. 500 acres of land on part of a Military Warrant No. 5916, on the waters of the west fork of Scioto River. Beginning at a Beech, Hickory and



Sugar tree, in the line of the Representatives of Anthony T. Dixon's Survey No. 6953, N. 10 W. 118 poles from their Southwesterly corner and the Northerly corner to the Executors of William Heth's Survey No. 7693; thence with the line of the last mentioned Survey, S. 80 W. 168 poles to a Beech, Hickory and two Sugar trees, another of their corners, and Easterly corner to Henry Bayle's Survey No. 1618; thence with Bayle's line N. 10 W. 57 poles to three Beeches and two Sugar trees, corner to Bayles; thence with another of his lines S. 80 W. 128 poles crossing a small branch to a Hickory, a large Beech and small Ironwood, corner to Bayle's; thence with another of his lines and passing his Northerly corner at 104 poles, N. 10 W. 252 poles crossing a small branch at 165 poles to a Beech and two Red Oaks; thence N. 80 E. 296 poles to a Hornbeam and two Beeches in the line of the Representatives of Dixon's said Survey; thence with said line S. 10 E. 309 poles crossing a branch at 118 poles and a drain at 226 poles, and one at 247 poles to the beginning.

William Meckey,
Franklin Piper, C.C.
Josiah Parrin, M.

Walter Dun, D.S.
July 22nd, 1813.
July 24th, 1813.