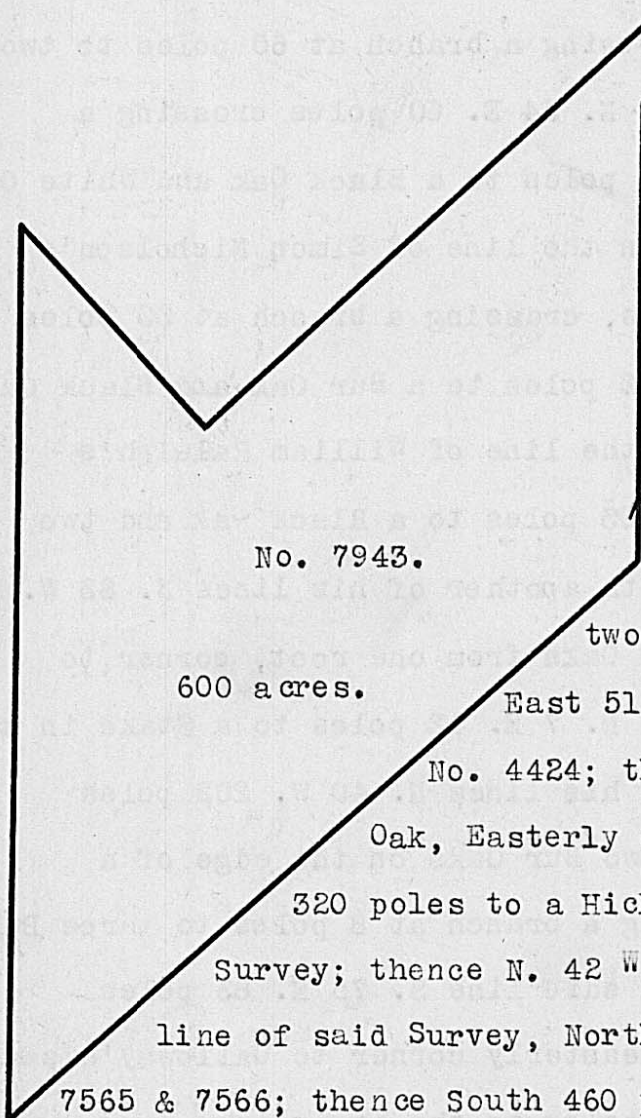


Surveyed for John Graham, assee. 90 acres of land on part of a Military Warrant No. 5791, on the waters of Treacle's creek. Beginning at two Bur Oaks Southeasterly corner to Gross Scrugg's Survey No. 7813; thence N. 21 E. 146 poles to three Bur Oaks; thence S. 77 E. 110 poles to two Hickories and a forked Jack Oak; thence S. 25 W. 148 poles to two Hickories on the edge of a prairie; thence N. 77 W. 102 poles to the beginning.

Enoch Hanaman,
John Steen, C.C.
Robert Frack, M.

Walter Dun, D.S.
May 10th, 1815.
October 11th, 1815.

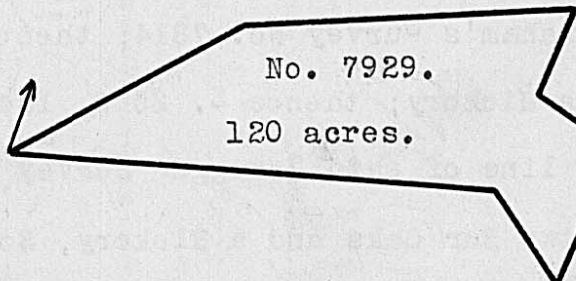


Surveyed for George Hoffman, assee. 600 acres of land on part of two Military Warrants, 500 acres on No. 5534 and 100 acres on No. 5520, on the waters of Deer creek. Beginning at a Hickory and Bur Oak in the West line of the Representatives of Peter Helphenstine's Survey No. 4515, about 90 poles North from the Southwesterly corner to said Survey, Northeasterly corner to Peter Pelham's Survey No. 6384; thence with Helphenstine's line North 238 poles to two Hickories and two White Oaks, Northwesterly corner to said Survey; thence East 51 poles to a Stake in the line of Robert Mean's Survey No. 4424; thence N. 42 W. 58 poles to two "hite Oaks and a Black Oak, Easterly corner to Joel Stoke's Survey No. 4214; thence S. 42 W. 320 poles to a Hickory, Black Oak and Red Oak, Southerly corner to said Survey; thence N. 42 W. 140 poles to two Hickories and a "hite Oak in the line of said Survey, Northeasterly corner to Oliver Simpson's Survey No. 6849, 7565 & 7566; thence South 460 poles passing the Southeasterly corner of Simpson's Survey at 130 poles to a Stake in a prairie, corner to said Pelham's Survey; thence with his line N. 48 E. 432 poles to the beginning.

Robert Soward,
Levin Gibson, C.C.
John Hoffman, M.

Cadwallader Wallace, D.S.
August 1st, 1815.
August 8th, 1815.

Surveyed for John Graham, assee. 120 acres of land on part of a Military Warrant No. 5791 on the waters of Darby's creek. Beginning at two Bur Oaks from one root, Southeasterly corner to Walter Dun's Survey No. 7753; thence with his line N. 34 E. 136 poles to two Bur Oaks in said line; thence N. 59 E. 174 poles to a Bur Oak in the line of James Galloway's Survey No. 7064; thence with said line S. 2 E. 54 poles to three bur Oaks from one root, Southwesterly corner to Galloway's said Survey; thence with another of his lines S. 82 E. 50 poles to a Stake in said line; thence South 71 poles to a Stake in a prairie, Easterly corner to said Graham's Survey No. 7387; thence with said line N. 63 W. 60 poles to five Bur Oaks, Northerly corner to Graham's said Survey; thence with another of his lines S. 64 W. 100 poles to a Bur Oak, Westerly corner to said Graham's Survey; thence S. 69° 30' W. 145 poles to the beginning.



George D. Roberts,
John Roberts, C.C.
Robert Dun, M.

Walter Dun, D.S.
April 29th, 1815.
May 1st, 1815.