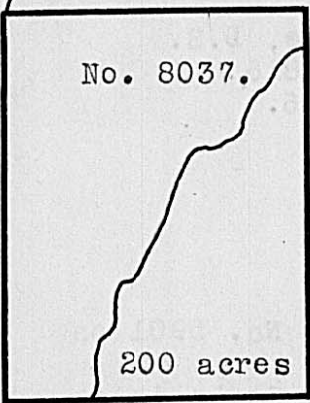


Surveyed for Joseph Bohannon 100 acres of land on a Military Warrant No. 4795 on the waters of Deer creek. Beginning at a Hickory 44 poles S. 65 W. from the Northwesterly corner of Sewell Osgood's Survey No. 8489; Southeasterly corner to William Palmer's Survey No. 8037; thence N. 25 W. 200 poles crossing Duff's fork to a Stake in the edge of a prairie in the line of David Bradford's Survey No. 3971, Northeasterly corner to said Palmer; thence N. 65 E. 80 poles to two Bur Oaks, Northwesterly corner to Philip Snead's Survey No. 8037; thence S. 25 E. 200 poles crossing the fork to two Hickories and a White Oak, Southwesterly corner to said Snead; thence S. 65 W. 80 poles to the beginning.

Jonathan Harris,
Samuel Harris, C.C.
Jonathan Murrain, M.

Cadwallader Wallace, D.S.
September 26th, 1816.
November 18th, 1816.

Surveyed for William Palmer 200 acres of land on a Military Warrant No. 5572, on the waters of Deercreek. Beginning at three White Oaks, Southwesterly corner to David

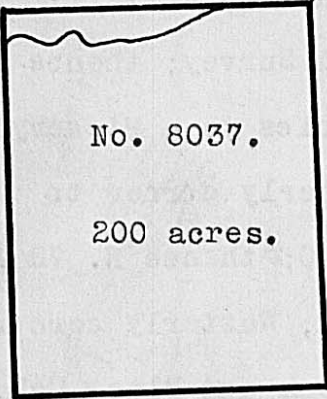


Bradford's Survey No. 3971; thence N. 65 E. 160 poles to a Stake in the edge of a prairie, Northwesterly corner to Joseph Bohannon's Survey No. 8037; thence S. 25 E. 200 poles crossing Duff's fork at 8 poles to a Hickory, Southwesterly corner to said Bohannon; thence S. 65 W. 160 poles crossing the fork at 100 poles to a Stake in a drain; thence N. 25 W. 200 poles to the beginning.

Jonathan Harris,
Samuel Harris, C.C.
Jonathan Murrain, M.

Cadwallader Wallace, D.S.
September 26, 1816.
November 18, 1816.

Surveyed for Philip Snead 200 acres of land on a Military Warrant No. 4794 on the waters of Deer creek. Beginning at two Bur Oaks and a Hickory, Southeasterly corner to David

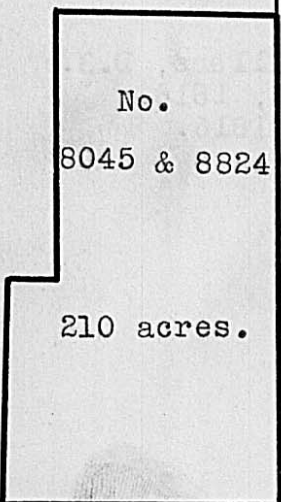


Bradford's Survey No. 3971; thence S. 25 E. 200 poles to four Bur Oaks from one root and two White Oaks, Northeasterly corner to Samuel Osgood's Survey No. 8489; thence S. 65 W. 160 poles to two Hickories and a White Oak, Southeasterly corner to Joseph Bohannon's Survey No. 8037; thence N. 25 W. 200 poles crossing Duff's fork to two Bur Oak, Northeasterly corner to said Bohannon, in the line of Bradford's said Survey; thence N. 65 E. 160 poles crossing the fork to the beginning.

Jonathan Harris,
Samuel Harris, C.C.
Jonathan Murrain, M.

Cadwallader Wallace, D.S.
September 26th, 1816.
November 18th, 1816.

Surveyed for John A. Fulton, assee. 210 acres of land on part of three Military Warrants, 100 acres on No. 6117, 50 acres on No. 6130 and 60 acres on No. 6009, on the waters of the North fork of Paint Creek. Beginning at a forked White Oak, Southeast corner to



Jesse McKee's No. 5899; thence West 115 poles to a Black Oak and Hickory; thence South 140 poles to a Bur Oak; thence West 25 poles to a Stake in a prairie; thence South 117 poles to a Stake in a prairie; thence East 140 poles to a Bur Oak and Hickory, in the line of William Creighton's Survey No. 5468; thence with his line passing his Northwest corner at 100 poles, North 257 poles to the beginning.

Lewis Witherby,
William Vincent, C.C.
William Robinson, M.

David Collins, D.S.
February 26th, 1820.
September 25th, 1820.