

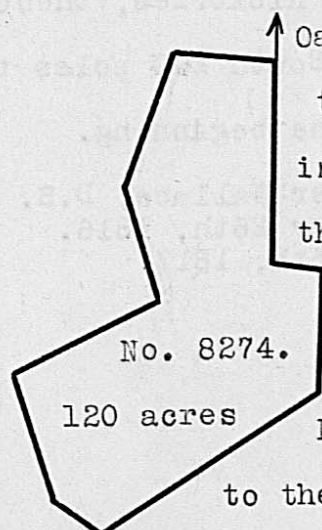
Surveyed for George Greenway 1000 acres of land on a Military Warrant No. 6115, on the waters of Deer creek. Beginning at three small Ashes Southerly corner to Baron Steuben's Survey No. 2698, Northwesterly corner to Churchill Jones' Survey No. 1315 and corner to Benjamin W. Ladd's Survey No. 6432, running with Ladd's line S. 25 W. 102 poles to a White Oak and Hickory, corner to said Survey; thence with another of his lines S. 2 E. 231 poles to a large forked Bur Oak, corner to said Survey; thence with another of his lines S. 35 E. 181 poles to a Stake, corner to said Survey; thence with another of his lines S. 1 W. 280 poles to a Bur Oak, the beginning corner to Ladd's said Survey; and corner to Thomas Worthington's Survey No. 6498; thence with Worthington's line S. 65 W. 85 poles to two White Oaks and fallen Black Oak on said line, and corner to David Bradford's Survey No. 3972; thence with Bradford's line S. 25 E. 220 poles to a Hickory Black Oak and three White Oaks from one root in the line of said Bradford's Survey No. 3971; thence with said line N. 65 E. 240 poles to two White Oaks, Northeasterly corner to said Survey and Northeasterly corner to said northwesterly corner to said Bradford's Survey No. 4108; thence with a line of said Survey N. 55 E. 200 poles to a Black Oak and White

Oak, corner to said Survey and in the line of Thomas Bell's Survey No. 462; thence with Bell's line N. 45 W. 422 poles to a White Oak, corner to said Survey and corner to said Jones' Survey; thence with Jones' line N. 21 W. 500 poles to the beginning.

Jonathan Harris,
Amos Hough, C.C.
Samuel Harris, M.

Benj. Hough, D.S.
August 17th, 1815.
September 2nd, 1815.

Surveyed for James Galloway, Jur. Assee. 120 acres of land on part of a Military Warrant No. 4305 on the head waters of Massie's creek. Beginning at a White Oak, Northwest corner to said Galloway's Survey No. 6488, running South 106 poles to a Hickory, Southwest corner to said Survey; thence with another line of said Survey, East 22 poles to two Bur



Oaks and a Hickory, N.W. corner to Galloway and Russell's Survey No. 6597; thence with their line South 66 poles to three Bur Oaks and two Hickories in said line; thence S. 55 W. 136 poles to a Hickory and forked Bur Oak; thence N. 49 W. 28 poles to a Bur Oak; thence N. 20 W. 66 poles to three pronged Bur Oak; thence N. 61 E. 86 poles to two Hickories and a Bur Oak; thence N. 18 W. 60 poles to three Hickories from one root; thence N. 14 E. 72 poles to three Hickories from one root; thence East 60 poles to the beginning.

Joseph Rowand,
James Hornback, C.C.
John Kelson, M.

James Galloway, Jur. D.S.
November 5th, 1814.
November 8th, 1814.