

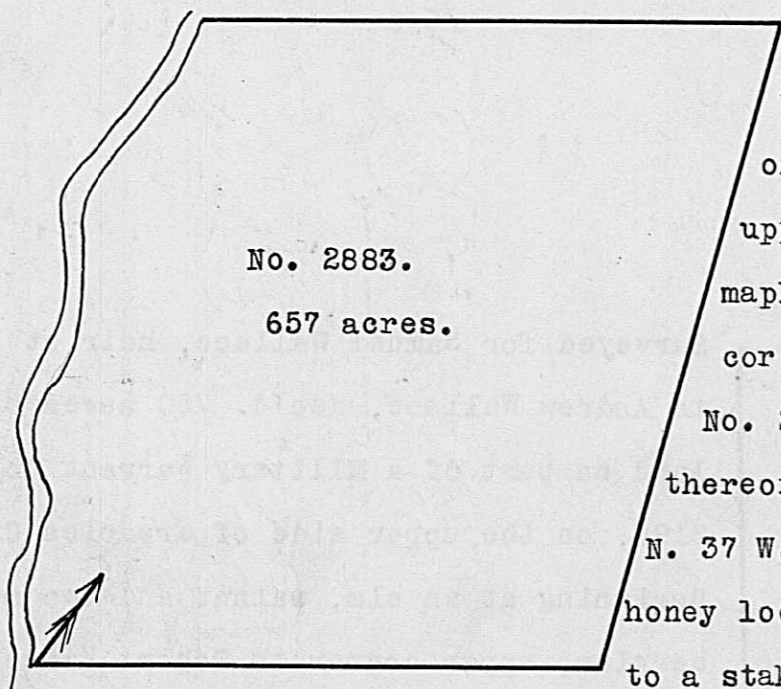
No. 2882.
628 acres.

Surveyed for Samuel Wallace, heir at law to Andrew Wallace dec'd, 628 acres of land on part of a Military Warrant No. 3196 on the upper side of Treacles Creek. Beginning at three white oaks and a red elm, upper corner on the Creek to said Wallace's Survey No. 2881, running up the creek with the meanders thereof N. 35 W. 26, N. 25 E. 40, North 52, N. 30 E. 32, N. 57 W. 78, N. 14 W. 80, N. 54 W. 60, N. 49 W. 30 poles to two maples growing from one root and an elm on the bank of

the Creek; thence N. 53 E. 350 poles to a stake in a prairie; thence S. 21 E. 340 poles to three burr oaks; thence S. 53 W. 350 poles to the beginning.

Aaron Leban,
Thomas Marshall, C.C.
William Wallace, M.

Lucas Sullivant, D.S.
November 12th, 1806.
December 9th, 1806.



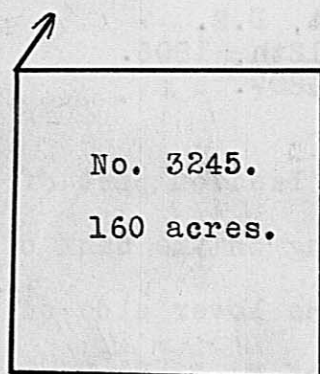
No. 2883.
657 acres.

Surveyed for Samuel Wallace, heir at law to Andrew Wallace, dec'd. 657 acres of land on part of a Military Warrant No. 3196 on the upper side of Treacle's Creek. Beginning at two maples growing from one root and an elm, upper corner on the creek to said Wallace's Survey No. 2882, running up the Creek with the meanders thereof, N. 37 W. 42, N. 14 W. 40, N. 40 W. 72, N. 37 W. 56, North 95, North 18 W. 20 poles to four honey locusts and an elm; thence N. 53 E. 302 poles to a stake in a prairie; thence S. 22 E. 350 poles

to three elms in a point of a prairie; thence S. 53 W. 302 poles to the beginning.

Aaron Leban,
Thomas Marshall, C.C.
William Wallace, M.

Lucas Sullivant, D.S.
November 12th, 1806.
December 9th, 1806.



No. 3245.
160 acres.

Surveyed for Augustine I. Smith, representative of Matthew Smith, dec'd, 160 acres of land on part of a Military Warrant No. 4695, on the waters of Darby's Creek. Beginning at two sugartrees, upper back corner to Charles Simm's Survey No. 1479 and in the line of Robert Means's Survey No. 3743, running with Means's line N. 53 E. 160 poles to two ash's, lower back corner to said Means's Survey; thence S. 37

E. 160 poles to a stake; thence S. 53 W. 160 poles to two elms in the back line of said Simm's Survey; thence with said line N. 37 W. 160 poles to the beginning.

Robert Leloy,
Philip Mothersbough, C.C.
Abraham Ruddle, M.

Lucas Sullivant, D.S.
September 30th, 1799.
October 5th, 1799.