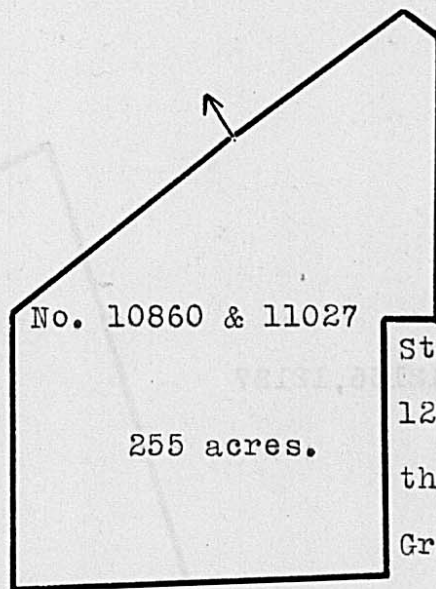


Surveyed for David Chapman, assee. 33-1/3 acres of land on part of a Military Warrant No. 6428, on the waters of Darby's Creek. Beginning at two Bur Oaks from one root, Southwesterly corner of John Graham's Survey No. 7929 and Southeasterly corner to Walter Dun's Survey No. 7753; thence with Graham's line N. 69½ E. 145 poles to a Bur Oak, Westerly corner of said Graham's Survey No. 7387; thence with Graham's line S. 22 E. 60 poles to two Bur Oaks from one root, down another of Graham's corners; thence S. 21 W. 40 poles to three Bur Oaks two from one root (all down) a corner to Survey No. 7432 & 7756; thence with a line of said Survey, N. 81 W. 94 poles to a Stake and Bur Oak, another corner to said Survey; thence with another line of said Survey N. 9 E. 19 poles to a Stake in a prairie, another corner to said Survey; thence with another line of said Survey N. 81 W. 50 poles to the beginning.

Timothy Johnson,  
Joseph D. Hallock, C.C.  
David Chapman, M.

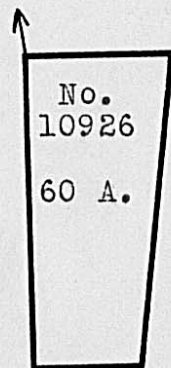
E. P. Kendrick, D.S.  
July 6th, 1829.  
Jan. 26th, 1830.



Surveyed for David Chapman, assee. 255 acres of land on part of two Military Warrants 233 acres on No. 6428 and 22 acres on No. 6489, on the waters of Treacle's Creek. Beginning at two Bur Oaks, Southerly corner to John Graham's Survey No. 7482; thence West 146 poles to two Bur Oaks; thence S. 34 W. 144 poles to a Stake; thence S. 58 E. 192 poles to four Bur Oaks; thence N. 34 E. 129 poles to a Bur Oak; thence S. 59 E. 21 poles to two Bur Oaks; thence N. 39 E. 145 poles to a Hickory and forked Black Oak in Graham's line; thence with said line N. 30 W. 23 poles to a Hickory, Bur Oak and White Oak, corner to said Survey; thence with another of his lines S. 88 W. 104 poles, crossing a branch at 87 poles to the beginning.

Moses Fullington,  
John McLaughlin, C.C.  
John Patrick, M.

Walter Dun, D.S.  
July 9th, 1822.  
July 24th, 1822.



Surveyed for Silvanus Bourne, assee. 60 acres of land on part of a Military Warrant No. 4350, on the waters of Treacle's creek. Beginning at a Stake in a prairie, Northeasterly corner to the Heirs of Nicholas Hobson's Survey No. 6350; thence with their line S. 10 W. 160 poles to a Bur Oak and Hickory, corner to said Survey; thence with another line thereof S. 80 E. 53 poles to four Hickories, corner to said Survey; thence N. 18 E. 161 poles to a Stake in a prairie; thence N. 80 W. 74 poles to the beginning.

William Kirkley,  
John Kirkley, C.C.  
S. Bourne, M.

Cadwallader Wallace, D.S.  
March 25th, 1822.  
August 30th, 1822.