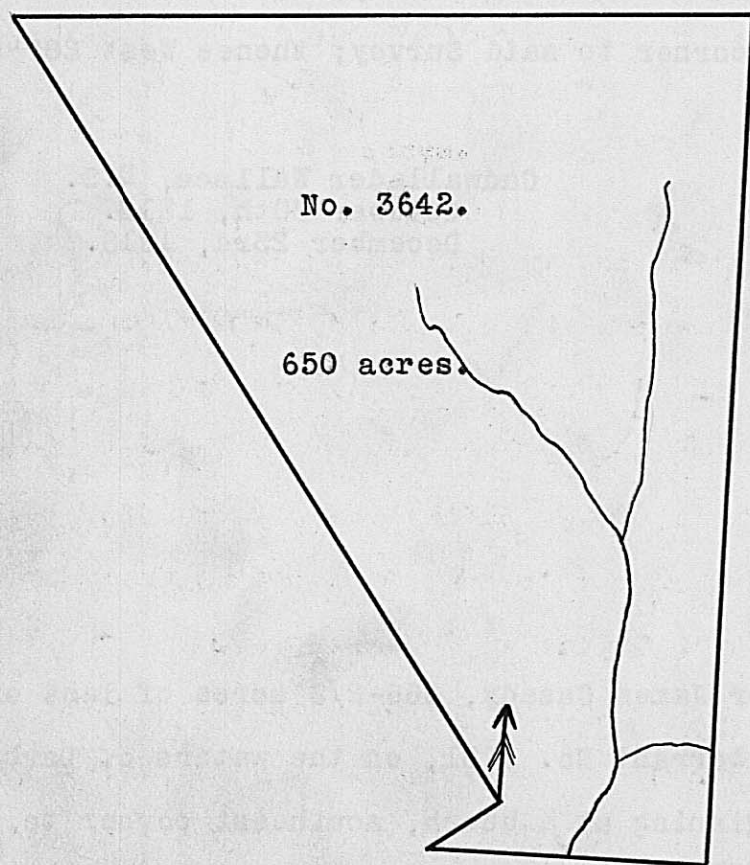


No. 3474
 164 acres.
 "83½ acres of this survey lost and recorded page 416 "E". See page 21 .

Surveyed for Kendall Thomas, assignee of Francis E. Worrell, the only heir of Michael Buck, dec'd., 164 acres of land on a Military Warrant No. 3213 and 64 acres on part of Warrant Warrant/No. 3410, on the waters of Darby's Creek. Beginning at an ash and sugartree, south corner of the representatives of Thomas Sander's Survey No. 3751, 179 poles S. 38 E. from two sugartrees in the line of William Brown's Survey No. 1478, the south corner of John M. Gregory's Survey No. 3679; thence with the line of said representatives, Survey No. 3751, N. 52 E. 179 poles to two elms, east corner to said Survey in the line of Robert Dudley's Survey No. 2599; thence with Dudley's line and the line of Edward Carrington and others, Survey No. 7693, S. 38 E. 147 poles to a hickory and black oak, corner to said Survey No. 7693; thence with the line of William Ayletts Survey No. 6640 and the line of Thomas M. Bayly's Survey No. 5985, S. 52 W. 179 poles to two ashes, east corner to Brown's said Survey No. 1478; thence with a line thereof, N. 38 W. 147 poles to the beginning.

Laban Parks,
 Wray Thomas, C.C.
 John Graham, M.

Nathaniel Massie, D.S.
 January 14th, 1847.
 January 30th, 1847.



Surveyed for William White 650 acres of land on part of a Military Warrant No. 174, on the waters of Paint Creek. Beginning at an elm and three black oaks, east corner to said White's former Survey No. 1277, running S. 55 W. 50 poles to a stake in a prairie, corner to said White's former Survey, and in the line of Clement Reads Survey No. 1293; thence East 150 poles crossing a branch at 70 poles to four large white oaks, northeast corner to Reads Survey, and in the line of Thomas Pemberton's Survey No. 1133; thence with Pemberton's line, passing his northwest corner at 44 poles, North 444 poles crossing a branch at 62 poles to a black oak, hickory, white oak and cherry tree; thence S. 87 W. 385 poles to a stake in a prairie, north corner to said White's former Survey; thence with his former line, S. 35 E. 480 poles to the beginning.

John Egnew,
 David Boak, C.C.
 Joseph Lapsley, M.

William Barlow, D.S.
 July 5th, 1799.
 August 1st, 1799.