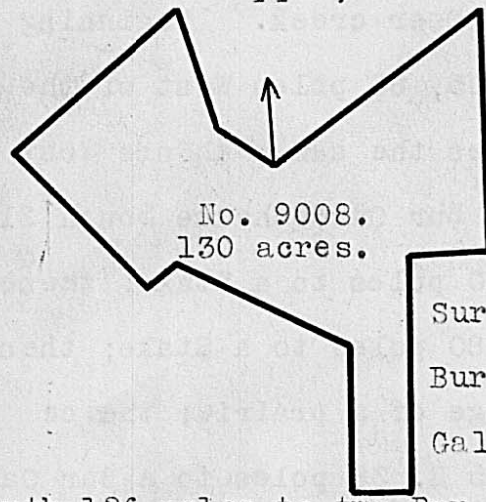


Surveyed for Walter Dun,  
 assee. and Charles Jones  
 347 acres of land on part  
 of three Military Warrants,  
 Dun 80 acres on No. 6126,  
 100-1/3 acres on No. 5887 and

Jones 166-2/3 acres on No. 1451, on Treacle's creek. Beginning at two Ashes a Sugar tree and Hickory on the bank of the creek at the mouth of a branch, upper corner on the creek to James Galloway's Survey No. 6971 ; thence up the creek and binding thereon N. 61 W. 11 poles, N. 35 W. 36 poles, N. 58 1/2 W. 50 poles, crossing a branch at 45 poles, N. 28 W. 22 poles to an Ash on the bank of the creek; thence West 102 poles to two White Oaks and a Hickory; thence N. 55 W. 126 poles to two Black Oaks, a White Oak and small Hickory; thence S. 65 W. 21 poles to two Hickories and a White Oak; thence North 23 poles to a Hickory; thence S. 89 W. 23 poles to a Stake in a small prairie; thence N. 84 W. 49 poles to a Hickory; thence N. 53 W. 74 poles to a large White Oak; thence S. 84 W. 34 poles to two White Oaks corner to said Dun's Survey No. 7535; thence S. 22 E. 68 poles to a Stake in a prairie, Easterly corner to Dun's said Survey; thence N. 86 W. 72 poles to a Hickory and Bur Oak corner of Dun's Survey; thence N. 38 W. 42 poles crossing a branch to two Hickories and a small Bur Oak corner to Dun; thence N. 32 W. 31 poles to three Hickories in the line of Dun's said Survey; thence S. 51 W. 59 poles to a Hickory; thence S. 40 E. 68 poles crossing a branch at 67 poles to a Bur Oak; thence S. 54 E. 81 poles to a Stake in a prairie in the line of Graham and Scrugg's Survey No. 7829; thence East 150 poles to a Bur Oak, their Northeast-erly corner; thence with another of their lines South 35 poles crossing a branch at 4 poles to two Hickories corner to their Survey; thence S. 79 E. 60 poles to two White Oaks from one root; thence S. 58 E. 235 poles crossing a branch at 50, a small branch at 114 a branch at 138 and a drain at 158 poles to three Bur Oaks; thence N. 45 E. 48 poles to a Bur Oak marked W.D. upper back corner to Galloway's said Survey; thence with his upper line, N. 40 E. 74 poles crossing a branch at 40 poles and at 67 poles to the beginning.

Robert Lappin  
 William Lappin, C.C.  
 James Lappin, M.

Walter Dun, D.S.  
 November 13th, 1817.  
 February 25th, 1818.



Surveyed for Joseph and Benjamin W. Ladd and Thomas Norvell,  
 assees. 130 acres of land on part of a Military Warrant No.  
 5880 on the headwaters of Massie's creek. Beginning at a  
 Hickory and forked Bur Oak, Southerly corner to James Galloway's  
 Survey No. 8274; running with his line N. 55 E. 136 poles to three  
 Bur Oaks and two Hickories, corner to his Survey in the line of  
 Galloway and Russell's Survey No. 6597; thence with their line  
 South 126 poles to two Bur Oaks corner to their Survey; thence with another of their lines  
 West 40 poles to a Black Oak and Hickory; thence South 123 poles to a Black Oak and two  
 Hickories; thence West 30 poles to a Stake in a prairie; thence North 78 poles to a Stake;  
 thence N. 64 W. 96 poles to three Hickories; thence S. 39 W. 18 poles to a White Oak and  
 Hickory, Easterly corner to Samuel Lapsley's Survey No. 8227; thence with his line N. 44 W.  
 100 poles to a Stake; thence N. 50 E. 110 poles to a three forked Bur Oak corner to said  
 Galloway's Survey; thence with his line S. 20 E. 66 poles to a Bur Oak, corner to his  
 Survey; thence with another of his lines S. 49 E. 28 poles to the beginning.

John Harpole  
 Samuel Hornback, C.C.  
 Samuel Herrod, M.

James Galloway, Jur. D.S.  
 May 20th, 1817.  
 September 22nd, 1817.