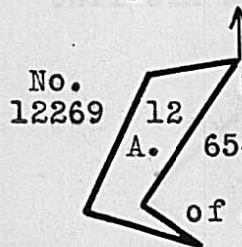


Surveyed for Thomas Lucas, 130 acres of land on part of a Military Warrant No. 6547, on the waters of Darby's Creek. Beginning at a Stake, the Southwest corner to D. Chapman's Survey No. 10793 and Northwest corner to W. Dun's Survey No.

11012; thence S. 14 W. 20 poles to a Stake, Northeast corner to D. Chapman's Survey No. 10987 & 12170; thence N. 79 W. 26 poles to a Bur Oak, another of Chapman's corners in the line of W. Dun's Survey No. 8586 & 8698; thence with Dun's lines N. 11 E. 61 poles to a Stake in a prairie, near five Bur Oaks, 4 from one root; thence N. 79 W. 40 poles to five Bur Oaks; thence N. 10 W. 158½ poles to a Bur Oak on the edge of a prairie; thence N. 31 W. 71 poles to three Bur Oaks, Southwest corner to W. Dun's Survey No. 8783; thence with a line of said Survey N. 84 E. 245 poles to a Stake in said line; thence S. 6 E. 104 poles to a Stake, Northwest corner to W. Dun's Survey No. 8167 and Northeast corner to D. Chapman's Survey No. 10793; thence with the lines of said Survey West 30 poles to a Stake; thence North 58 poles to a Stake; thence West 160 poles to a Stake; thence South 80 poles to a Stake; thence East 67 poles to three Bur Oaks; thence South 168 poles to the beginning.

Frederick Sager,  
Milton Chapman, C.C.  
David Chapman, M.

E. P. Kendrick, D.S.  
February 24th, 1834.  
May 24, 1834.

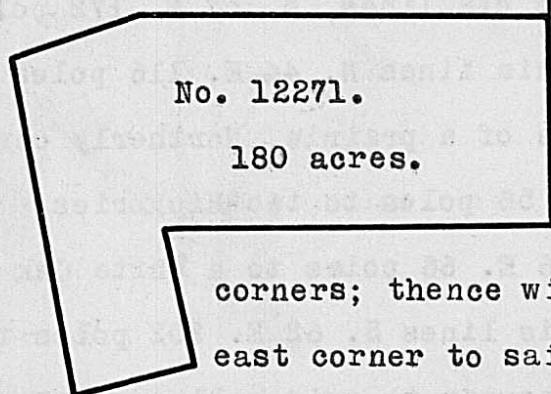


Surveyed for Thomas Lucas, 12 acres of land on part of a Military Warrant No. 6547 on the waters of Darby Creek. Beginning at a Stake in the Northwesterly line of James Galloway's Survey No. 6973, 9 poles S. 37 W. from three Bur Oaks, Northwest corner to said Survey and corner to D. Chapman's Survey No. 10793; thence with Galloway's lines S. 37 W. 93 poles to a Stake in a prairie, corner to Galloway; thence with another of his lines S. 53 E. 38 poles to three Bur Oaks, Northwest corner to James Johnston's Survey No. 7239 and Northeast corner to W. Dun's Survey No. 11012; thence with Dun's line N. 69 W. 62 poles to a Stake, corner to Chapman's said Survey; thence with his lines, N. 30 E. 79 poles to a Stake in a prairie; thence N. 81 E. 46 poles to the beginning.

Frederick Sager  
Milton Chapman, C.C.  
David Chapman, M.

E. P. Kendrick, D.S.  
February 9th, 1834.  
May 24th, 1834.

Surveyed for Thomas Lucas 180 acres of land on part of a Military Warrant No. 6547 on the waters of Darby's Creek. Beginning at a Bur Oak, Southeasterly corner to W. Dun's Survey No. 7752; thence with his line West 203 poles to a Bur Oak, his corner; thence S. 69 W. 72



poles to a Stake from which a bur Oak bears N. 30 W. 15 links, corner to D. Chapman's Survey No. 10982; thence with Chapman's line S. 10 E. 170 poles to a Bur Oak in the line of Nathaniel Haine's Survey No. 7791, another of Chapman's corners; thence with Haine's line N. 76 E. 64 poles to four Bur Oaks, Northeast corner to said Haines Survey, in the line of Graham and Johnson's Survey No. 8540; thence with the lines of said Survey, N. 10 W. 71 poles to a Stake in a prairie; thence East 192 poles to a Stake; thence North 106 poles to the beginning.

John Lock  
Milton Chapman, C.C.  
David Chapman, M.

E. P. Kendrick, D.S.  
February 8th, 1834.  
May 24, 1834.