

No. 12272.

850 acres.

Surveyed for Thomas Lucas

850 acres of land on part of a Military Warrant No. 6547 on

the waters of Treacles Creek and Darby's Creek. Beginning at two

White Oaks and a Hickory, North corn-

er to Robert Vance's Survey No. 1095, East corner to Samuel Wallace's Survey No. 2881 and

North corner to Warner and Kendrick's Survey No.

13661 for 20 acres; thence with the line of Wallace's

said Survey N. 37 W. 130 poles to a Stake in said line,

corner to said Warner and Kendrick's Survey No. 13661 for 60

acres; thence with the line of the last mentioned Survey N. 75 E. 565 poles to a Stake,

corner to said Survey and in the line of Richard C. Anderson's Survey No. 6800; thence with

said line South 72 poles to a Stake, Southwest corner to said Survey No. 6800 and corner to

said Survey No. 13661 for 60 acres; thence with the line of the last mentioned Survey,

S. 13 W. 136 poles to a forked Bur Oak, corner to said Survey and Northwesterly corner to

Walter Dun and others Survey No. 8425; thence S. 52 W. 36 poles to an Elm, corner to said

Survey; thence S. 40 W. 126 poles to a Jack Oak and Bur Oak, corner to said Survey; thence

S. 35 E. 25 poles to a Stake in the line of said Survey; thence S. 47 W. 187 poles to a

Stake in the line of John Graham's Survey No. 7532; thence N. 43 W. 80 poles to three

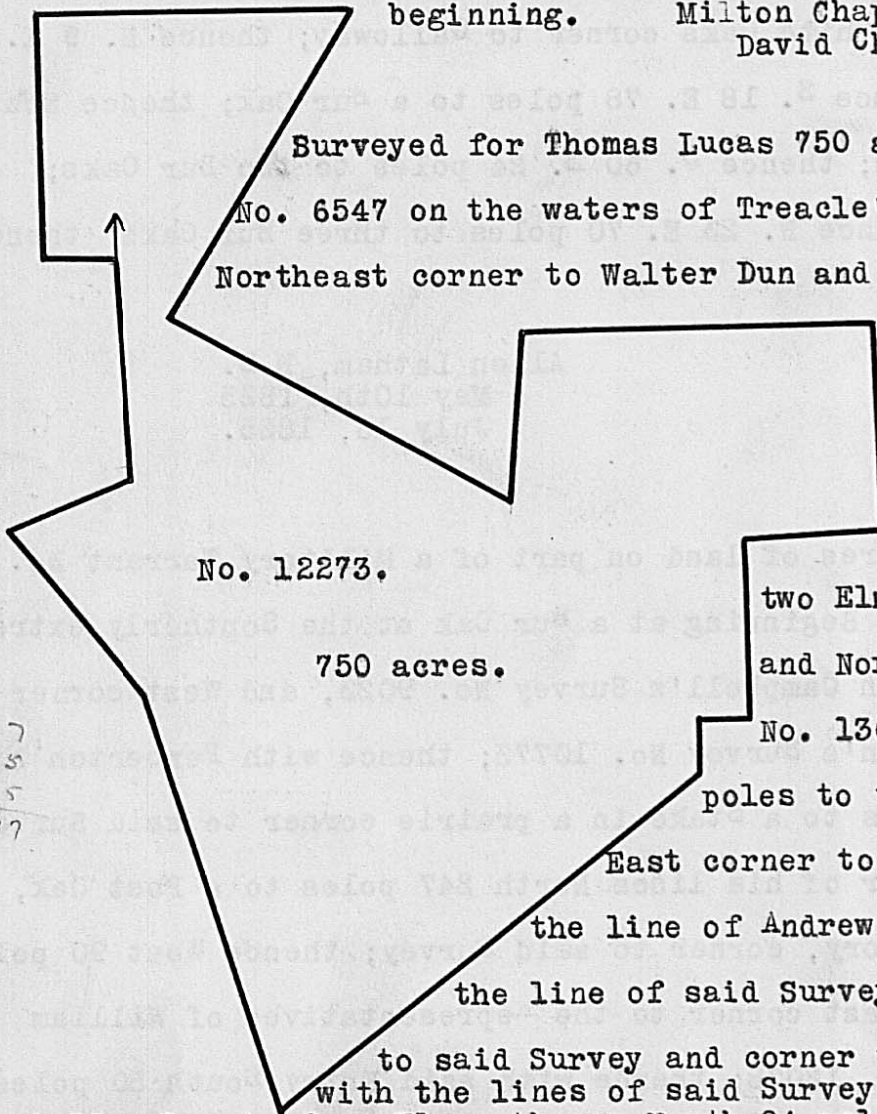
Bur Oaks, Northeast corner to said Survey and Southeast corner to said Survey No. 13661 for

20 acres; thence with the line of the last mentioned Survey, N. 43 W. 195 poles to the

beginning.

Frederick Sagur
Milton Chapman, C.C.
David Chapman, M.

E. P. Kendrick, D.S.
March 14th, 1837
March 17th, 1837.



No. 12273.

750 acres.

Surveyed for Thomas Lucas 750 acres of land on part of a Military Warrant

No. 6547 on the waters of Treacle's and Darby's Creek. Beginning at an Elm Northeast corner to Walter Dun and others Survey No. 8425; thence with the

lines of said Survey S. 2 E. 117 poles to

a Bur Oak, corner to said Survey; thence

S. 72 W. 64 poles to a Stake, corner to

said Survey; thence S. 35 E. 105 poles to

two Elms and a Jack Oak, corner to said Survey,

and North corner to Warner and Kendrick's Survey

No. 13662; thence with their line S. 21 E. 225

poles to three Elms, South corner to said Survey,

East corner to Thomas M. Bayley's Survey No. 6000 and in

the line of Andrew Torborne's Survey No. 2985; thence with

the line of said Survey, N. 53 E. 280 poles to two Elms, corner

to said Survey and corner to James Barnett's Survey No. 7216; thence

with the lines of said Survey N. 4 E. 28 poles to two Bur Oaks; thence

East 25 poles to four Elms; thence North 94 poles to two Hickories and an Elm; thence East

68 poles to three Elms and a Hickory; thence North 105 poles to a Stake in the line of

William Moody's Survey No. 6545; thence West 186 poles to a Stake in the line of Samuel Smith's

Survey No. 10295; thence with the line of said Survey S. 5 W. 85 poles to a Bur Oak, Jack Oak

and Elm, corner to said Survey; thence N. 60 1/2 W. 203 poles to a Red Oak and Hickory, corner

to said Survey; thence N. 32 E. 192 poles to a Bur Oak and Elm, corner to said Survey and

corner to Richard C. Anderson's Survey No. 6800; thence with the line of said Survey West

160 poles to a Stake, Southwest corner to said Survey; thence South 130 poles to a Stake

in the line of said Dun & others Survey No. 8425; thence N. 88 E. 36 poles to the beginning.

Frederick Sagur,
Milton Chapman, C.C.
David Chapman, M.

E. P. Kendrick, D.S.
March 12th, 1837.
March 17th, 1837.

117
105
225
447