

No. 9023.

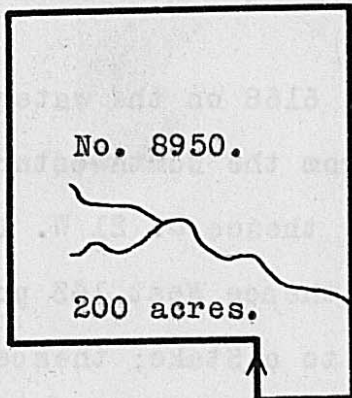
1600 acres.

Surveyed for John Campbell assee. 1600 acres of land on part of a Military Warrant, 376 acres on No. 2274 and on No. 2510 and 1124 acres on part of No. 728 on the Little Miami. Beginning at three Bur Oaks, upper corner on the river to Antrim and Carle's Survey No. 6803; thence with their line S. 35 E. 117 poles passing their Southeast corner at 82 poles to a Stake in a small prairie; thence N. $86\frac{1}{2}$ E. 155 poles to a Jack Oak Northeast corner to John Tamer's Survey No. 7588; thence with Tamer's line passing his Southeast corner at 180 poles, S. 20 E. 326 poles to a Stake; thence East 125 poles to a Stake; thence North $539\frac{1}{2}$ poles to a Stake, Northwest corner to James Galloway's Survey No. ----; thence with his line East 180 poles to three Hickories, Northeast corner to said Survey; thence N. 40 W. 408 poles to the Southern extremity of Ludlow's line on the river; thence down the river and binding thereon S. 26 W. 210, S. 10 E 20, S. 61 W. 140, S. 82 W. 152, S. 41 W. 116, S. 87 W. 60 poles to the beginning.

Hezekiah Davidson
Andrew Davidson, C.C.
John Crawford, M.

David Collins, D.S.
February 19th, 1817.
March 10th, 1817.

Surveyed for the Representatives of William Anderson 200 acres of land on a Military Warrant No. 5517 on the waters of Darby's creek. Beginning at two Black Oaks, the most Southerly corner to the Representatives of Nicholas Hobson's Survey No. 6350, running West 50 poles to a Stake in a prairie; thence North 30 poles to three White Oaks; thence West 128 poles to a White Oak near a small pond, in the edge of a prairie; thence North 172 poles to a Black Oak; thence East 178 poles to three White Oaks and a Black Oak in said Hobson's line; thence with said line, South 202 poles crossing a branch to the beginning.



No. 8950.

200 acres.

William Kirtly
Ezra Kirtly, C.C.
John Cowan, M.

James Galloway, Jur. D.S.
April 16th, 1817.
September 20th, 1817.