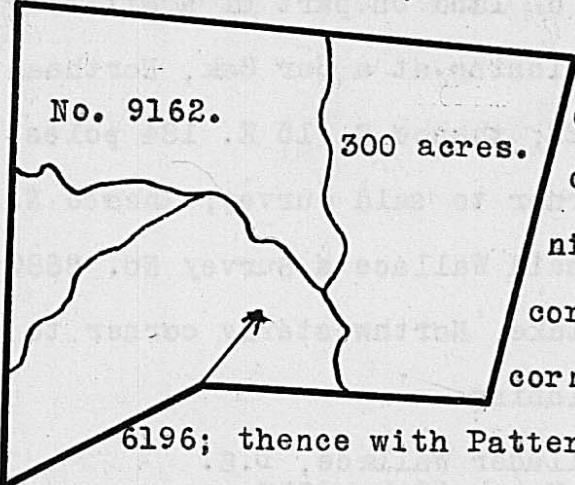


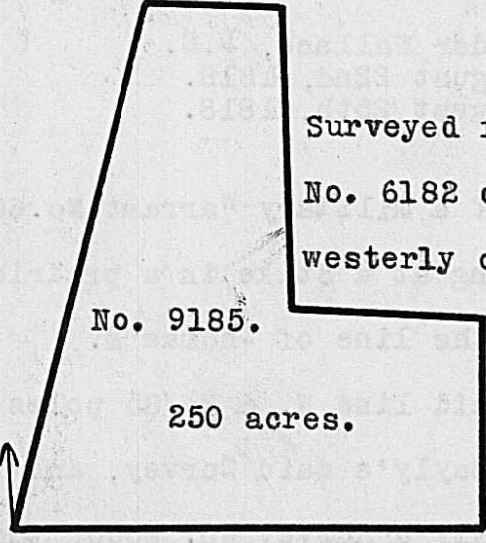
Surveyed for Walter Dun, assee. 300 acres of land on part of four Military Warrants, 50 acres on No. 5749, 51 acres on No. 5718, 62 acres on No. 6098 and 37 acres on No. 6086 and on Warrant No. 6200. on the waters of the Spring fork of Treacle's creek. Beginning at three Bur Oaks, a Jack Oak and a Stake, Westerly corner of John Patterson's Survey No. 5601 and Northerly corner to the Representatives of Thomas Ruffin's Survey No. 6196; thence with Patterson's line N. 55 E. 150 poles passing his Northerly corner at 114 poles crossed a large wet prairie from 55 to 90 poles to three Bur Oaks, two of them from one root on the edge of a prairie; thence N. 26 W. 185 poles to two Bur Oaks and a Hickory in the line of Levi Springer's Survey No. 7946; thence with Springer's line S. 55 W. 292 poles crossing the large wet prairie from 119 to 163 poles to three Bur Oaks one of them forked, a White Oak and Hickory on the edge of a prairie, Southerly corner to Springer's said Survey in the line of the Representatives of Richard Kennon's Survey No. 8176; thence with said line S. 40 E. 243 poles crossing a glady branch at 100 and one at 190 poles to two Hickories, a Bur Oak and White Oak, Easterly corner to said Kennon's said Survey, in the line of Ruffin's said Survey; thence with said line N. 21 E. 108 poles to the beginning.



Trueman Roby
Robert Lappin, C.C.
Abraham Johnston, M.

Walter Dun, D.S.
July 8th, 1817.
February 24th, 1818.

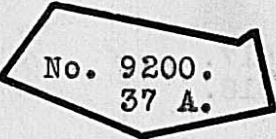
Surveyed for Charles Cutts assee. 250 acres of land on a Military Warrant No. 6182 on the waters of Deer creek. Beginning at four White Oaks, Northwesterly corner to the Representatives of Peter Helphenstine's Survey No. 4514; thence with said line East 245 poles to two Hickories and a White Oak corner to said Survey; thence North 109 poles to two Hickories; thence West 100 poles to a Bur Oak and Hickory; thence North 160 poles to a Stake; thence West 74 poles to a Stake; thence S. 14 W. 278 poles to the beginning.



Thomas Jones
William Crawford, C.C.
George Crawford, M.

David Collins, D.S.
July 30th, 1817.
October 8th, 1817.

Surveyed for Walter Dun assee. 37 acres of land on part of a Military Warrant No. 6064 on the waters of Treacle's creek. Beginning at an Ash and Elm, Northerly corner to James Fitzpatrick's Entry No. 4972; thence North 38 poles to two Elms and a Red Oak, Northwest-erly corner to said Fitzpatrick's Entry No. 4971, in the line of Thomas M. Bayly's Survey No. 6000; thence with said line S. 70 W. 10 poles to a White Oak, Ash and Hickory, corner to Bayly's said Survey; thence with another of his lines N. 64 W. 98 poles to a White Oak, Westerly corner to said Survey in the lower line of Robert Vance's Survey No. 1095; thence with Vance's line S. 53 W. 46 poles to two small Black Walnuts and a Hickory in said line; thence S. 53 E. 79 poles to a Red Oak, Ash, Sugartree and Hickory; thence S. 84 E. 49 poles to a large White Oak and Hickory; thence N. 89 E. 23 poles to the beginning.



Robert Lappin
William Lappin, C.C.
Jacob Lappin, M.

Walter Dun, D.S.
July 4th, 1817.
February 24th, 1818.