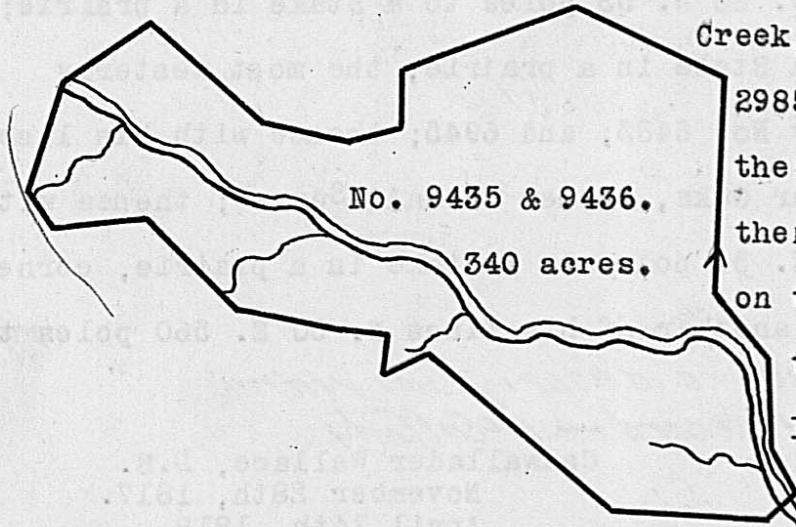

 Surveyed for James Galloway, Jur. assee. 100 acres of land on a Military Warrant No. 6208 on the waters of the Spring fork of Treacle's creek. Beginning at two White Oaks, Southerly corner to William B. Wallace's Survey No. 5064 and corner to said Galloway's Survey No. 5747, running with said Galloway's line N. 85½ E. 116 poles to a Bur Oak corner to his Survey; thence with another of his lines S. 18 E. 160 poles to three White Oaks corner to said Survey; thence S. 68 W. 84 poles to a Stake; thence N. 26 W. 196 poles to the beginning.

David Bradley  
 John Bowen, C.C.  
 Samuel Galloway, M.

James Galloway, Jur. D.S.  
 October 9th, 1817.  
 October 16th, 1817.

Surveyed for George Handy 340 acres of land on part of a Military Warrant No. 5536 on Treacle's Creek. Beginning at a Black Walnut and Blue Ash on the Northeast bank of the Creek, upper corner to Andrew Torborne's Survey No.

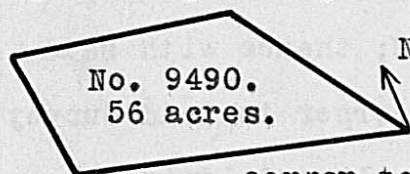


2985; thence down the creek S. 42 E. 46 poles; thence South 43 poles; thence S. 30 E. 26 poles; thence S. 60 W. 16 poles crossing the creek to an Ash on the Southwest bank thereof; thence West 80 poles to two White Oaks and a Hickory; thence N. 53 W. 124 poles to two Black Oaks, a White Oak and small Hickory; thence S. 65 W. 21 poles to two Hickories and a White Oak; thence North 23 poles to a Hickory; thence S. 89 W. 23 poles to a Stake in a prairie; thence N. 84 W. 49 poles to a Hickory; thence N. 42 W. 23 poles crossing a branch to a White Walnut and White Oak; thence N. 10 E. 59 poles to a Red Oak, Black Oak and forked Sugartree, corner to Galloway's Survey; thence N. 46 E. 7 poles crossing the creek to two ashes and three Mulberries, lower corner on the creek to Robert Vance's Survey No. 1095; thence with his lower line N. 53 E. 50 poles to two small Black Walnuts and a Hickory; thence S. 53 E. 79 poles to a Red Oak, Ash, Sugartree and Hickory; thence N. 84 E. 49 poles to a Hickory and a large White Oak; thence N. 89 E. 23 poles to an Ash and Elm; thence North 37 poles to two Elms and a Red Oak in the line of Thomas M. Bayly's Survey No. 6000; thence with his lines N. 70 E. 95 poles to a Red Oak, Ash and Elm; thence S. 70 E. 80 poles to two White Oaks and a Black Oak; thence South 120 poles to the beginning.

Henry Johnson  
 William Lappin, C. C.  
 Benjamin James, M.

Duncan McArthur, D.S.  
 April 10th, 1818.  
 November 23rd, 1818.

Surveyed for Walter Dun, assee. 56 acres of land on part of a Military Warrant No. 6216, on the waters of Gladly run a branch of Deer creek. Beginning at two Bur Oaks on the edge of a prairie, Easterly corner to John Graham and others Survey No. 8524; thence



N. 28 W. 112 poles to four Bur Oaks two of them from one root; thence N. 69 W. 115 poles to four Black Oaks and a Bur Oak, Southeasterly corner to Graham and Scrugg's Survey No. 7829 and corner to Graham and others said Survey; thence with their line South 74 poles to a Stake in a prairie, corner to their said Survey; thence with another of their lines S. 68 E. 173 poles to the beginning.

Ewing McNutt  
 Samuel Ewing, C.C.  
 Ira Wright, M.

Walter Dun, D.S.  
 December 1st, 1817.  
 February 25th, 1818.