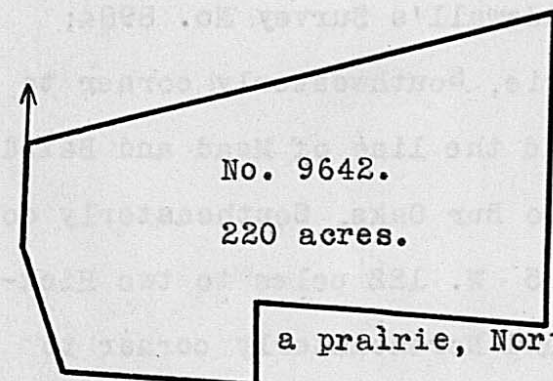


Surveyed for Walter Dun, assee. 380 acres of land on part of a Military Warrant No. 6217 on the waters of Deer creek. Beginning at a Stake corner to said Dun and others Survey No. 8846 in the line of the Representatives of Peter Helphenstine's Survey No. 4387 of 800 acres, 50 poles west from their Northerly corner; thence with the line of Dun and others said Survey, N. 14 W. 375 poles to a Stake in a prairie; their most Westerly corner; thence with another of their lines S. 63 E. 214 poles to a Hickory on the edge of a prairie corner of their said Survey; thence with another line of said Survey N. 15 E. 66 poles to a White Oak and Hickory, corner to said Survey; thence with another of their lines N. 43 W. 129 poles crossing a branch to a Stake in a prairie, corner to their Survey; thence with another of their lines N. 60 W. 100 poles to two White Oaks, corner to their Survey; thence S. 20 W. 491 poles to three Elms marked W. in the line of Helphenstine's said Survey; thence with said line East 221 poles to the beginning.

Andrew Gubberaly  
John Moore, C.C.  
Cadwallader Wallace, M.

Walter Dun, D.S.  
November 24th, 1817.  
February 21st, 1818.

Surveyed for Joseph and Benjamin W. Ladd and Thomas Norvell, assees. 220 acres of land on part of a Military Warrant No. 5798 on the waters of the North fork of Paint creek. Beginning at a Black Oak, White Oak and Hickory, Southerly corner to John A. Fulton's

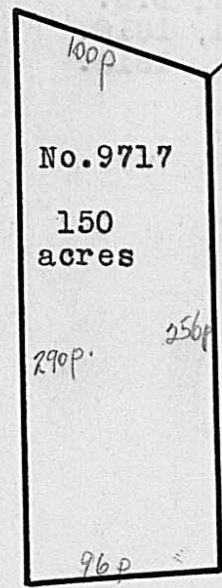


Survey No. 7948 and 7997, in the East line of William Creighton's Survey No. 5468; thence with Fulton's line N. 72 E. 286 poles to a Stake in said line; thence South 159 poles to a Stake in the line of William McKee's Survey No. 5900; thence with his line West 147 poles to a Stake in a prairie, Northwesterly corner to his Survey; thence South 40 poles to a Stake in a prairie, corner to said Survey in the line of said McKee's Survey No. 5220; thence with said line West 92 poles to a White Oak and Black Oak, Easterly corner to William Robinson's Survey No. 6386; thence with his line N. 22 W. 72 poles to two Bur Oaks his Northeasterly corner and Southeasterly corner to Creighton's said Survey; thence with his line North 33 poles to the beginning.

James McMallen  
Joseph McMallen, C.C.  
William Lewis, M.

Cadwallader Wallace, D.S.  
August 22nd, 1818.  
August 25th, 1818.

Surveyed for George Dawson, assee. 150 acres of land on part of a Military Warrant No. 6034, on the waters of Deer creek. Beginning at a White Oak and Hickory near the edge



of a prairie, Easterly corner to Nathaniel Pendleton's Survey No. 7418; thence with said line S. 60 W. 100 poles to two White Oaks and two Hickories, Northerly corner to Benjamin Grun's Survey No. 6286; thence with Grun's line S. 48½ E. 290 poles to a Bur Oak and Hickory; thence N. 40 E. 96 poles to a Stake; thence N. 48 W. 256 poles to the beginning.

Shuler McDonald  
James McArthur, C.C.  
Bartholamy Melvin, M.

Duncan McArthur, D.S.  
November 2nd, 1818.  
November 24th, 1818.