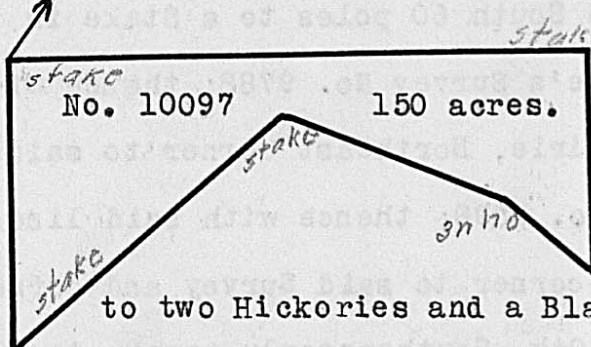


Surveyed for Peter Vandevanter, assee. 200 acres of land on a Military Warrant No. 2747 on the waters of Paint Creek. Beginning at two Hickories and an Elm, Northwest corner to Robert Jones' Survey No. 1341, running with his line East 200 poles to a Stake in a prairie, Northeast corner to said Jones' Survey; thence North 160 poles to a Stake in a prairie, Southwest corner to Miles Jennings' Survey No. 540; thence West 200 poles to a Stake; thence South 160 poles to the Beginning.

Jeremiah Linson  
Peter Vandevanter, C.C.  
Cornelius Vandevanter, M.

James Galloway, Jur. D.S.  
October 16th, 1819.  
October 20th, 1819.

Surveyed for James Galloway, Jur. assee. 150 acres of land on part of a Military Warrant No. 5812 on the waters of the Little Miami. Beginning at a Stake in a prairie, Southerly corner to Sarah Easton's Survey No. 9226, in the line of the Representatives of John

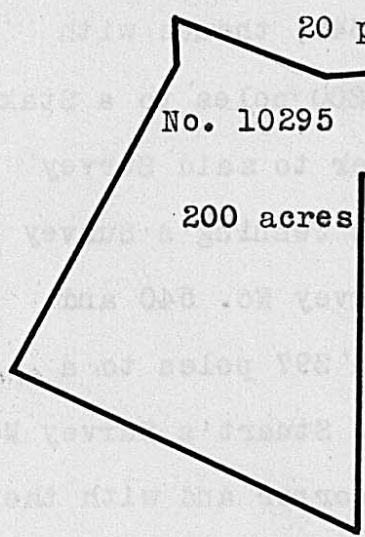


Robin's Survey No. 4888, running with Easton's line N. 55 E. 300 poles to a Stake in a prairie, Easterly corner to her Survey in the line of William White's Survey No. 3642; thence with said White's line S. 35 E. 110 poles to two Hickories and a Black Oak corner to Galloway and Band's Survey No. 5717, and 5725; thence with their line N. 87 W. 60 poles to three White Oaks corner to said Survey; thence with another of their lines S. 75 W. 120 poles to a Stake in a prairie, corner to said Survey; thence with another of their lines S. 15 W. 180 poles to a Stake in said Robin's line; thence with said line N. 35 W. 146 poles to the beginning.

John Ray  
Robert Ray, C.C.  
Lot Bozarth, M.

James Galloway, Jur. D.S.  
December 2nd, 1819.  
February 24th, 1820.

Surveyed for Samuel Smith assee. 200 acres of land on a Military Warrant No. 6175 on the waters of Deer creek. Beginning at three White Oaks, Southeasterly corner to James Galloway's Survey No. 5744, in the line of George Mathew's Survey No. 5749; thence with Galloway's line West 150 poles to an Elm and Bur Oak another of Galloway's corners; thence with another of his lines N. 62 W. 84 poles to three Elms another of his corners in the line of Richard C. Anderson's Survey No. 6800; thence with Anderson's line, South



20 poles to an Elm and Bur Oak, Southeast corner to Anderson's said Survey; thence S. 32 W. 180 poles to a Red Oak and Hickory; thence S. 60° 30' E. 191 poles to a Bur Oak, a Jack Oak and Elm; thence N. 5 E. 180 poles to a Stake; thence East 139 poles to a Stake in the line of William Moody's Survey No. 6545; thence with said line and the line of said Mathew's Survey, North 50 poles to the beginning.

Henry Patterson  
Hiram Bradley, C.C.  
Thomas Clark, M.

Walter Dun, D.S.  
May 28th, 1820.  
July 17th, 1820.