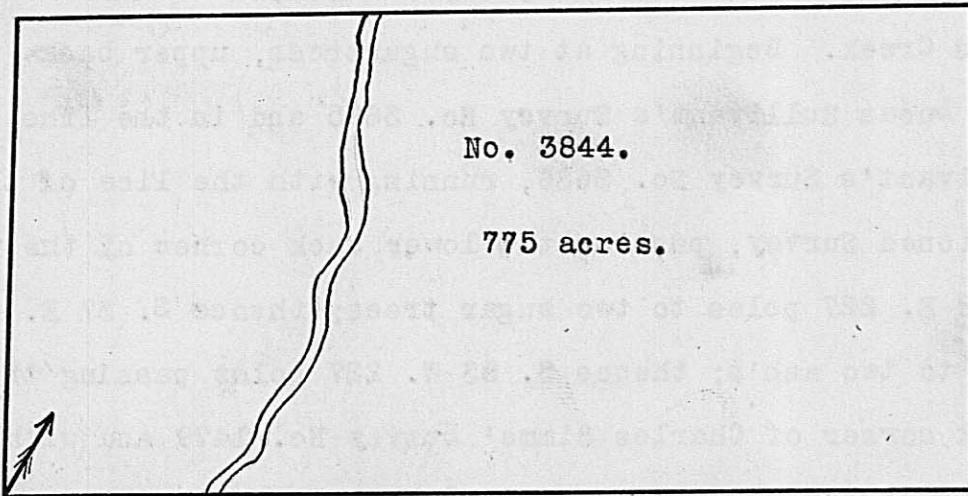


No. 3876.
100 acres.

Surveyed for George McCredie, assignee, 100 acres of land on a Military Warrant No. 4811, on the waters of Darby's Creek. Beginning at two elms, southwest corner to Augustine I. Smith's Survey No. 3245, in the line of Charles Simms' Survey No. 1479, running with Simms' line S. 37 E. 100 poles to two sugartrees; thence N. 53 E. 160 poles to a hickory and sugartree; thence N. 37 W. 100 poles to a stake, southeast corner to said Simms; thence S. 53 W. 160 poles with Simms' line to the beginning.

Philip Mothersbough,
Robert Liloy, C.C.
Abraham, Rudle, M.

Lucas Sullivant, D.S.
July 1st, 1801.
August 14th, 1801.

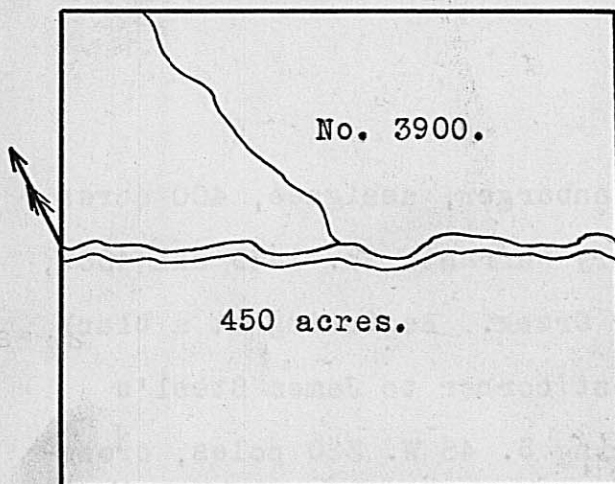


Surveyed for James McNutt, 775 acres of land on part of a Military Warrant No. 4878, on Deer Creek. Beginning at two hickories, northerly corner to William Evans' Survey No. 4121, running N. 26 W. 248 poles to two ashes and a hickory, southwest corner to James

Galloway's jun's Surveys No. 6029 & 6302; thence with Galloway's line, N. 64 E. 500 poles crossing Deer Creek at 174 poles to two elms and a forked hickory, southeast corner to said Galloway's Survey; thence S. 26 E. 248 poles to an ash and hickory; thence S. 64 W. 500 poles passing said Evans's corner at 296 poles and with his line crossing the Creek at 426 poles and a bend of the Creek at 446 poles to the beginning.

Samuel Galloway,
George Galloway, C.C.
William Townsley, M.

James Galloway, jr. D.S.
June 28th, 1810.
March 9th, 1811.



Surveyed for the representatives of Mathew Arbuckle, dec'd., 450 acres of land on part of a Military Warrant No. 4931, on Deer Creek. Beginning at a black walnut and a cherry tree on the southeast bank of the Creek, 200 poles below where the lower line of James Steel's Survey No. 3725 crosses the Creek, running S. 23 W. 125 poles to three white oaks from one root; thence S. 67 E. 288 poles to a stake; thence N. 23 E. 250 poles crossing the Creek to a stake; thence N. 67 W. 288 poles crossing a branch to a forked white oak and forked elm; thence S. 23 W. 125 poles crossing the Creek to the beginning.

Frederick Zimmerman,
Joseph Bowman, C.C.
Isaac M. Riley, M.

Duncan McArthur, D.S.
May 9th, 1801.
February 24th, 1802.