

Surveyed for Samuel H. Saunders assee. 428-1/3 acres of land on on part of two Military Warrants viz 381-2/3 acres on No. 6658 and 46-2/3 acres on No. 6649 on the waters of Deer creek. Beginning at two large White Oaks and a small Hickory, Northwest corner to Cadwallader Wallace's Survey No. 9473; thence N. 46 E. 220 poles to three Elms Northeast corner to said Survey; thence North 12 poles to two Hickories and a White Oak; thence N. 45 W. 538 poles to two White Oaks, Southeast corner to Richard Preddy's Survey No. 4481; thence S. 48 W. 106 poles to two White Oaks, Northeasterly corner to Richard Apperson's Survey No. 6288; thence S. 42 E. 136 poles to a Bur Oak and Hickory, corner to said Survey; thence S. 48 W. 20 poles to a Hickory and White Oak corner to said Survey; thence S. 10 E. 75 poles to two Hickories and a Bur Oak corner to said Survey; thence S. 42 E. 150 poles to a Stake in the line of said Survey and in the line of Joseph Harness' Survey No. 5531 of 280 acres; thence N. 48 E. 30 poles to a Stake East corner to said Survey; thence S. 30 E. 223 poles to the

beginning.

Philip Asbury
Francis Asbury, C.C.
Saml. H. Saunders, M.

E. P. Kendrick, D.S.
April 12th, 1837.
April 13th, 1837.

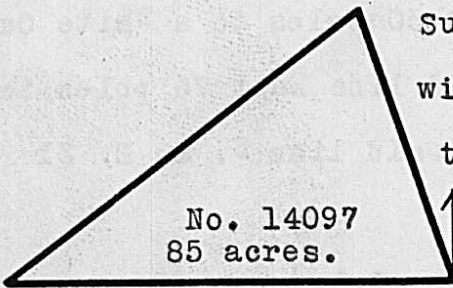


Surveyed for Henry Warner assee. 10 acres of land on part of a Military Warrant No. 6645 on the waters of Deer Creek. Beginning at an Elm, Jack Oak and Bur Oak, Northeast corner to James McNutt's Survey No. 4193, Northwest corner to Robert Mean's Survey No. 5637 and Southwest corner to Cadwallader Wallace's Survey No. 6286; thence with the line of said Survey N. 23 W. 400 poles to an Elm and two Hickories, Northwest corner to said Survey; thence S. 60 W. 9 1/2 poles to a Stake, corner of Nathaniel Pendleton's Survey No. 7418; thence with the line of said Survey S. 26 E. 400 poles to the beginning.

John Lewis
Francis Rowe, C.C.
Henry Warner, M.

E. P. Kendrick, D.S.
July 4th, 1840.
July 25th, 1840.

Surveyed for James Taylor, Jur. assee. 85 acres of land on part of a Military Warrant (exchanged) No. 432, on the waters of Deer creek. Beginning at nine Aspens in the line of Harden and Gray's Survey No. 280 and corner to Woodford & Apperson's Survey No. 6260 of 550 acres; thence with their line N. 19 W. 145 poles to two Hickories, corner to said



Survey in the line of Richard Apperson's Survey No. 5433; thence with said line S. 53 W. 225 poles to three Elms, Southeast corner to Barron Stuben's Survey No. 2698; thence with the line of Hardin and Gray's said Survey East 225 poles to the beginning.

Henry Warner
Elias Warner, C.C.
Iared S. Dawson, M.

E. P. Kendrick, D.S.
September 12th, 1838.
September 14th, 1838.