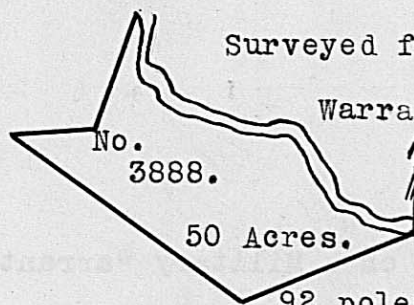


Surveyed for David Bradford, assignee, 1000 acres of land on part of a Military Warrant No. 3974 on a branch of Deer Creek. Beginning at three white oaks, southwardly corner to said Bradford's Survey No. 3971, running with the line of said Bradford's Survey, N. 25 W. 320 poles crossing the branch at 165 poles to four white oaks on the bank of the Branch; thence with another of his lines N. 65 E. 160 poles to a hickory, black oak and three white oaks from one root; thence N. 25 W. 220 poles to two white oaks and a black oak; thence S. 65 W. 150 poles crossing the branch at 20 poles to a stake; thence S. 13 E. 508 poles to a black oak and forked white oak; thence S. 65 E. 180 poles, crossing a branch at 120 poles to four white oaks; thence N. 65 E. 180 poles to the beginning.

Frederick Zimmerman,
Isaac Riley, C.C.
Joseph Bowman, M.

Duncan McArthur, D.S.
May 26th, 1802.
June 1st, 1802.



Surveyed for Mathew Bonner, assignee, 50 acres of land on part of Military Warrant No. 2153 on the lower side of Little Darby's Creek. Beginning at two elms on the southerly bank of said Creek, upper corner thereon to James Galloway Jun's Survey No. 6202; thence S. 64 W. 92 poles to a stake in the easterly line of George Clark's Survey No. 10929; thence with said line N. 60 W. 149 poles to a bur oak, most northerly corner to Clark's said Survey in the line of James Higgin's Survey No. 12143; thence with said line N. 82 E. 46 poles to a stake, corner to said Survey; thence with another line of Higgin's said Survey N. 13 E. 66 poles to a sycamore and elm growing together on the bank of said Creek, corner to Higgin's said Survey and lower corner to Peyton Powell's Survey No. 2451; thence down the creek and binding thereon S. 4 W. 24 poles, S. 28 E. 20 poles, S. 59 E. 30 poles, N. 84 E. 24 poles, S. 82 E. 26 poles, S. 42 E. 44 poles, S. 65 E. 40 poles to the beginning.

Thomas Roberts,
James Roberts, C.C.
James Gardner, M.

Mathew Bonner, D.S.
May 12th, 1831.
July 26th, 1831.