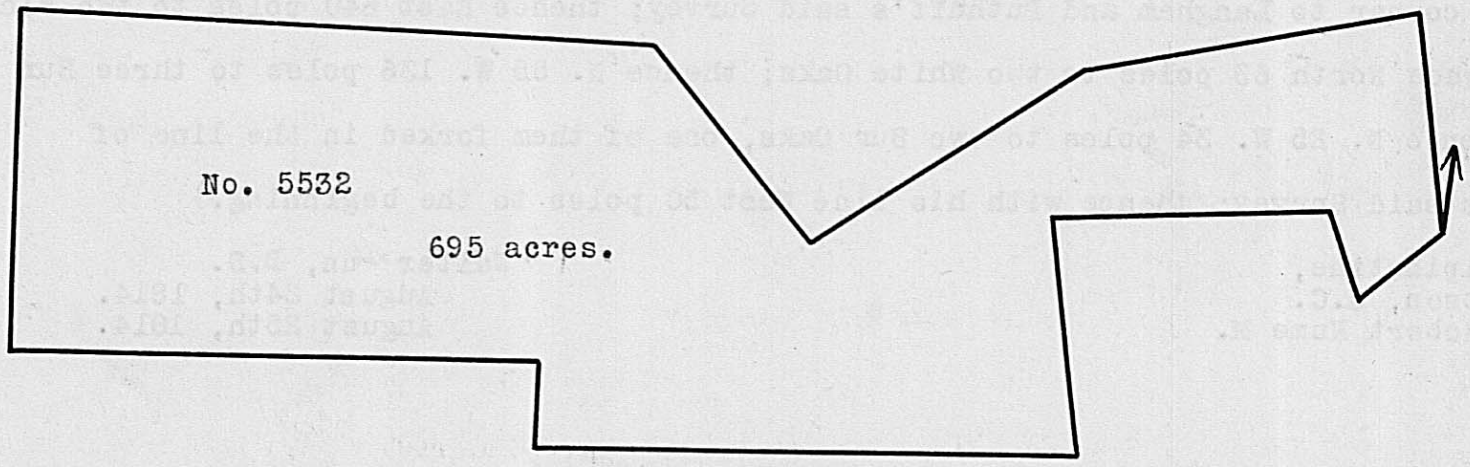


Surveyed for John Moore and William Creighton jr., assee. 829-2/3 acres of land on part of two Military Warrants, viz: Moore 700 acres on part of No. 5160 and Creighton 129-2/3 acres on part of No. 5138, on the waters of Paint Creek. Beginning at a Stake in a Prairie 273 poles Southwest of the Willow Spring running East 235 poles to three Black Oaks; thence South 130 poles to a Stake in a Prairie; thence East 160 poles to a Stake in a Prairie, five Post Oaks as pointers four poles North of the Stake; thence North 130 poles to an Elm; thence W. 60 poles to two Elms; thence North 334.6 poles to a walnut and Hickory; thence West 334.6 poles to four Hickories; thence South 334.6 poles to the beginning.

Robert Hume,
Gabriel Kyle, C.C.
Elias Langham, M.

Joseph Kerr, D.S.
December 29th, 1808.
June 27th, 1809.



Surveyed for Joseph Harness, assee. 695 acres of land on part of a Military Warrant No. 5187 on the waters of Bradford's fork of Deer Creek. Beginning at a Bur Oak, East 200 poles from a White Oak marked D.L. running N. 8 W. 116 poles to a Hickory; thence S. 78 W. 169 poles to three White Oaks, Southwest corner to Jesse Dungan and Southeast corner to Philip Hobough; thence S. 56 W. 175 poles to a Black Walnut and White Oak; thence N. 43 W. 130 poles to a forked Elm; thence West 332 poles to three Elms and a Walnut in the line of Slihu Scott's Survey; thence South 168 poles to four White Oaks in the line of William Creighton's Willowspring Survey; thence East 280 poles to a Black Walnut, Northeast corner to said Creighton's Survey; thence South 42 poles to a Post Oak; thence East 284 poles to a Bur Oak and Stake; thence N. 8 W. 126 poles to a Hickory and Black Oak; thence East 148 poles to two Bur Oaks, corner to Samuel Swearingen's; thence S. 17 E. 40 poles to a Bur Oak; thence N. 57 E. 72 poles to the beginning.

William Barkerville,
Samuel Barkerville, C.C.
Elias Langham, M.

Walter Dun, D.S.
July 20th, 1814.
July 25th, 1814.