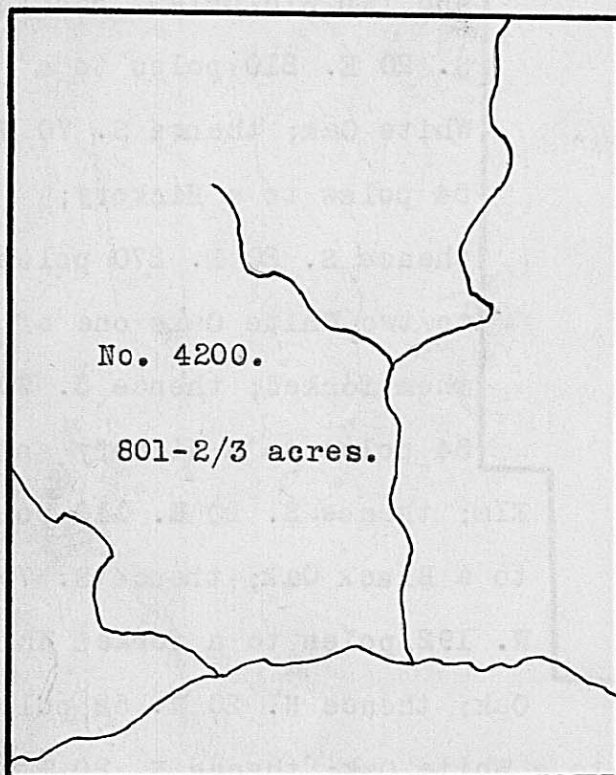


Surveyed for James McNutt, 880 acres of land on part of a Military Warrant No. 4878, on Deer Creek. Beginning at two Hickories, a Mulberry and White Oak, Northwesterly corner to James Innis's Survey No. 6727 and Northeasterly corner to said Innis's Survey No. 2696, running with the line of the last mentioned Survey, N. 70 W. 280 poles, crossing the creek to a Stake, Northwesterly corner to said Survey and in the line of Uriah Springer's Survey No. 1020; thence N. 20 E. 505 poles with Springer's line, passing his corner at 130 poles, and with the line of William Evans's Survey, crossing the creek at 410 poles to five Hickories, Northeasterly corner to said Evans's Survey; thence S. 70 E. 280 poles to a White Oak, Black Oak and Elm; thence S. 20 W. 505 poles to the beginning.

Frederick Zimmerman,
Joseph Bowman, C.C.
Isaac M. Riley, M.

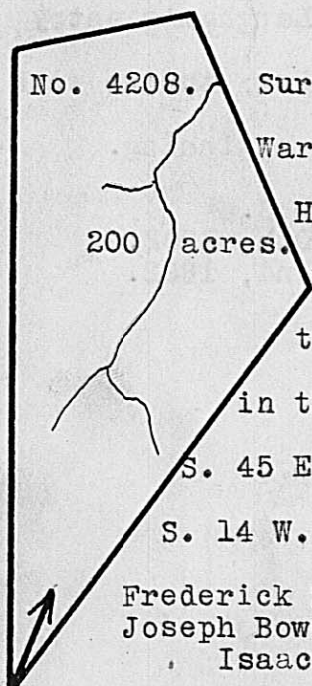
Duncan McArthur, D.S.
May 26th, 1802.
May 31st, 1802.



Surveyed for Joseph Swearengen, 801-2/3 acres of land on part of two Military Warrants viz: 253 acres on No. 341 and 548-2/3 acres on No. 4478 on the waters of Deer Creek. Beginning at a White Oak and Hickory, South corner to Clairborne Maddox's Survey No. 3727, running with his line N. 42 W. 400 poles crossing a branch at 54 poles, passing his corner at 200 poles to two Black Oaks and two White Oaks; thence S. 48 W. 321 poles to three Hickories and a White Oak; thence S. 42 E. 400 poles crossing a branch at 246 poles and one at 394 poles, to an Elm and two White Oaks; thence N. 48 E. 321 poles to the beginning.

John McDonald,
John Morris, C.C.
Isaac Riley, M.

Duncan McArthur, D.S.
November 20th, 1803.
May 2nd, 1804.



Surveyed for David Bradford, assee. 200 acres of land on part of a Military Warrant No. 3994 on branch of Deer Creek. Beginning at two White Oaks and a Hickory, Eastwardly corner to said Bradford's Survey No. 3971, running with his lower line N. 25 W. 320 poles crossing the branch at 162 poles to two White Oaks; thence N. 55 E. 100 poles to a Black Oak and White Oak in the line of Ambroes Gordon's Survey No. 862; thence with Gordon's line, S. 45 E. 160 poles crossing the branch at 48 poles to two Black Oaks; thence S. 14 W. 240 poles to the beginning.

Frederick Zimmerman,
Joseph Bowman, C.C.
Isaac M. Riley, M.

Duncan McArthur, D.S.
May 26th, 1802.
June 1st, 1802.