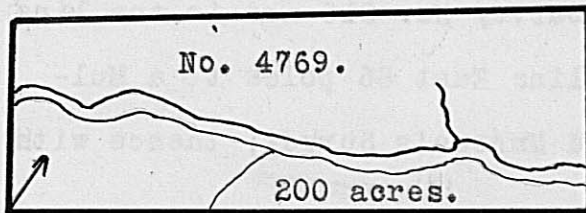


Surveyed for James McNutt, 200 acres of land on part of a Military Warrant No. 4878 on the waters of Deer Creek. Beginning at two Elms and a Hickory, North-erly corner to the Representatives of Mathew Arbuckle's Survey No. 3901, No. 4751. running with his line S. 75 E. 316 poles to two White Oaks from one 200 acres. root; thence N. 42 W. 377 poles to two Black Oaks and two Hickories; thence S. 15 W. 203 poles to the beginning.

John McDonald,
Colin McCullum, C.C.
John Askew, M.

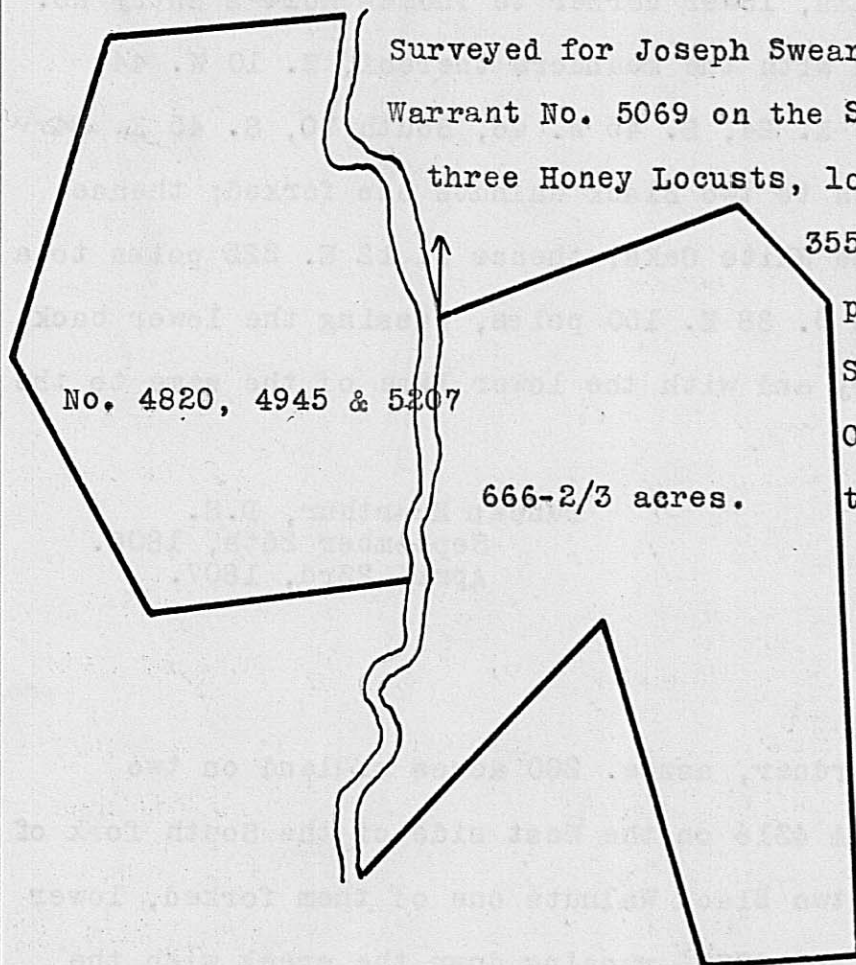
Duncan McArthur, D.S.
September 3rd, 1805.
September 15th, 1805.



Surveyed for Duncan McArthur, assee, 200 acres of land on part of a Military Warrant No. 1984 on the South fork of Darby's Creek. Beginning at two White Oaks, Northeasterly corner to said McArthur's entry No. 4768, and Easterly corner to Richard C. Anderson's Survey No. 4942, running with Anderson's lower line N. 35 W. 108 poles crossing the creek at 63 poles to two hickories and a White Oak; thence N. 55 E. 300 poles to a White Oak; thence S. 35 E. 108 poles crossing the creek at 86 poles to two White Oaks and a Hickory; thence S. 55 W. 300 poles to the beginning.

William Ross,
John Ross, C.C.
Thomas McDonald, M.

Duncan McArthur, D.S.
September 24th, 1808.
October 13th, 1808.



Surveyed for Joseph Swearingin 666-2/3 acres of land on a Military Warrant No. 5069 on the South fork of Darby's Creek. Beginning at three Honey Locusts, lower corner to Alexander McLardy's Survey No. 3559, running with his lower line N. 78 E. 170 poles to four Elms, lower back corner to said Survey; thence S. 34 E. 72 poles to a White Oak and Black Oak; thence S. 5 W. 345 poles to three Elms and a Honey Locust; thence N. 83 W. 78 poles to a stake in the back line of John M. Gregory's Survey No. 3153; thence with his line N. 9 W. 188 poles to two Elms and a Hickory, upper back corner to said Survey; thence with his upper line S. 53 W. 185 poles to a Hackberry, Honey Locust and Black Walnut on the East bank of the Creek, upper corner to said Gregory's Survey; thence up the creek with the meanders thereof, North 44, N. 45 E. 40, N. 45 W. 24, N. 45 E. 20, East 22, N. 10 E. 44 poles crossing the creek to four Elms on the West bank upper corner to Casswell Gardner's Survey No. 4938; thence with his upper line N. 88 W. 147 poles to a stake in a Prairie, upper back corner to said Gardner's Survey; thence N. 17 W. 143 poles to a White Oak; thence N. 25 E. 180 poles to a Stake in a Prairie; thence S. 88 E. 130 poles, crossing the Creek to an Ash on the East bank of the creek in the meanders of said McLardy's Survey; thence down the creek with the meanders thereof S. 20 W. 24, South 14, S. 30 W. 30, S. 50 E. 42, S. 4 E. 80 poles to the beginning.

William Ross,
John Ross, C.C.
John McDonald, M.

Duncan McArthur, D.S.
March 31st, 1807.
April 24th, 1807.