

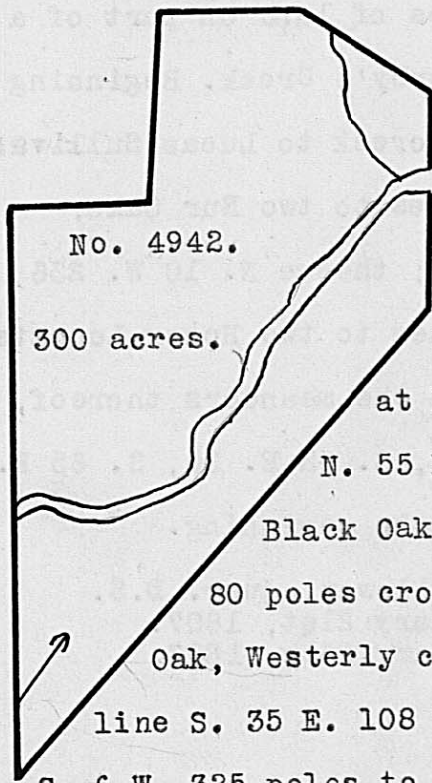
No. 4940.

200 acres.

Surveyed for Caswell Gardner 200 acres of land on a Military Warrant No. 4315 on the West side of the South fork of Darby's Creek. Beginning at a small Elm, lower corner to said Gardner's Survey No. 4939, running down the creek with the meanders thereof, S. 3 E. 94, S. 35 E. 32, S. 5 E. 30, S. 73 E. 35, S. 12 E. 20, S. 8 W. 64, S. 49 W. 6 poles to a White Oak; thence S. $78\frac{1}{2}$ W. 120 poles to a Stake; thence N. $11\frac{1}{2}$ W. 325 poles to three White Oaks; thence S. 70 E. 142 poles to the beginning.

William Ross,
John Ross, C.C.
Thomas McDonald, M.

Duncan McArthur, D.S.
September 27th, 1806.
April 23rd, 1807.



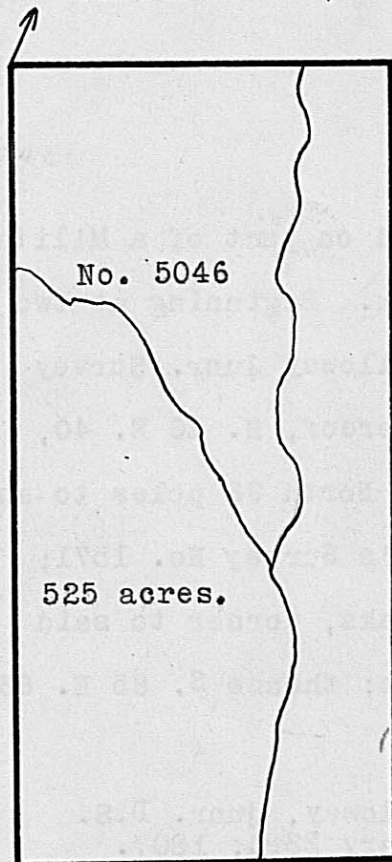
No. 4942.

300 acres.

Surveyed for Richard C. Anderson, assee. 300 acres of land on two Military Warrants No. 2234 and 1075 on the South fork of Darby's Creek. Beginning at two White Oaks and a Honey Locust Easterly corner to Daniel Morris's Survey No. 2584, running with his line and course thereof N. 35 W. 260 poles, passing his Northerly corner at 100 poles and crossing the creek at 110 poles to two White Oaks, a Black Oak and Hickory; thence N. 55 E. 75 poles to two Black Oaks; thence N. 35 W. 100 poles to a Black Oak; thence N. 55 E. 78 poles to a Stake in a Prairie; thence East 80 poles crossing a Spring branch and a Prairie to two Hickories and a White Oak, Westerly corner to Duncan McArthur's Survey No. 4769; thence with his upper line S. 35 E. 108 poles crossing the Creek at 45 poles to two White Oaks; thence S. 6 W. 325 poles to three Hickories; thence N. 35 W. 36 poles to the beginning.

George Teters,
Ebenezer Roheds, C.C.
John McDonald, M.

Duncan McArthur, D.S.
September 23rd, 1806.
April 22nd, 1807.



No. 5046

525 acres.

Surveyed for Robert Means, assee, 525 acres of land on part of a Military Warrant No. 5106 on Gladly run a branch of Deer Creek. Beginning at a Black Walnut and Honey Locust, Northeasterly corner to James McNutt's Survey No. 3844, running with his line, S. 26 E. 420 poles to an Ash and Hickory, Southeasterly corner to said McNutt's Survey; thence N. 64 E. 200 poles crossing the run at 106 poles to two White Oaks; thence N. 26 W. 420 poles to a White Oak; thence S. 64 W. 200 poles crossing the run at 40 poles to the beginning.

John McNutt,
Samuel Steel, C.C.
John McDonald, M.

Duncan McArthur, D.S.
November 15th, 1806.
April 24th, 1807.