

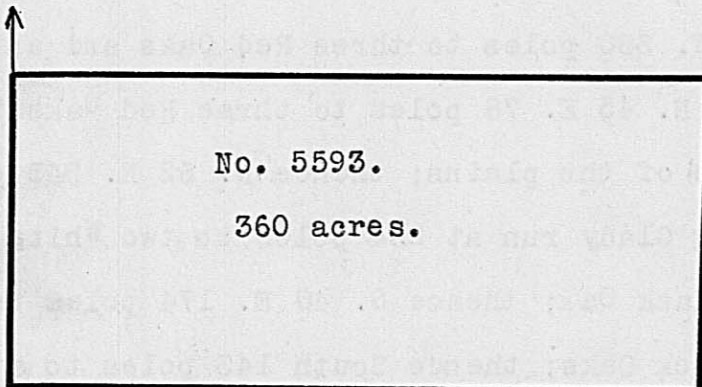
No. 5592.  
300 acres.

Surveyed for David Stephenson 300 acres of land on part of a Military Warrant No. 347 on the waters of Deer creek, between Deer Creek and Oak run. Beginning at a White Oak and Red Oak, corner to Sigismond Stribling's entry

No. 5802, running with his line N. 45 W. 400 poles to three White Oaks; thence N. 20 E. 150 poles to a White Oak; thence S. 45 E. 400 poles to a Black Oak, a Post Oak and Hickory; thence S. 20 W. 150 poles to the beginning.

Robert Soward,  
Joseph Devenport, C.C.  
Samuel Timmons, M.

Joseph Kerr, D.S.  
November 24th, 1809.  
December 22nd, 1809.



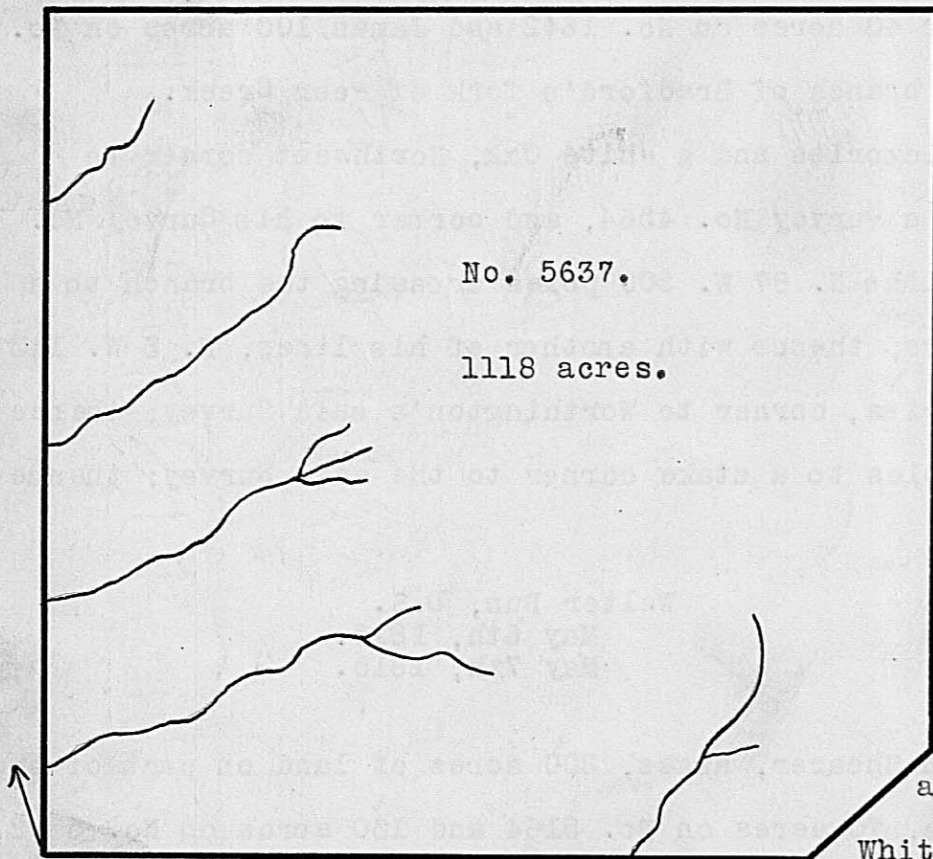
No. 5593.  
360 acres.

Surveyed for David Stephenson 360 acres of land on part of a Military Warrant No. 347 on the waters of Paint Creek. Beginning at a Stake in a prairie, Southwest corner to Joseph Harness' Entry No. 5797, running with his line East 360 poles to two Black Oaks; thence South 160 poles

to a Hickory and Burr Oak; thence West 360 poles to a Stake in a prairie; thence North 160 poles to the beginning.

Robert Soward,  
Joseph Devenport, C.C.  
Samuel Timmons, M.

Joseph Kerr, D.S.  
November 24th, 1809.  
December 22nd, 1809.



No. 5637.  
1118 acres.

Surveyed for Robert Means' assee. 1118 acres of land on part of a Military Warrant No. 5245, on the waters of Deer Creek. Beginning at two Hickories, a Mulberry and White Oak, Northwesterly corner to James Innis' Survey No. 1727, and Southeasterly corner to James McNutt's 880 acre Survey, running with the line of Innis' Survey S. 70 E. 400 poles to an Ash, White Oak and Maple, Northeasterly corner thereof; thence N. 69 E. 84 poles to a Black Oak, Ash and Elm; thence N. 21 E. 386 poles to two White Oaks, Red Oak and Elm, Northeasterly

corner to said McNutt's Survey; thence with his line S. 20 W. 440 poles, crossing several small branches to the beginning.

John McNutt,  
James Barr, C.C.  
John McDonald, M.

Duncan McArthur, D.S.  
April 30th, 1808.  
June 28th, 1809.