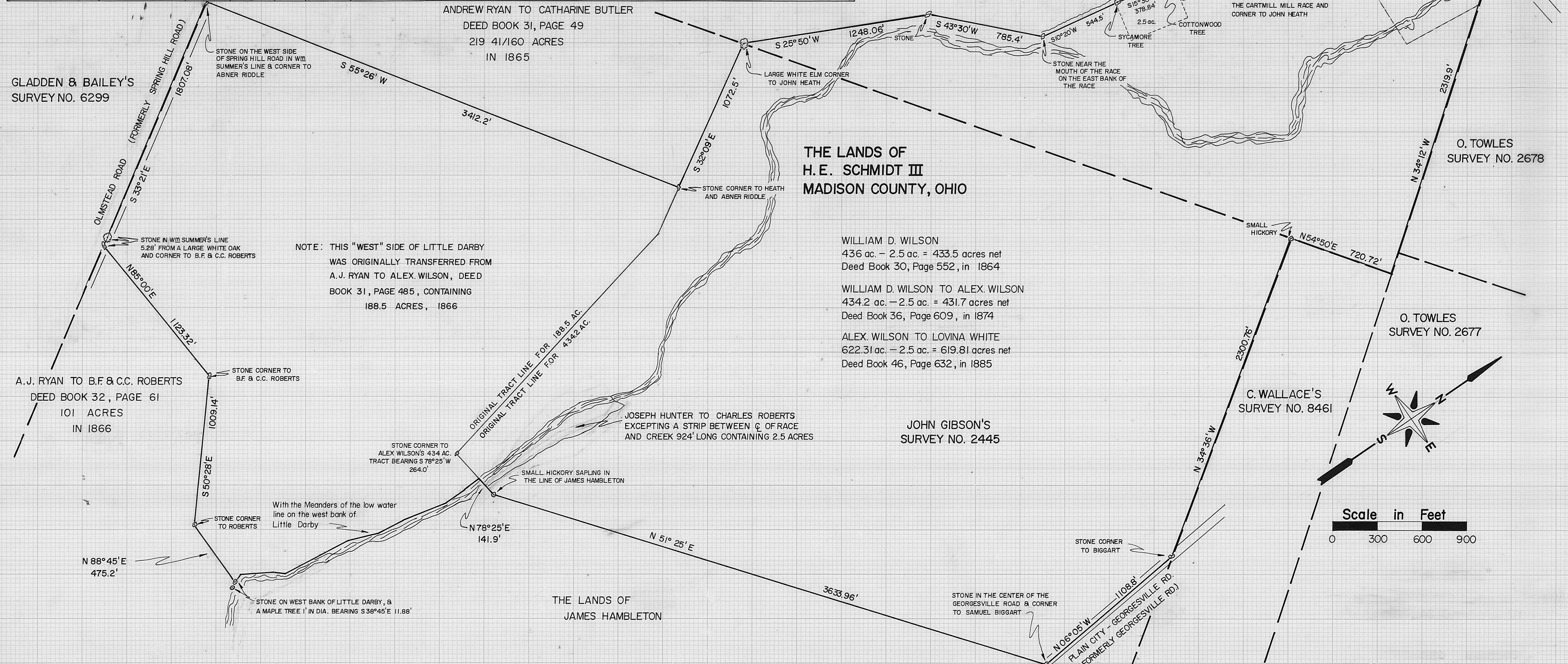
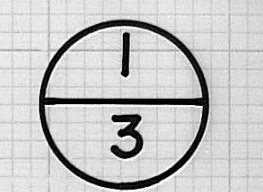


GRANTOR	GRANTEE	ACRES	V.M.S.	YR.	D.B.	PG.	COMMENTS
JOSEPH HUNTER	CHARLES ROBERTS	2.5	2445	1856	25	241	THE ORIGINAL LEGAL DESCRIPTION FOR THE "ROBERTS SAWMILL RACE", AN EXCEPTION
JOSEPH HUNTER	A. J. RYAN	163.5	2445	1857	26	288	EXCEPTS ROBERTS' SAWMILL RACE
JAMES PRICE & OTHERS	A. J. RYAN	VARIOUS	2445-2836	1857			AN ORIGINAL 1862 MAP SHOWS A RYAN OWNING 586 AC. IN V.M.S. 2445 & 281 AC. IN V.M.S. 2836, WHICH CONTAINED THE "MURRAY" LAND. THE RECORDERS' DOES NOT CONTAIN ALL OF THE DESCRIPTIONS FOR RYAN'S ACREAGE.
A. J. RYAN	WILLIAM D. WILSON	436	2445-2836	1864	30	552	NEW SURVEY OF THE RYAN'S LAND CONTAINING LITTLE DARBY CREEK AND EAST OF CREEK. DELETE 2.5 AC. FOR THE "SAWMILL RACE" LEAVING A NET OF 433.5 ACRES.
A. J. RYAN	ALEXANDER WILSON	188.5	2445	1866	31	485	NEW SURVEY OF RYAN'S LAND WEST OF WILLIAM WILSON'S 436 AC. TRACT
WILLIAM D. WILSON	ALEXANDER WILSON	434.2	2445-2836	1874	36	609	NEW SURVEY OF WILLIAM WILSON'S 436 AC. TRACT. DELETE 2.5 ACRES FOR THE "SAWMILL RACE" LEAVING 431.7 ACRES.
ALEXANDER WILSON	JAMES GILLIVAN	3.142	2836	1879	40	468	EXCEPTION TO ALEXANDER WILSON'S 434.2 ACRE TRACT
THOMAS CARTMILL	JOHN RENNER	3.74	2836	1881	42	360	ADJOINING DESCRIPTION THAT DESCRIBES THE FLOURING MILL RACE, DEED BOOK 31, PG. 49 (A. RYAN TO C. BUTLER) ALSO DESCRIBES THE MILL RACE.
ALEXANDER WILSON	LOVINA WHITE	622.31	2445-2836	1885	46	632	THIS DESCRIPTION IS CONSIDERED THE "PARENT DEED". THE DESCRIPTION IS NOT A NEW SURVEY, BUT DOES "EXCLUDE" THE 3.142 ACRES TO SULLIVAN; HOWEVER, THE ADDITIONAL ACREAGE (AS NOTED IN THE DESCRIPTION "TO THE NW CORNER OF LOT 87 OF BURNHAM'S ADDITION") INCLUDING LOTS 87 & 88, WITH ADDITIONAL FRONTAGE ALONG THE NATIONAL ROAD IS PARTLY IN ERROR, BECAUSE IN DEED BOOK 32, PAGE 387, ALEXANDER WILSON CONVEYED 192' BY 65'-2" TO JACOB MOWER (WHICH INCLUDED ALL OF LOT 87, PART OF LOT 88 AND THE AREA WITHIN PEARL STREET 65'-2" IN LENGTH), CONTAINING APPR. 0.29 ACRES. THEREFORE, THE NET ACREAGE IS 622.31 MINUS THE 0.29 AC. AND THE 2.5 AC (SAWMILL RACE), LEAVING 619.52 AC. NET.
LOVINA WHITE	VILL. WESTJEFFERSON	2.5	2836	1926			COURT OF COMMON PLEAS "COMPLETE RECORD 30, PAGE 283", INCLUDES TWO EASEMENTS, LEAVING 617.02 AC. (619.52 MINUS 2.5)
LOVINA WHITE	OHIO FUEL SUPPLY CO.			1905	70	595	EASEMENT
LOVINA WHITE	F. MURRAY & P. TOUGHER	619.21	2445-2836	1939	126	129	SHERIFF'S SALE: TRUE ACREAGE, 622.31 - (2.5 + 2.5 + 0.29) = 617.02
PETER TOUGHER	FRANK MURRAY	619.21	2445-2836	1940	128	215	INTEREST THEREIN - 617.02 ACTUAL ACREAGE
FRANK MURRAY	FLORENCE MURRAY	619.21	2445-2836	1943	134	493	NET ACREAGE AS ABOVE - 617.02
FRA. & FLOR. MURRAY	JAMES LONG	15.670	2836	1954	150	207	EXCEPTION, LEAVING A NET ACREAGE OF 601.35 (617.02 MINUS 15.67)
FRA. & FLOR. MURRAY	JAMES LONG	1.25	2836	1955	150	208	QUIT-CLAIM FOR LOTS 87 & 88, AND AREA IN PEARL ST. TRUE TRANSFER IS THE REMAINING PART OF LOT 88 AND THAT PORTION OF PEARL ST. BEING 192' BY 34.83' = 0.15 AC., LEAVING A NET ACREAGE OF 601.20 (601.35 MINUS 0.15). SEE A. WILSON TO J. MOWER ABOVE, 601.20 AC. NET. NOTE TWO REPETITIVE ERRORS INCORPORATED INTO THE LEGAL DESCRIPTION GOING UP LITTLE DARBY CREEK
FRANK MURRAY	FLORENCE MURRAY	603.54	2445-2836	1955	151	447	EASEMENT
FLORENCE MURRAY	OHIO FUEL GAS CO.			1955	151	661	EASEMENT
FLORENCE MURRAY	VILL. WESTJEFFERSON			1959	156	49	EASEMENT
FLORENCE MURRAY	BETTY ANN MURRAY	603.54	2445-2836	1980	250	808	TRUE NET ACREAGE IS 601.20. SEE ALSO D.B. 239, PG. 409 FOR TRANSFER OF INTEREST TO BETTY ANN MURRAY
BETTY ANN MURRAY	THE HOLY SEE	600.01	2445-2836	1981	255	345	NET ACREAGE IS 601.20
THE HOLY SEE	H. E. SCHMIDT III	600.01	2445-2836	1981	255	375	NET ACREAGE AS SUMMARIZED ABOVE IS 601.20 ACRES

PLAT OF THE "PARENT DEED" WITH DEED REFERENCES AND COMMENTS



BABB ENGINEERING & SURVEYING
 11 EAST 1st STREET, P.O. BOX 374
 LONDON, OHIO 43140

DRAWN BY <u>LS</u>	SV- 11581
CHECKED BY <u>NS</u>	JOB NO.
	9-81