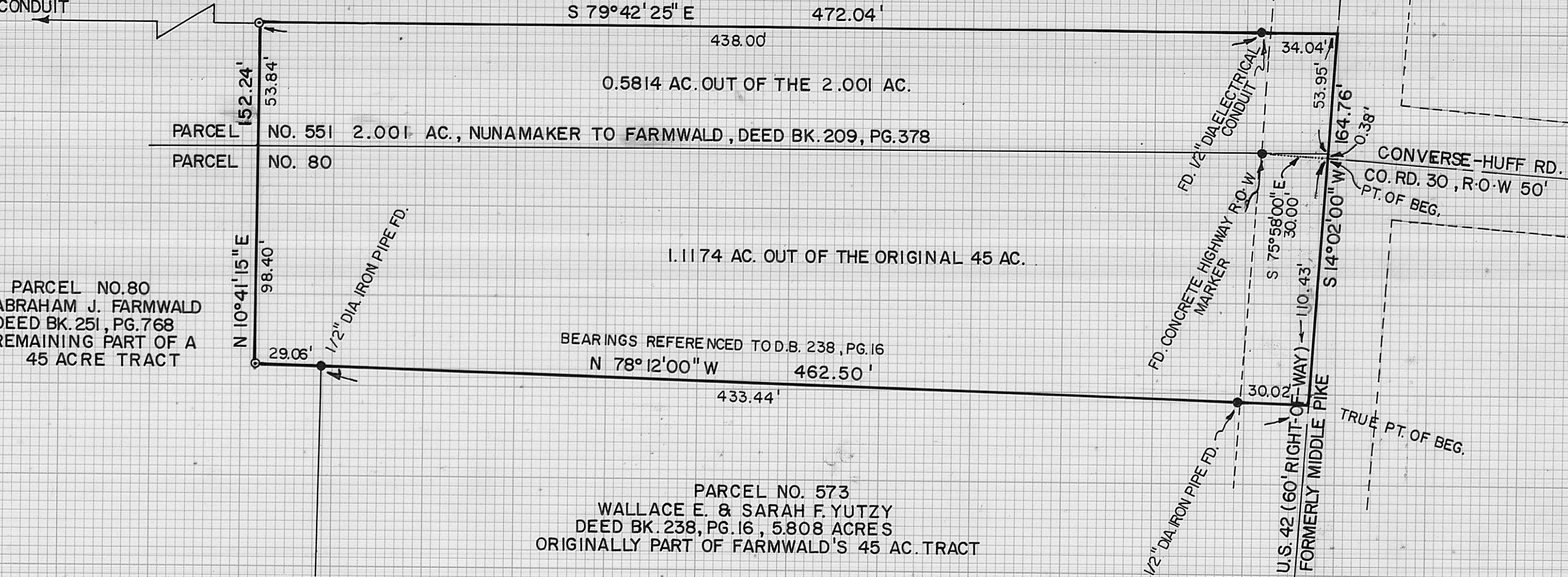


PARCEL NO. 109, 110 & 111, ANNA MAE FOUST NUNAMAKER
ORIGINAL 100.63 AC., DEED BK. 201, PG. 65

N 79°42'25" W 1131.66' TO
FD. 1/2" DIA. ELECTRICAL
CONDUIT



PARCEL NO. 573
WALLACE E. & SARAH F. YUTZY
DEED BK. 238, PG. 16, 5.808 ACRES
ORIGINALLY PART OF FARMWALD'S 45 AC. TRACT

⊙-IRON PIPES SET 3/4" IN BY 30" IN
LENGTH WITH CAPS MARKED P.S. 5969

PLAT OF 1.6988 ACRES SURVEYED OUT OF
AN ORIGINAL 45.0 AC. TRACT AND A 2.001
AC. TRACT, V.M.S. 7432-7756, DARBY TWP.,
MADISON COUNTY, OHIO, FOR ABRAHAM FARMWALD

I HEREBY CERTIFY THAT THE HEREON PLATTED
PROPERTY WAS SURVEYED TO ACCEPTABLE
STANDARDS:
Neil Babb 15 Dec 1982
NEIL BABB PS. 5969

BABB ENGINEERING & SURVEYING
209 LAFAYETTE ST., P.O. BOX 374
LONDON, OHIO 43140
TELE: 614-852-4121

DATE: 15 DEC 1982	DRAWN BY: NB
JOB NO. SV-08782	CHECKED BY: wub
FIELD BOOK 14	57-82