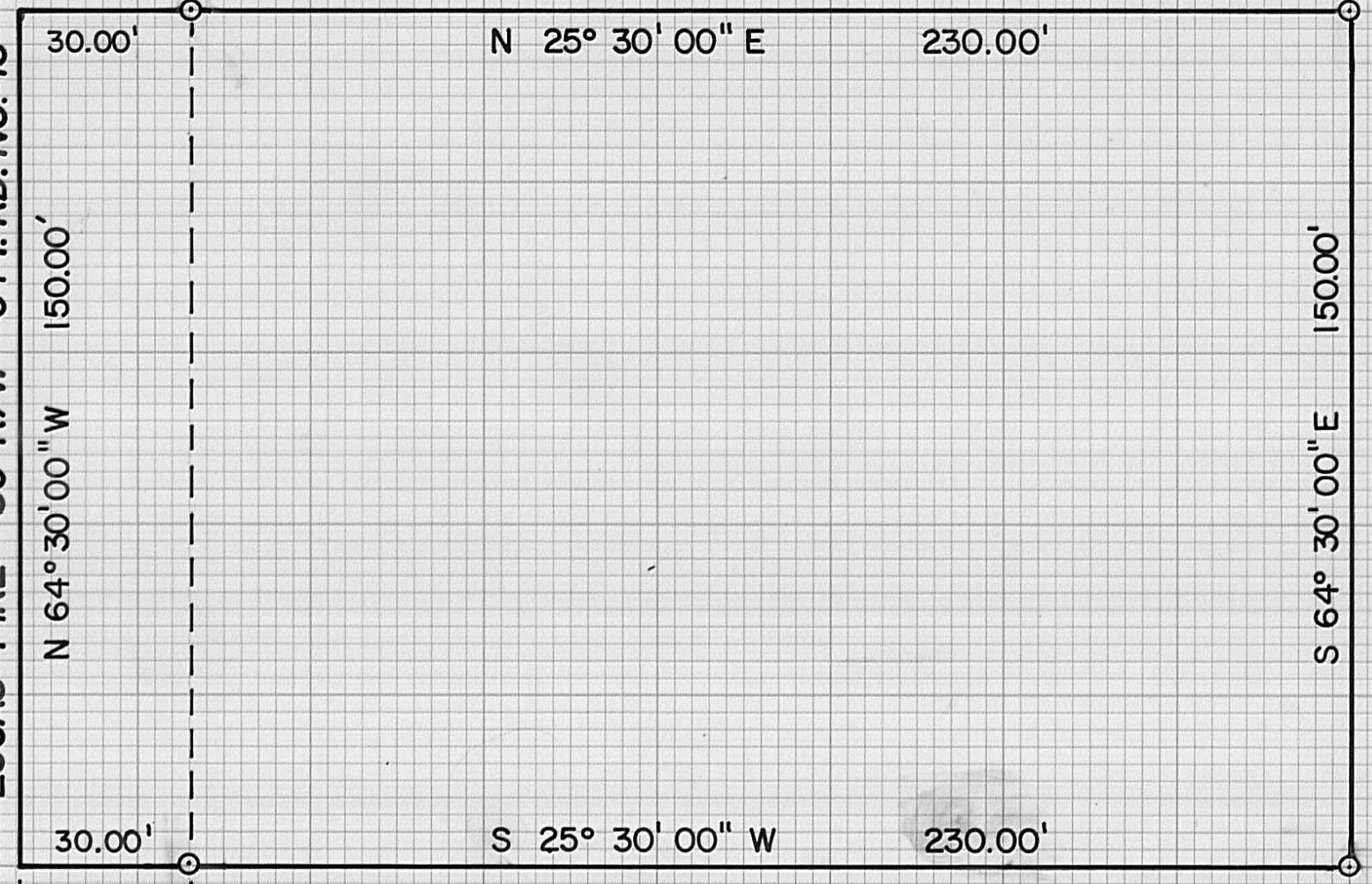


N 64°30'00" W 1921.97'
TO P.I. IN LUCAS PIKE

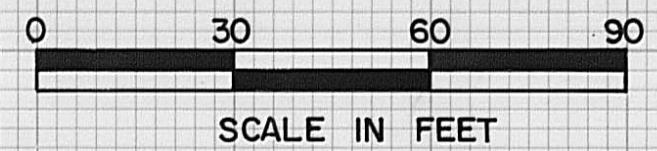
RUTH E. STRALEY
152.48 AC. (THIRD TRACT)
D.B. 260, PG. 1

LUCAS PIKE 60' R/W CTY. RD. NO. 45



⊙ - INDICATES IRON PIPE SET 3/4" X 30"
WITH CAPS MARKED P.S. 5969.

S 64°30'00"E 206.78' TO N.W. CORNER
OF 1.0388 ACRES IN THE NAME OF THOMAS
V. REED, D.B. 249/PG. 246.



PLAT SHOWING A SURVEY OF 0.7920 ACRES
OUT OF AN ORIGINAL 152.48 ACRES RECORDED
IN DEED BOOK 260, PAGE 1 IN THE NAME OF
RUTH E. STRALEY, CANAAN TWP., MADISON
COUNTY, OHIO. V.M.S. 8696.

BABB ENGINEERING & SURVEYING
209 LAFAYETTE ST., P.O. BOX 374
LONDON, OHIO 43140
TELE: 614-852-4121

DRAWN BY: <i>Jes</i>	DATE: 8/4/83	CHECKED BY: <i>NB</i>	DATE: 8/4/83
I HEREBY CERTIFY THAT THE HEREON PLATTED PROPERTY WAS SURVEYED TO ACCEPTABLE STANDARDS:			
<i>Neil Babb</i>		<i>4 Aug 1983</i>	
NEIL BABB	P.S. 5969	DATE	
JOB NO. SV-06683, FIELD BK. 18			47-83