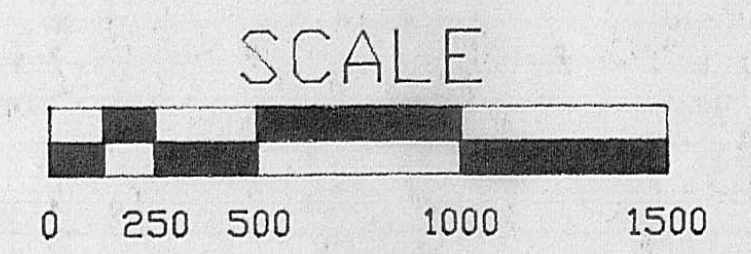


BASIS OF BEARING IS
 S 87° 36' 00" E, THE RECORD
 CENTERLINE BEARING OF S.R. 323
 FROM STA. 116+71.7 TO STA.
 164+46.5 AS SHOWN ON STATE
 HIGHWAY R/W PLANS FOR S.H. 658
 SEC. A, MADISON COUNTY



DELTA = 6° 32' 10"
 RADIUS = 2839.93'
 LENGTH = 323.97'
 CHORD = N 9° 16' 15" W
 323.79'

VILLAGE OF SOUTH SOLON CORPORATION LINE

On Bridge Centerline S.R. 323
 S 87° 36' 00" E 936.74'
 S 87° 36' 00" E 1154.96'
 S 87° 36' 00" E 800.00'
 N 2° 24' 00" E 326.70'
 S 2° 24' 00" W 326.70'

Dahne Willis Winebrenner
 DB. 251 PG. 459
 Parcel 2 - 25.29 Acres
 Parcel 3 - 57 Acres

139,266 Acres
 to be conveyed to
 Richard & Florence
 Pitstick

237,426 ACRES
 (1,223 Ac. In Corp.)
 (1,296 Ac. R/W)
 DB. 115 PG. 580
 parts of the First, Second,
 and Third
 DB. 112 PG. 549
 part of 100.42 Acres

221,656 ACRES
 (0,796 Ac. R/W)
 DB. 112 PG. 549
 Part of 100.42 Acres
 DB. 61 PG. 47
 plus 1933 affidavit
 164 acres

A. Clifford Clemans
 DB. 151 PG. 48
 Parcel 1 - 4.40 Acres
 Parcel 2 - 29.688 Acres

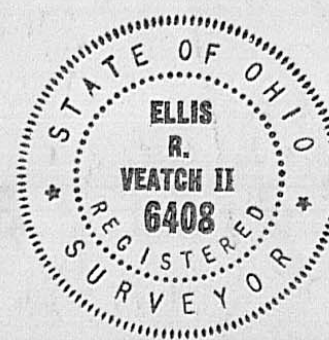
SITUATED IN THE STATE OF OHIO,
 COUNTY OF MADISON, TOWNSHIP OF
 STOKES, AND PARTLY IN THE
 VILLAGE OF SOUTH SOLON, AND
 BEING PARTLY IN V.M.S. 8582 AND
 PARTLY IN V.M.S. 1133.
 1,223 Acres in South Solon
 554,376 Acres in Stokes Township

96,517 ACRES
 (1,136 Ac. R/W)
 DB. 115 PG. 580
 Part of the Second
 and Third Tracts

Louise Dorn &
 Pauline Pierce
 DB. 161 PG. 202
 79.96 Acres

I HEREBY CERTIFY THAT THIS PLAT IS A TRUE AND
 CORRECT REPRESENTATION OF LANDS ACTUALLY
 SURVEYED, AND THAT THE DISTANCES AND BEARINGS
 ARE SHOWN CORRECTLY, AND THAT MONUMENTS HAVE
 BEEN FOUND OR SET AS INDICATED.

Ellis R. Veatch II
 ELLIS R. VEATCH II
 OHIO SURVEYOR #6408



MAIMIE SMITH WATSON ESTATE
 555,599 Acres / 3 Tracts

Surveyed for
 Firestone Coldren Whitney & Whitney
 15 West Winter St. - Delaware, Ohio

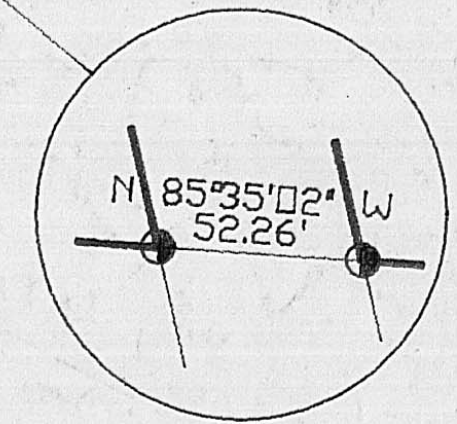
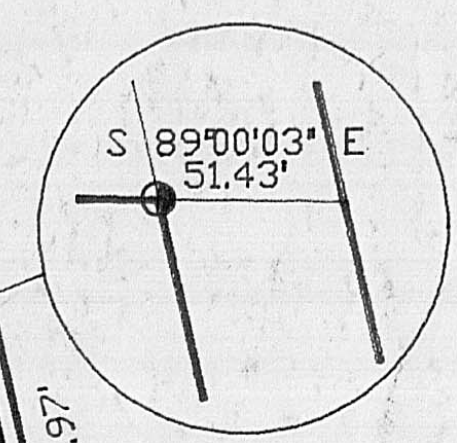
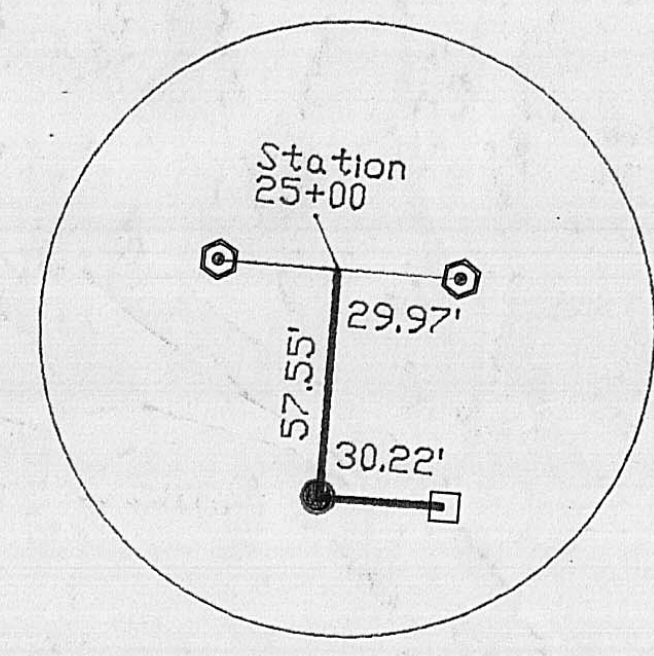
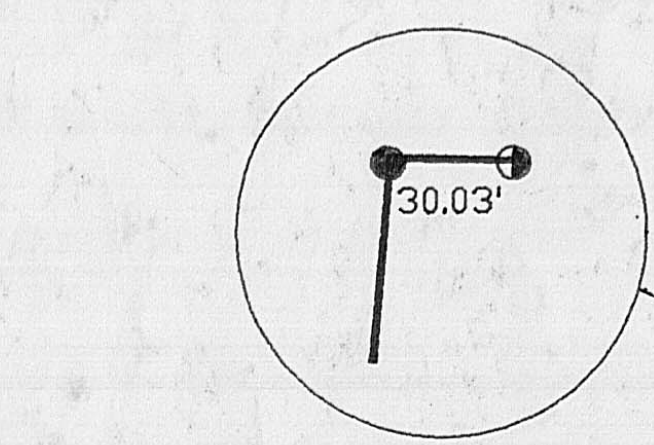
SCALE: 1"=500' JOB: 830701-E

DATE: 8/25/83 SURVEYED: ERV
 DRAWN: ERV

REVISIONS:

LEGEND

- R.R. SPIKE SET
- 3/4" I.D. PIPE WITH PLASTIC PLUG SET
- ⊙ 5/8" REBAR WITH ALUM. CAP SET
- IRON POST IN CONC. FOUND
- ⊗ PK NAIL SET IN WOOD POST
- ⊗ OLD WOOD POST
- ⊗ CONCRETE R/W MON. WITH BRASS CAP



Garnette Lansing
 DB. 223 PG. 174
 23.19 Ac. Tract 5

Shirley H.
 Simmermon, Etal
 DB. 240 PG. 357
 53.39 Ac. Tract 2

Helen C. Brock
 DB. 248 PG. 154
 Tract 1 - 77.11 Acres
 Tract 2 - 90.90 Acres

Centerline S.R. 41
 N 4° 59' 46" E - 1650.00'

DETROIT, TOLEDO, & IRONTON R.R. - 3993.98'
 N 12° 32' 20" W - 13993.98'

S 89° 00' 03" E - 2158.15'

N 85° 17' 11" W - 1839.73'

N 85° 35' 02" W - 874.43'

N 85° 40' 46" W - 837.13'

N 85° 40' 46" W - 1825.36'

S 12° 28' 45" E - 1868.77'

N 12° 28' 45" W - 1871.97'

N 4° 59' 39" E - 6018.93'

S 4° 13' 37" W - 1155.17'

S 3° 20' 55" W - 814.55'

S 4° 06' 59" W - 1915.79'

S 0° 06' 31" E - 2176.06'

P.T. 12495+75
 495.27'

S 2° 24' 00" W 326.70'

N 2° 24' 00" E 326.70'

S 87° 36' 00" E 947.97'

S 87° 36' 00" E 800.00'

S 87° 36' 00" E 936.74'

S 87° 36' 00" E 1154.96'

S 87° 36' 00" E 29.98'

R/W 30.43'

30.03'

70.75'

30.03'

119.87'

29.99'

29.99'

STATION 116+71.7 S.R. 323

STATION 125+00

MAIMIE SMITH WATSON ESTATE 110.235 Ac.

Roy Staffan DB. 218 PG. 506 4,000 Acres plus 2,000 Acres to be conveyed

On Bridge Centerline S.R. 323

S 87° 36' 00" E 936.74'

S 87° 36' 00" E 1154.96'

S 87° 36' 00" E 800.00'

N 2° 24' 00" E 326.70'

S 2° 24' 00" W 326.70'

S 85° 21' 35" E 409.73'

S 85° 21' 35" E 409.73'

S 4° 13' 37" W 1155.17'

S 4° 13' 37" W 1155.17'

S 3° 20' 55" W 814.55'

S 4° 06' 59" W 1915.79'

S 4° 06' 59" W 1915.79'

S 0° 06' 31" E - 2176.06'

S 0° 06' 31" E - 2176.06'

S 87° 36' 00" E 29.98'

R/W 30.43'

30.03'

70.75'

30.03'

119.87'

29.99'

29.99'

STATION 116+71.7 S.R. 323

STATION 125+00

MAIMIE SMITH WATSON ESTATE 110.235 Ac.

Roy Staffan DB. 218 PG. 506 4,000 Acres plus 2,000 Acres to be conveyed

On Bridge Centerline S.R. 323

S 87° 36' 00" E 936.74'

S 87° 36' 00" E 1154.96'

S 87° 36' 00" E 800.00'

N 2° 24' 00" E 326.70'

S 2° 24' 00" W 326.70'

S 85° 21' 35" E 409.73'

S 85° 21' 35" E 409.73'

S 4° 13' 37" W 1155.17'

S 4° 13' 37" W 1155.17'

S 3° 20' 55" W 814.55'

S 4° 06' 59" W 1915.79'

S 4° 06' 59" W 1915.79'

S 0° 06' 31" E - 2176.06'

S 0° 06' 31" E - 2176.06'

S 87° 36' 00" E 29.98'

R/W 30.43'

30.03'

70.75'

30.03'

119.87'

29.99'

29.99'

STATION 116+71.7 S.R. 323

STATION 125+00

MAIMIE SMITH WATSON ESTATE 110.235 Ac.

Roy Staffan DB. 218 PG. 506 4,000 Acres plus 2,000 Acres to be conveyed

On Bridge Centerline S.R. 323

S 87° 36' 00" E 936.74'

S 87° 36' 00" E 1154.96'

S 87° 36' 00" E 800.00'

N 2° 24' 00" E 326.70'

S 2° 24' 00" W 326.70'

S 85° 21' 35" E 409.73'

S 85° 21' 35" E 409.73'

S 4° 13' 37" W 1155.17'

S 4° 13' 37" W 1155.17'

S 3° 20' 55" W 814.55'

S 4° 06' 59" W 1915.79'

S 4° 06' 59" W 1915.79'

S 0° 06' 31" E - 2176.06'

S 0° 06' 31" E - 2176.06'

S 87° 36' 00" E 29.98'

R/W 30.43'

30.03'

70.75'

30.03'

119.87'

29.99'

29.99'

STATION 116+71.7 S.R. 323

STATION 125+00

MAIMIE SMITH WATSON ESTATE 110.235 Ac.

Roy Staffan DB. 218 PG. 506 4,000 Acres plus 2,000 Acres to be conveyed

On Bridge Centerline S.R. 323

S 87° 36' 00" E 936.74'

S 87° 36' 00" E 1154.96'

S 87° 36' 00" E 800.00'

N 2° 24' 00" E 326.70'

S 2° 24' 00" W 326.70'

S 85° 21' 35" E 409.73'

S 85° 21' 35" E 409.73'

S 4° 13' 37" W 1155.17'

S 4° 13' 37" W 1155.17'

S 3° 20' 55" W 814.55'

S 4° 06' 59" W 1915.79'

S 4° 06' 59" W 1915.79'

S 0° 06' 31" E - 2176.06'

S 0° 06' 31" E - 2176.06'

S 87° 36' 00" E 29.98'

R/W 30.43'

30.03'

70.75'

30.03'

119.87'

29.99'

29.99'

STATION 116+71.7 S.R. 323

STATION 125+00

MAIMIE SMITH WATSON ESTATE 110.235 Ac.

Roy Staffan DB. 218 PG. 506 4,000 Acres plus 2,000 Acres to be conveyed

On Bridge Centerline S.R. 323

S 87° 36' 00" E 936.74'

S 87° 36' 00" E 1154.96'

S 87° 36' 00" E 800.00'

N 2° 24' 00" E 326.70'

S 2° 24' 00" W 326.70'

S 85° 21' 35" E 409.73'

S 85° 21' 35" E 409.73'

S 4° 13' 37" W 1155.17'

S 4° 13' 37" W 1155.17'

S 3° 20' 55" W 814.55'

S 4° 06' 59" W 1915.79'

S 4° 06' 59" W 1915.79'

S 0° 06' 31" E - 2176.06'

S 0° 06' 31" E - 2176.06'

S 87° 36' 00" E 29.98'

R/W 30.43'

30.03'

70.75'

30.03'

119.87'

29.99'

29.99'

STATION 116+71.7 S.R. 323

STATION 125+00

MAIMIE SMITH WATSON ESTATE 110.235 Ac.

Roy Staffan DB. 218 PG. 506 4,000 Acres plus 2,000 Acres to be conveyed

On Bridge Centerline S.R. 323

S 87° 36' 00" E 936.74'

S 87° 36' 00" E 1154.96'

S 87° 36' 00" E 800.00'

N 2° 24' 00" E 326.70'

S 2° 24' 00" W 326.70'

S 85° 21' 35" E 409.73'

S 85° 21' 35" E 409.73'

S 4° 13' 37" W 1155.17'

S 4° 13' 37" W 1155.17'

S 3° 20' 55" W 814.55'

S 4° 06' 59" W 1915.79'

Situated in the State of Ohio, the County of Madison, and the Township of Stokes, and in V.M.S. 1133, and being parts of the Second and Third Tracts conveyed to Maimie Smith Watson by Deed of Record in Deed Book 115 Page 580; and being bounded and described as follows:

Beginning at a railroad spike set in the centerline of State Route 41 (60 feet wide) at the southwest corner of the Maimie Smith Watson Estate;

Thence, with the centerline of S.R. 41, N 04-59-46 E, passing a point at station 25+00 as shown on the State Highway Right-of-Way Plans for State Highway 197 (S.R. 41), Madison County Section O.P & So. Solon, at 57.55 feet, a distance of 1650.00 feet to a railroad spike set;

Thence, with the south line of a 139.266 acre tract of the Maimie Smith Watson Estate to be conveyed to Richard and Florence Pitstick, S 89-00-03 E, passing a 3/4" pipe with plastic plug set in the east right-of-way line of S.R. 41 at 30.03 feet, a distance of 2158.15 feet to a 3/4" pipe with plastic plug set;

Thence, with the west right-of-way line of the Detroit, Toledo, and Ironton Railroad, S 12-28-45 E, a distance of 1868.77 feet to a 3/4" pipe with plastic plug set, said pipe bearing for reference N 85-35-02 W, 52.26 feet from a 3/4" pipe with plastic plug set at the southwest corner of the 237.426 acre tract of the Maimie Smith Watson Estate survey;

Thence, with the north line of the 53.39 acre Tract 2 conveyed to Shirley H. Simmermon, et al, by Deed of Record in Deed Book 240 Page 357, N 85-35-02 W, a distance of 874.43 feet to an old wood post found;

Thence, with the north line of the 23.19 acre Tract 5 conveyed to Garnette Lansing by Deed of Record in Deed Book 223 Page 174, N 85-17-11 W, passing a square angle-iron fence post in concrete found at 1809.51 feet, and the east right-of-way line of S.R. 41 at 1809.76 feet, a distance of 1839.73 feet to the point of beginning, containing 96.517 acres more or less, of which 1.136 acres lies within the right-of-way of S.R. 41, subject to all legal rights-of-way, easements, and restrictions of record.

Basis of Bearing is S 87-36-00 E, the record bearing of the centerline of S.R. 323 from Station 116+71.7 to Station 164+46.5, as shown on State Highway Right-of-way plans for S.H. 658, Madison County, Section A.

This description was prepared from an actual survey performed in July, 1983 by Ellis R. Veatch, II, Ohio Surveyor #6408.

Situated in the State of Ohio, the County of Madison, and the Township of Stokes, and partly in V.M.S. 8582 and V.M.S. 1133, and being part of the 100.42 acre tract of land conveyed to Maimie Smith Watson by Deed of Record in Deed Book 112 Page 549 (all Deed and Plat Books are of record in the Recorder's Office, Madison County, Ohio), and all of the 164 acre tract of land conveyed to Maimie L. Smith, et al, as the First Tract in Deed Book 61 Page 47, with Maimie L. Smith Watson's title being reaffirmed in a 1933 title abstract affidavit; and being bounded and described as follows:

Commencing at a railroad spike set at the intersection of the east right-of-way line of the Detroit, Toledo, and Ironton Railroad (50 feet wide) with the centerline of State Route 323 (60 feet wide);

Thence, with the centerline of S.R. 323, S 87-36-00 E, a distance of 2684.71 feet to a railroad spike set, being the Point of Beginning of the tract herein described;

Thence, continuing with the centerline of S.R. 323, S 87-36-00 E, a distance of 1154.96 feet to a railroad spike set, said spike bearing for reference, N 87-36-00 W, 70.75 feet from a railroad spike set at the southwest corner of the 110.235 acre tract of the Maimie Smith Watson Estate;

Thence, with the westerly lines of Parcel 2 (25.29 acres) and Parcel 3 (57 acres) conveyed to Dahne Willis Winebrenner by Deed of Record in Deed Book 251 Page 459, the following three courses:

- 1.) S 00-06-31 E, passing a 3/4 " pipe with plastic plug set in the south right-of way line of S.R. 323 at 30.03 feet, a distance of 2176.06 feet to a 5/8" rebar with aluminum cap set;
- 2.) S 85-21-35 E, a distance of 409.73 feet to a 5/8" rebar with aluminum cap set;
- 3.) S 04-13-37 W, a distance of 1155.17 feet to a PK nail set in a wood fence post;

Thence, with the west line of Parcel 1 (4.40 acres) and Parcel 2 (29.688 acres) conveyed to A. Clifford Clemans by Deed of Record in Deed Book 151 Page 48, S 03-20-55 W, a distance of 814.55 feet to a PK nail set in a wood fence post;

Thence, with the west line of a 79.96 acre tract of land conveyed to Louise Dorn and Pauline Pierce by Deed of Record in Deed Book 161 Page 202, S 04-06-59 W, a distance of 1915.79 feet to a 5/8" rebar with aluminum cap set;

Thence, with a portion of the north lines of Tract 1 (77.11 acres) and Tract 2 (90.90 acres) conveyed to Helen C. Brock by Deed of Record in Deed Book 248 Page 154, N 85-40-46 W, a distance of 1825.36 feet to a 3/4" pipe with plastic plug set;

Thence, with the east line of the 237.426 acre tract of the Maimie Smith Watson Estate survey, N 04-59-39 E, passing a 3/4" pipe set in the south right-of-way line of S.R. 323 at 5988.90 feet, a distance of 6018.93 feet to the Point of Beginning, containing 221.656 acres more or less, of which 0.796 acres lies within the right-of-way of S.R. 323, subject to all legal rights-of-way, easements, and restrictions of record.

Basis of Bearing is S 87-36-00 E, the record bearing of the centerline of S.R. 323 from Station 116+71.7 to Station 164+46.5, as shown on State Highway Right-of-way plans for S.H. 658, Madison County, Section A.

This description was prepared from an actual survey performed in July, 1983 by Ellis R. Veatch, II, Ohio Surveyor #6408.

Situated in the State of Ohio, the County of Madison, the Township of Stokes, and partly in the Village of South Solon, and partly in V.M.S. 8582 and V.M.S. 1133, and being part of the 100.42 acre tract of land conveyed to Maimie Smith Watson by Deed of Record in Deed Book 112 Page 549 (all Deed and Plat Books are of record in the Recorder's Office, Madison County, Ohio), and parts of the First, Second, and Third Tracts conveyed to Maimie Smith Watson by Deed of Record in Deed Book 115 Page 580; and being bounded and described as follows:

Beginning at a railroad spike set at the intersection of the east right-of-way line of the Detroit, Toledo, and Ironton Railroad (50 feet wide) with the centerline of State Route 323 (60 feet wide);

Thence, with the centerline of S.R. 323, S 87-36-00 E, passing a point in the Corporation Line of the Village of South Solon at 119.87 feet and at centerline station 116+71.7 as shown on the State Highway Right-of-way Plans for State Highway 658 (S.R. 323) Section A, Madison County, a distance of 947.97 feet to a railroad spike set, said spike bearing for reference S 02-56-52 W, 29.98 feet from a concrete right-of-way monument with brass disk in the north right-of-way line of S.R. 323 at Station 125+00;

Thence, with the west lines of a 4.000 acre parcel conveyed to Roy Staffan by Deed of Record in Deed Book 218 Page 506, and a 2.000 acre parcel to be conveyed to Roy Staffan from the Maimie Smith Watson Estate, S 02-24-00 W, passing the south right-of-way line of S.R. 323 at 29.99 feet, and a 3/4" pipe found next to a broken concrete monument at 30.43 feet, a distance of 326.70 feet to a 3/4" pipe with plastic plug set;

Thence, with the south line of said 2.000 acre parcel, S 87-36-00 E, a distance of 800.00 feet to a 3/4" pipe with plastic plug set;

Thence, with the east lines of said 2.000 and 4.000 acre parcels, N 02-24-00 E, passing a point in the south right-of-way line of S.R. 323 at 296.71 feet, a distance of 326.70 feet to a small railroad spike set in the centerline of the road on a bridge;

Thence, with the centerline of S.R. 323, S 87-36-00 E, a distance of 936.74 feet to a railroad spike set;

Thence, with the west line of the 221.656 acre tract of the Maimie Smith Watson Estate survey, S 04-59-39 W, passing a 3/4" pipe with plastic plug set in the south right-of-way line of S.R. 323 at 30.03 feet, a distance of 6018.93 feet to a 3/4" pipe with plastic plug set;

Thence, with a portion of the north line of Tract 1 (77.11 acres) conveyed to Helen C. Brock by Deed of Record in Deed Book 248 Page 154, N 85-40-46 W, a distance of 837.13 feet to a 3/4" pipe with plastic plug set, said pipe bearing for reference S 85-35-02 E, 52.26 feet from a 3/4" pipe with plastic plug set at the southeast corner of the 96.517 acre tract of the Maimie Smith Watson Estate survey;

Thence, with the east line of the Detroit, Toledo, and Ironton Railroad, N 12-28-45 W, a distance of 1871.97 feet to a point, said point bearing for reference S 89-00-03 E, 51.43 feet from a 3/4" pipe with plastic plug set at the northeast corner of said 96.517 acre tract;

Thence, continuing with the east railroad right-of-way line, N 12-32-20 W, passing a point being a corner of the Corporation Line of the Village of South Solon at 3498.11 feet, a distance of 3993.38 feet to a 3/4" pipe with plastic plug set at a point of curve, being railroad P.T. Station 12495+75 as shown on the Right-of-Way and Track Map, Sheet V.1-Ohio/113;

Thence, with the arc of the curve of said right-of-way, curving to the right, having an arc length of 323.97 feet, a radius of 2839.93 feet, and a delta angle of 6-32-10, the chord of which bears N 09-16-15 W, a chord distance of 323.79 feet to the point of beginning, containing 237.426 acres more or less, of which 1.296 acres lies within the right-of-way of S.R. 323, and of which 1.223 acres lies within the corporation limits of the Village of South Solon, subject to all legal rights-of-way, easements, and restrictions of record.

Basis of Bearing is S 87-36-00 E, the record bearing of the centerline of S.R. 323 from Station 116+71.7 to Station 164+46.5, as shown on State Highway Right-of-way plans for S.H. 658, Madison County, Section A.

This description was prepared from an actual survey performed in July, 1983 by Ellis R. Veatch, II, Ohio Surveyor #6408.