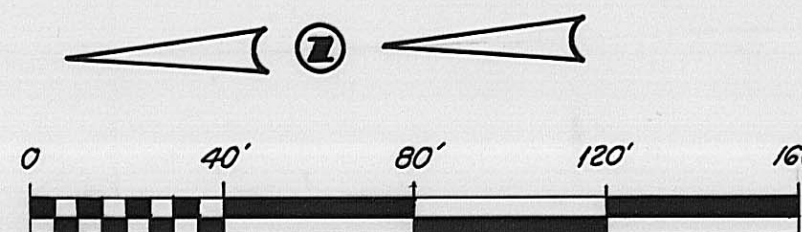
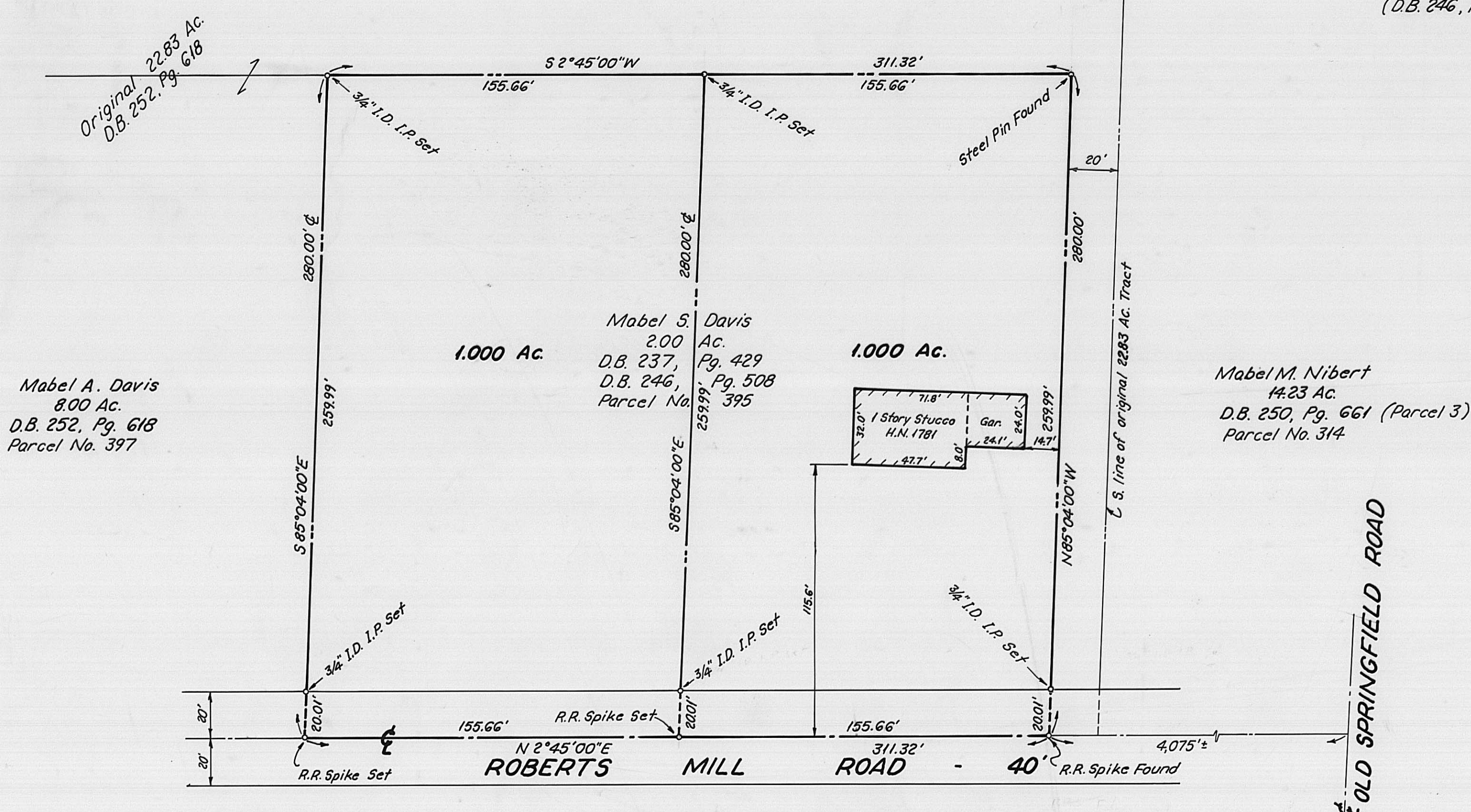


Mabel A. Davis
 14.83 Ac.
 D.B. 252, Pg. 618
 Parcel No. 396



NOTE: Basis of bearings is prior deed (D.B. 246, Pg. 508).

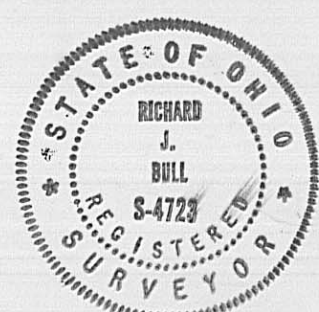


Mabel A. Davis
 8.00 Ac.
 D.B. 252, Pg. 618
 Parcel No. 397

Mabel S. Davis
 2.00 Ac.
 D.B. 237, Pg. 429
 D.B. 246, Pg. 508
 Parcel No. 395

Mabel M. Nibert
 14.23 Ac.
 D.B. 250, Pg. 661 (Parcel 3)
 Parcel No. 314

The undersigned does hereby certify that the attached plat represents an actual field survey performed under his supervision and that the monuments indicated thereon actually exist and that all dimensional data is correct.



By Richard J. Bull
 Richard J. Bull - Ohio Surveyor No. 4723

C.F. BIRD & R.J. BULL, LTD. CONSULTING ENGINEERS 6113 LINWORTH ROAD WORTHINGTON, OHIO		MABEL S. DAVIS (D.B. 246, Pg. 508)	
SCALE: 1" = 40'			
DWN: HEB		CKD: DJB	
DATE: August 26, 1985			
JOB NO. 5V-8085		2,000 Ac. in Virginia Military Survey No. 4515	
SHEET 1 OF 1		12-86	