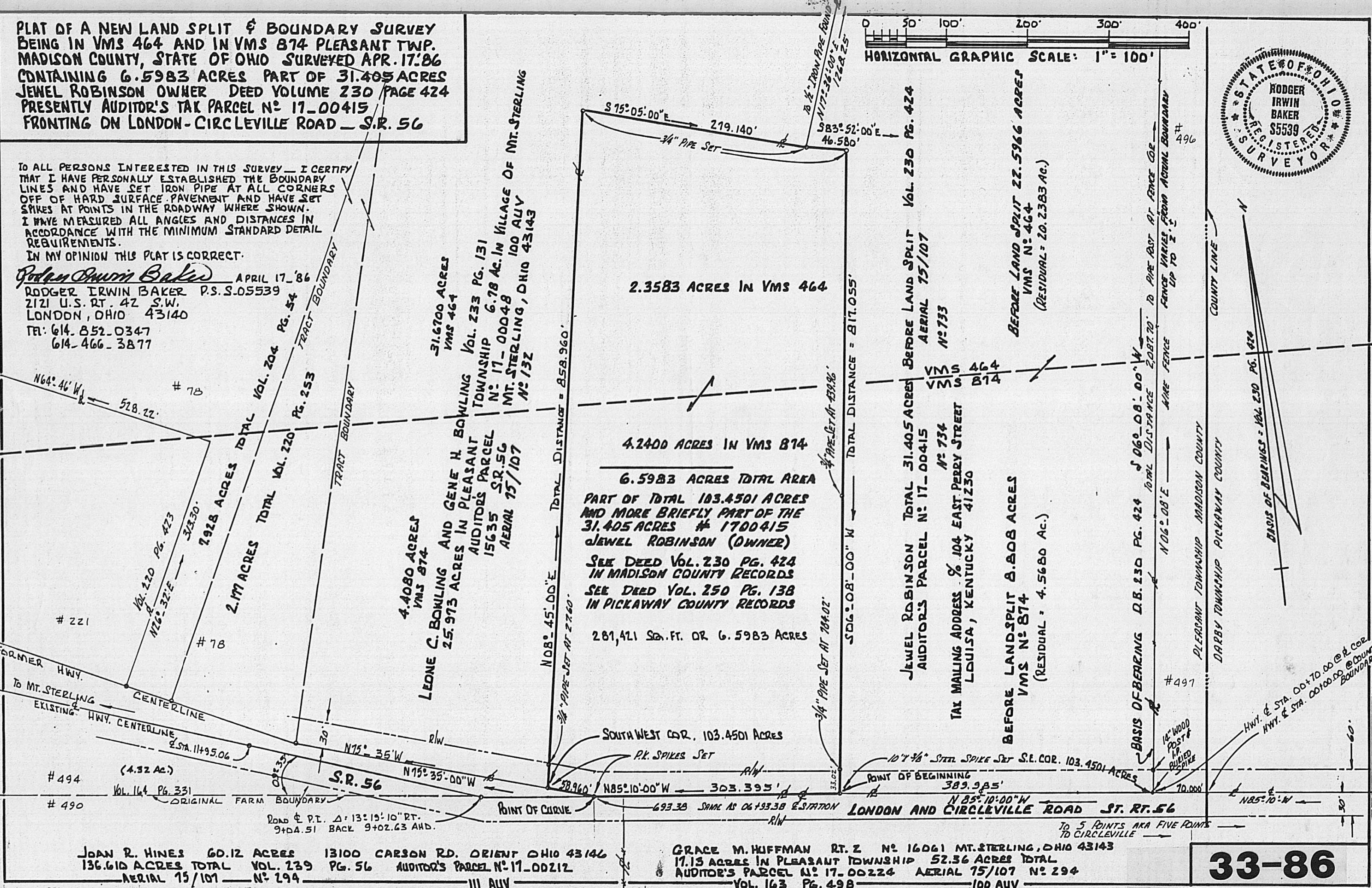


PLAT OF A NEW LAND SPLIT & BOUNDARY SURVEY  
 BEING IN VMS 464 AND IN VMS 874 PLEASANT TWP.  
 MADISON COUNTY, STATE OF OHIO SURVEYED APR. 17. '86  
 CONTAINING 6.5983 ACRES PART OF 31.405 ACRES  
 JEWEL ROBINSON OWNER DEED VOLUME 230 PAGE 424  
 PRESENTLY AUDITOR'S TAX PARCEL N<sup>o</sup> 17-00415  
 FRONTING ON LONDON-CIRCLEVILLE ROAD - S.R. 56



TO ALL PERSONS INTERESTED IN THIS SURVEY - I CERTIFY  
 THAT I HAVE PERSONALLY ESTABLISHED THE BOUNDARY  
 LINES AND HAVE SET IRON PIPE AT ALL CORNERS  
 OFF OF HARD SURFACE PAVEMENT AND HAVE SET  
 SPIKES AT POINTS IN THE ROADWAY WHERE SHOWN.  
 I HAVE MEASURED ALL ANGLES AND DISTANCES IN  
 ACCORDANCE WITH THE MINIMUM STANDARD DETAIL  
 REQUIREMENTS.  
 IN MY OPINION THIS PLAT IS CORRECT.

*Rodger Irwin Baker* APRIL 17 '86  
 RODGER IRWIN BAKER P.S. S.05539  
 2121 U.S. RT. 42 S.W.  
 LONDON, OHIO 43140  
 TEL: 614-852-0347  
 614-466-3877



2.3583 ACRES IN VMS 464

4.2400 ACRES IN VMS 874

6.5983 ACRES TOTAL AREA  
 PART OF TOTAL 103.4501 ACRES  
 AND MORE BRIEFLY PART OF THE  
 31.405 ACRES # 1700415  
 JEWEL ROBINSON (OWNER)  
 SEE DEED VOL. 230 PG. 424  
 IN MADISON COUNTY RECORDS  
 SEE DEED VOL. 250 PG. 138  
 IN PICKAWAY COUNTY RECORDS

281,421 SQ. FT. OR 6.5983 ACRES

JEWEL ROBINSON TOTAL 31.405 ACRES BEFORE LAND SPLIT VOL. 230 PG. 424  
 AUDITOR'S PARCEL N<sup>o</sup> 17-00415 AERIAL 75/107 N<sup>o</sup> 733

TAX MAILING ADDRESS % 104 EAST PERRY STREET  
 LOUISA, KENTUCKY 41230 N<sup>o</sup> 734

BEFORE LANDSPLIT 8.808 ACRES  
 VMS N<sup>o</sup> 874 (RESIDUAL = 4.5680 AC.)

BEFORE LAND SPLIT 22.5966 ACRES  
 VMS N<sup>o</sup> 464 (RESIDUAL = 20.2383 AC.)

JOAN R. HINES 60.12 ACRES 13100 CARSON RD. ORIENT OHIO 43146  
 136.610 ACRES TOTAL VOL. 239 PG. 56 AUDITOR'S PARCEL N<sup>o</sup> 17-00212  
 AERIAL 15/101 N<sup>o</sup> 294 III AUV

GRACE M. HUFFMAN RT. 2 N<sup>o</sup> 16061 MT. STERLING, OHIO 43143  
 17.13 ACRES IN PLEASANT TOWNSHIP 52.36 ACRES TOTAL  
 AUDITOR'S PARCEL N<sup>o</sup> 17-00224 AERIAL 15/107 N<sup>o</sup> 294  
 VOL. 163 PG. 49B 100 AUV

33-86