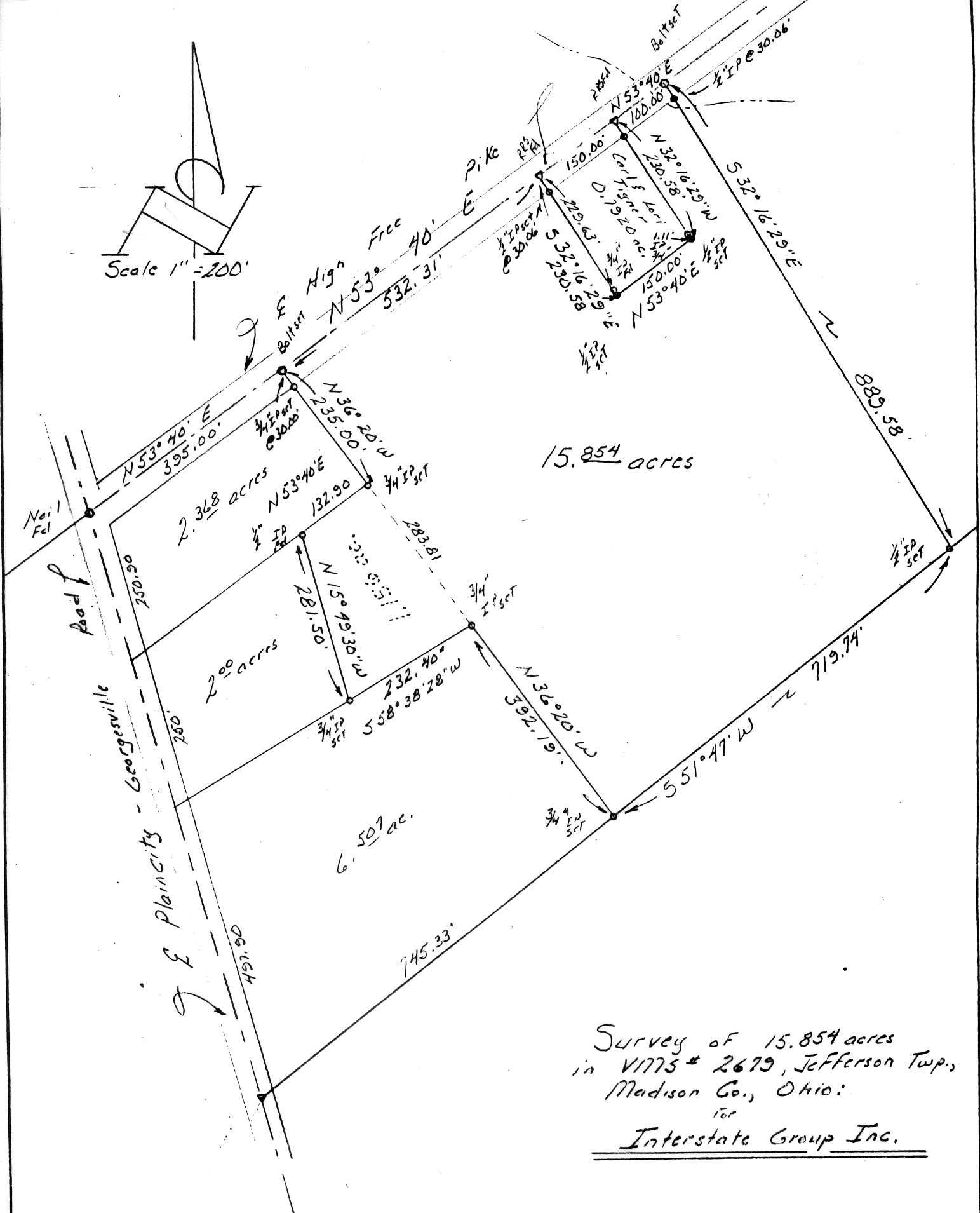


Scale 1" = 200'



15.854 acres

Survey of 15.854 acres  
 in V1775 # 2679, Jefferson Twp.,  
 Madison Co., Ohio:  
 for  
Interstate Group Inc.

I hereby certify that the plat shown hereon  
 was prepared from an actual field survey,  
 under my supervision and that said plat  
 correctly represents said survey.

DATE: August 26, 1986  
 SIGNED: Louis F. Haines

46-86



**LOUIS F. HAINES**  
 SURVEYOR  
 354 KESSLER ST. PHONE 837-2181  
 GROVEPORT, OH 43125

Situated in the Township of Jefferson, County of Madison, State of Ohio, in Virginia Military Survey Number 2679, and being a part of a 76.532 acre tract, conveyed to Theryll W. Clagg, as recorded in Deed Book 263, page 38, Recorder's Office, Madison County, Ohio. More particularly bounded and described as follows:

beginning at a bolt set in the North line of the above mentioned 76.532 acre tract, on the center line of the High Free Pike, at at the Northeast corner of the West Jefferson Lt'd. 2.368 acre tract, D.B.263, Pg.897, thence from said beginning point North 53 degrees 40 minutes East 532.31 feet, along said center and property line, to a railroad spike found in said line, at the Northwest corner of the Carl and Lori Tigner 0.792 acre tract, D.B.263, Pg.666;

thence South 32 degrees 16 minutes 29 seconds East 230.58 feet, along the West line of said 0.792 acre tract, to a 1/2 inch pipe set the Southwest corner of said 0.792 acre tract, passing a 1/2 inch pipe set at 30.06 feet and a 3/4 inch pipe found buried 24 inches deep at 299.63 feet;

thence North 53 degrees 40 minutes East 150.00 feet, along the South line of said 0.792 acre tract, to a 1/2 inch pipe set at the Southeast corner of said 0.792 acre tract;

thence North 32 degrees 16 minutes 29 seconds West 230.58 feet, along the East line of said 0.792 acre tract, passing a 3/4 inch pipe found buried 24 inches deep at 1.11 feet and a 1/2 inch pipe set at 200.52 feet, to a railroad spike found at the Northeast corner of said 0.792 acre tract, on the center line of the High Free Pike and the North line of said 76.532 acre tract;

thence North 53 degrees 30 minutes East 100.00 feet, with aforesaid North property and center line, to a bolt set in said line;

thence South 32 degrees 16 minutes 29 seconds East 889.58 feet, across said 76.532 acre tract, parallel to the East line of said 0.792 acre tract, to a 1/2 inch pipe set in the South line of the 76.532 acre tract and the North line of the Curtis L. Crager 72.00 acre tract, D.B. 157, Pg.76, passing a 1/2 inch pipe set at 30.06 feet;

thence South 51 degrees 47 minutes West 719.74 feet, along the aforesaid property line, to a 3/4 inch pipe set in said line;

thence North 36 degrees 20 minutes West 392.19 feet, into said 76.532 acre tract, to a 3/4 inch pipe set;

thence South 58 degrees 38 minutes 28 seconds West 232.40 feet, to a 3/4 inch pipe set at the Southeast corner of the David and Constance Angel 2.00 acre tract, D.B.255, Pg.335;

thence North 15 degrees 49 minutes 30 seconds West 281.50 feet, along the East line of the Angel 2.00 acre tract, to a 1/2 pipe found at the Northeast corner of said 2.0 acre tract, in the South line of the abovementioned 2.368 acre tract;

thence North 53 degrees 40 minutes East 132.90 feet, along the South line of said 2.368 acre tract, to a 3/4 inch pipe set at the Southeast corner of said tract;

thence North 36 degrees 20 minutes West 235.00 feet, along the East line of said 2.368 acre tract, passing a 3/4 inch pipe set at 205.00 feet, to the place of beginning;

to contain 15.854 acres, be the same more or less and subject to all easements, restrictions and conditions, as the same may be of record.

Surveyed and wirtten by,

Louis F. Haines  
Registered Surveyor 4379