

JAMES W. & NORMA J. HUFF  
 D.B. 204 PG. 419  
 4.056 AC.

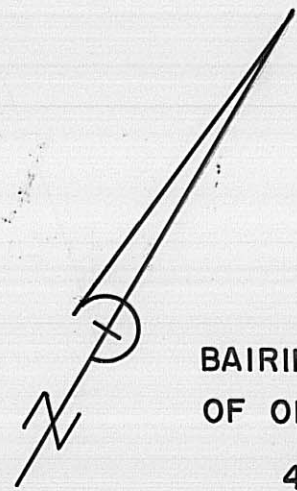
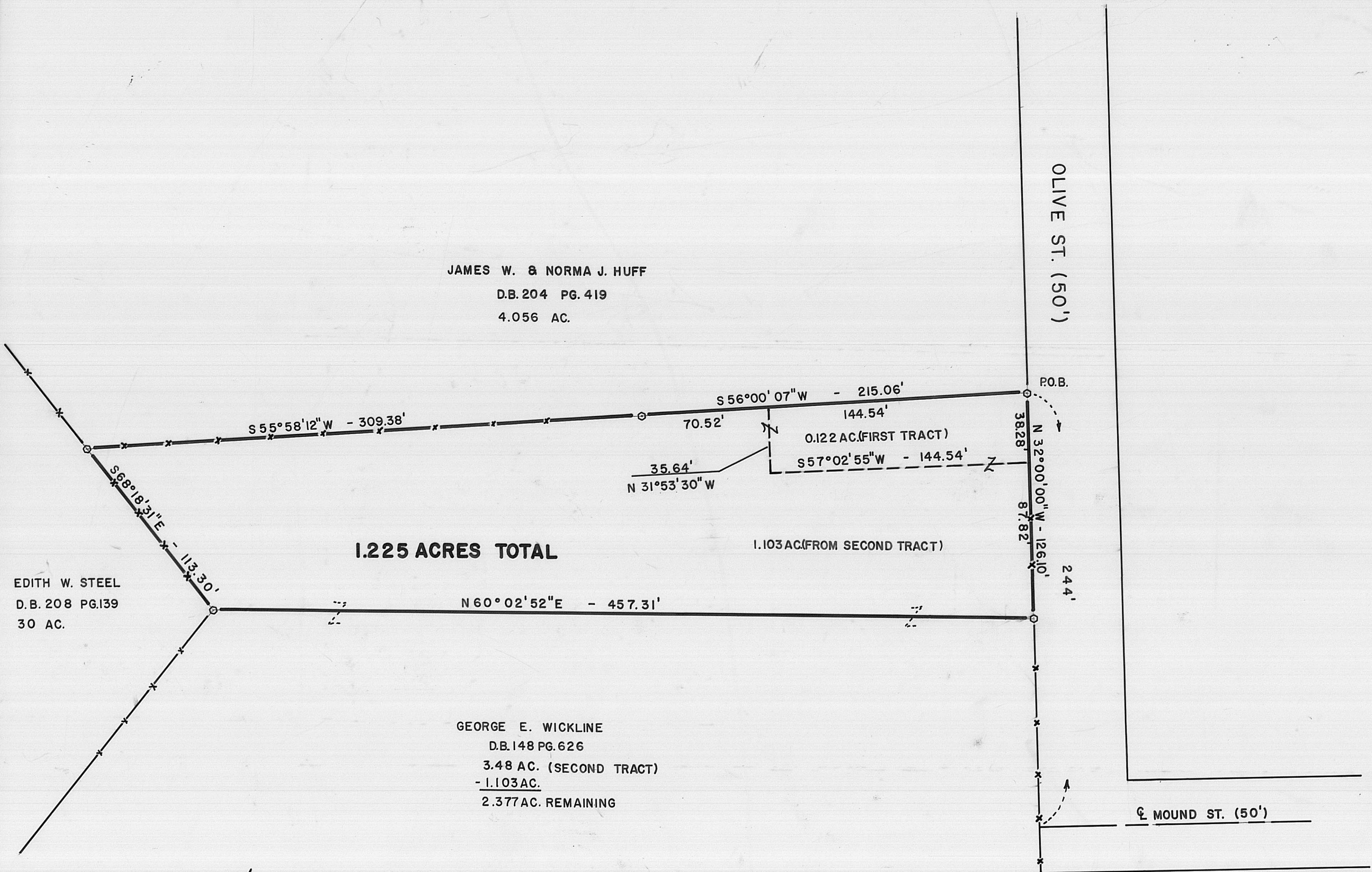
EDITH W. STEEL  
 D.B. 208 PG. 139  
 30 AC.

GEORGE E. WICKLINE  
 D.B. 148 PG. 626  
 3.48 AC. (SECOND TRACT)  
 - 1.103 AC.  
 2.377 AC. REMAINING

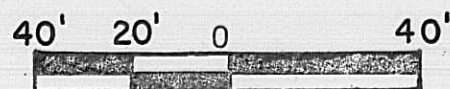
**1.225 ACRES TOTAL**

1.103 AC (FROM SECOND TRACT)

0.122 AC. (FIRST TRACT)



BAIRINGS BASED ON THE SOUTHWEST LINE  
 OF OLIVE ST. AS DESCRIBED IN DB.148PG.626



**LEGEND**

○ · 3/4" DIA. REBAR & YELLOW PLASTIC CAP  
 MARKED "COTTRILL 6858"



I HEREBY CERTIFY THAT THIS PLAT  
 DEPICTS AN ACTUAL FIELD SURVEY  
 PERFORMED BY JAMES R. COTTRILL P.S. #6858  
*James R. Cottrill* DATE 11-17-86

**JAMES R. COTTRILL P.S.**

8256 S.R. 207 N.E. MT. STERLING OH. PH. 869-3811

PLAT OF  
 1.225 ACRES, V.M.S. 8742, CITY  
 OF LONDON, MADISON COUNTY,  
 STATE OF OHIO

DATE: 11-18-86

SCALE: 1" = 40'

**31-87**