

Robert Wright Tr.  
20.00 ac.  
DB. 181 Pg. 392

PRS set

Bolt set  
to replace  
Nail Rd  
@ SW corner  
Clark 12.879 ac

Eva M. Clark  
12.879 ac.  
DB 244 Pg 82

Pleasant Twp  
Madison County

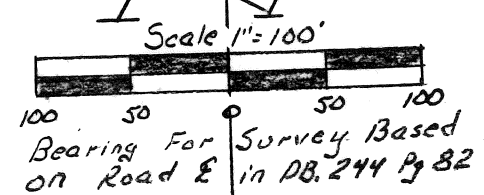
Pickaway County  
Darby Twp.

W<sup>m</sup> Weiner  
41.735 ac.  
228/488

Franklin T. & Mary Riddle  
(21.80 ac. Madison Co)  
DB 154 Pg 95

D.B. 153 Pg 68  
Pickaway Co

Stone in Co. Line  
Sta. 15572

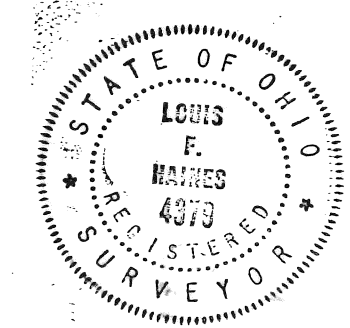


Survey of 0.652 acres  
in VMS # 9270 in Madison & Pickaway  
Counties, Ohio: for

Eva M. Clark



**LOUIS F. HAINES**  
SURVEYOR  
354 KESSLER ST. PHONE 837-2181  
GROVEPORT, OH 43125



I hereby certify that the plat shown hereon was performed from an actual field survey, under my supervision and that said plat correctly represents said survey.

DATE: Jan. 19, 1987 . . . SIGNED: Louis F. Haines