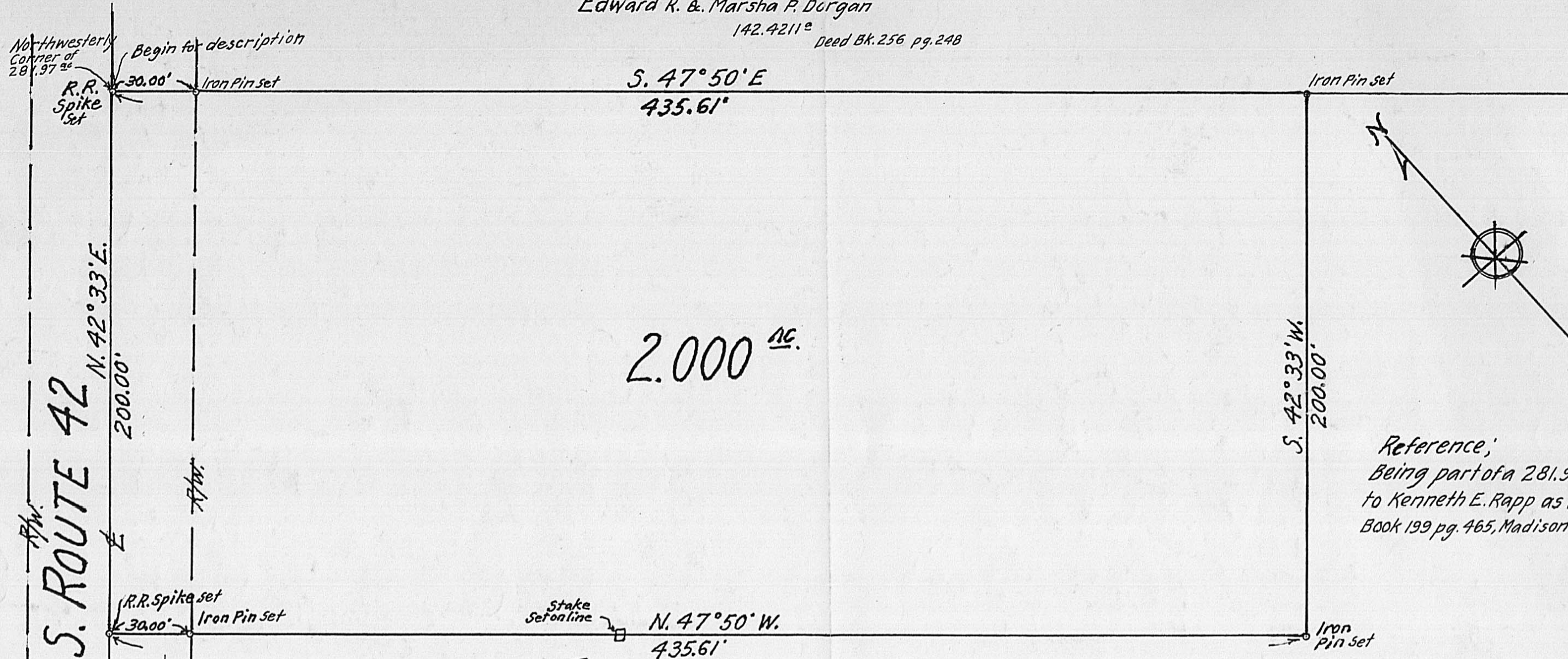


Edward R. & Marsha P. Dorgan  
142.4211<sup>±</sup> Deed Bk. 256 pg. 248



2.000<sup>AC.</sup>

Reference;  
Being part of a 281.97<sup>±</sup> tract as conveyed  
to Kenneth E. Rapp as recorded in Deed  
Book 199 pg. 465, Madison County, Ohio records.

U.S. ROUTE 42  
N. 42° 33' E.  
200.00'

N. 47° 50' W.  
435.61'

S. 42° 33' W.  
200.00'

Kenneth E. Rapp  
281.97<sup>±</sup> Deed Bk. 199 pg. 465

Kenneth E. Rapp  
281.97<sup>±</sup> - Deed D.B. 199 p. 465  
2.000<sup>±</sup> this survey  
279.97<sup>±</sup> = net

SURVEY OF 2.000<sup>AC.</sup> TRACT  
VIRGINIA MILITARY SURVEY No. 12273  
JEFFERSON TWP. MADISON COUNTY, OHIO

SCALE; 1" = 40'

DEC. 1986

Surveyed for - Jeff D. Rapp

J. K. Harvey  
Registered Surveyor No. 2570  
Tel. (614) 877-3293

SITE MAP  
Scale; 1" = 1000'

5-87

A.P. 29/07