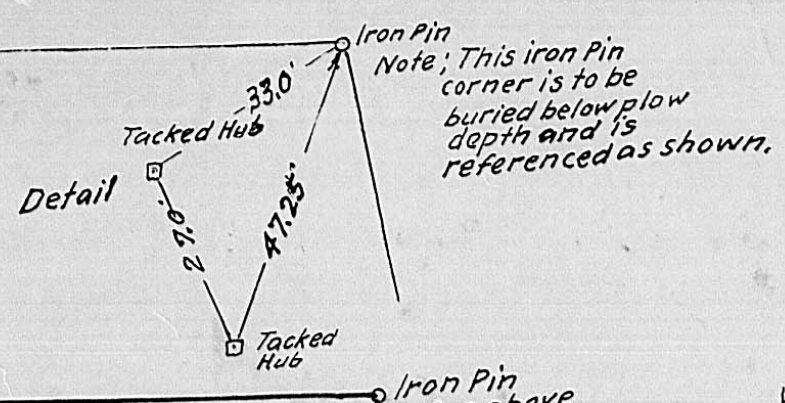
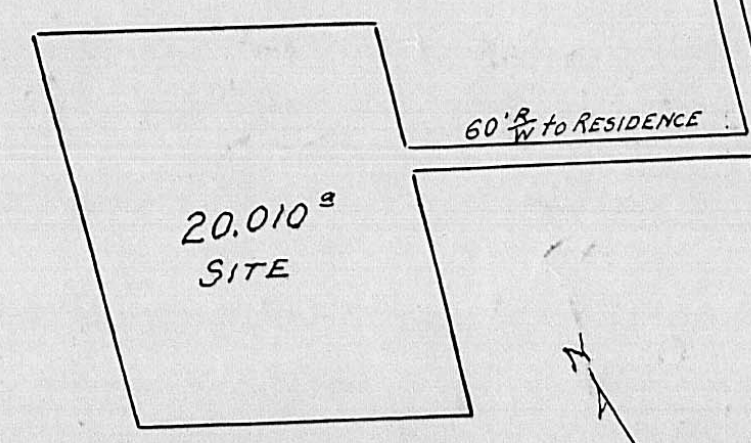


corner in edge of Woods
Iron Pin

S. 59°52'40" E.
823.10'



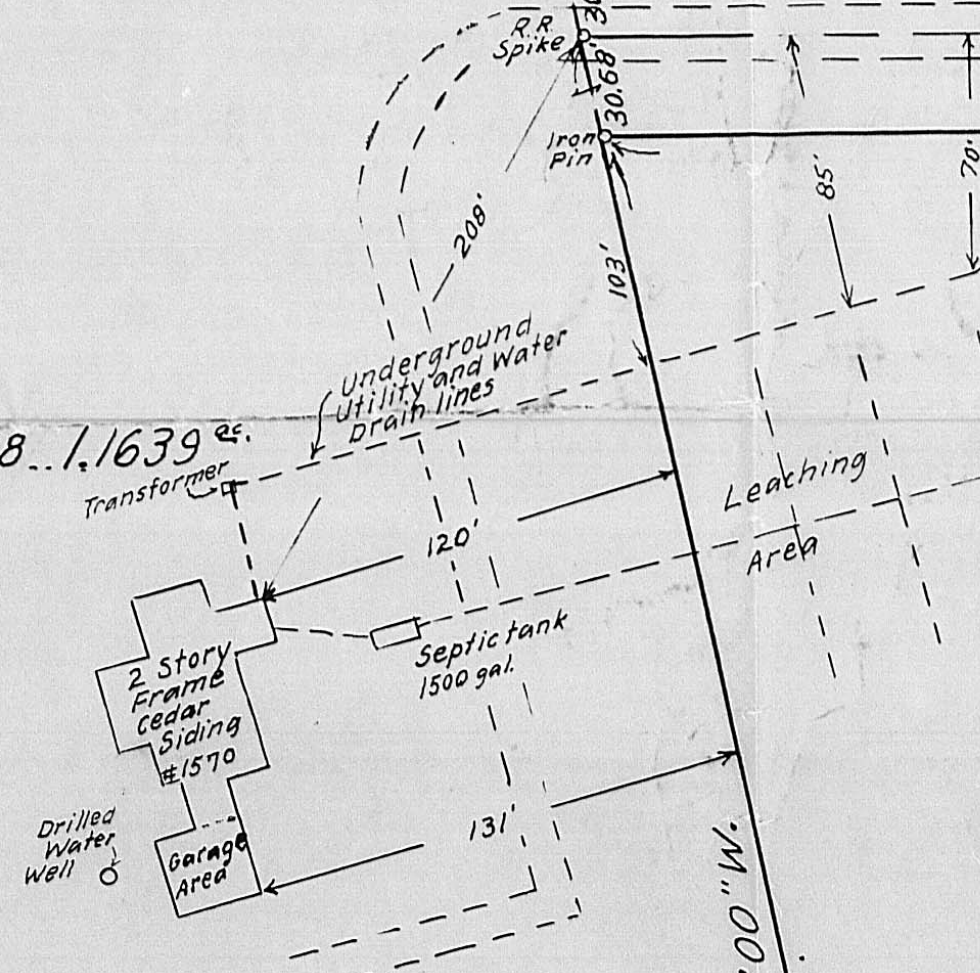
Yoder Lands, Inc.
D.B. 244 pg. 10



V.M.S. 4751 - 0.110^{ac}
 V.M.S. 5192 - 13.539^{ac}
 V.M.S. 6317 - 6.361^{ac}
 20.010^{ac}

Yoder Lands, Inc.
D.B. 244 p. 10
N. 18°00'00" E.
1020.13'

20.010^{acs.} = total
 Includes 60' new Roadway from State Route #38 - 1,1639^{ac}



Private Road to Residence Being part of 20,010^{ac}
 Existing Centerline of lane to Residence +15'
 S. 59°52'40" E. 845.00'
 1,1639^{ac} in Roadway
 V.M.S. 6317
 V.M.S. 5192

Yoder Lands, Inc.
 99,977^{sq}
 Deed Bk 244 pg. 10
 Center of 10' wide Utility Easement Granted by Yoder Land, Inc. to Ohio Edison Company Deed Bk. 248 pg. 613 5' on each side
 Underground Utility lines serving residence:
 (1) Ohio Edison Electric line
 (2) Telephone line
 (3) Water drain from House - 8" Plastic pipe centered in 10' Utility Easement

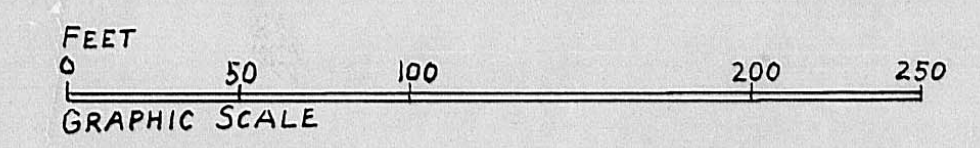
Reference: Being part of a 1134.311^{ac} tract as conveyed to Yoder Lands, Inc. as recorded in Deed Book 244, page 10.

Note: Underground Telephone cable exists along West R/W. line of State Route 38.

Yoder Lands, Inc.

STATE ROUTE #38
 TO MARYSVILLE
 TO LONDON

SURVEY OF 20.010^{ac} TRACT
 VIRGINIA MILITARY SURVEYS 4751, 5192, & 6317
 DEER CREEK TOWNSHIP
 MADISON COUNTY OHIO
 SCALE: 1" = 60'
 JUNE, 1987
 SURVEYED FOR - YODER LANDS, INC.



F. K. Harvey
 Registered Surveyor No. 2570
 Tel. (614) 877-3293

NOTE: This 20.010^{ac} tract is not in Flood Plain.

Iron Pin
 corner in Woods
 N. 59°52'40" W.
 823.10'
 Stake set on line
 Yoder Lands, Inc.
 Deed Bk. 244, pg. 10

NOTE:
 This corner pin to be buried below plow level.