

JERRY L. & DENISE ROBY TROYER
D.V. 215 PG. 10
1.999 AC.

JOHN K. ROBY
D.V. 171 PG. 128
67.16 AC.

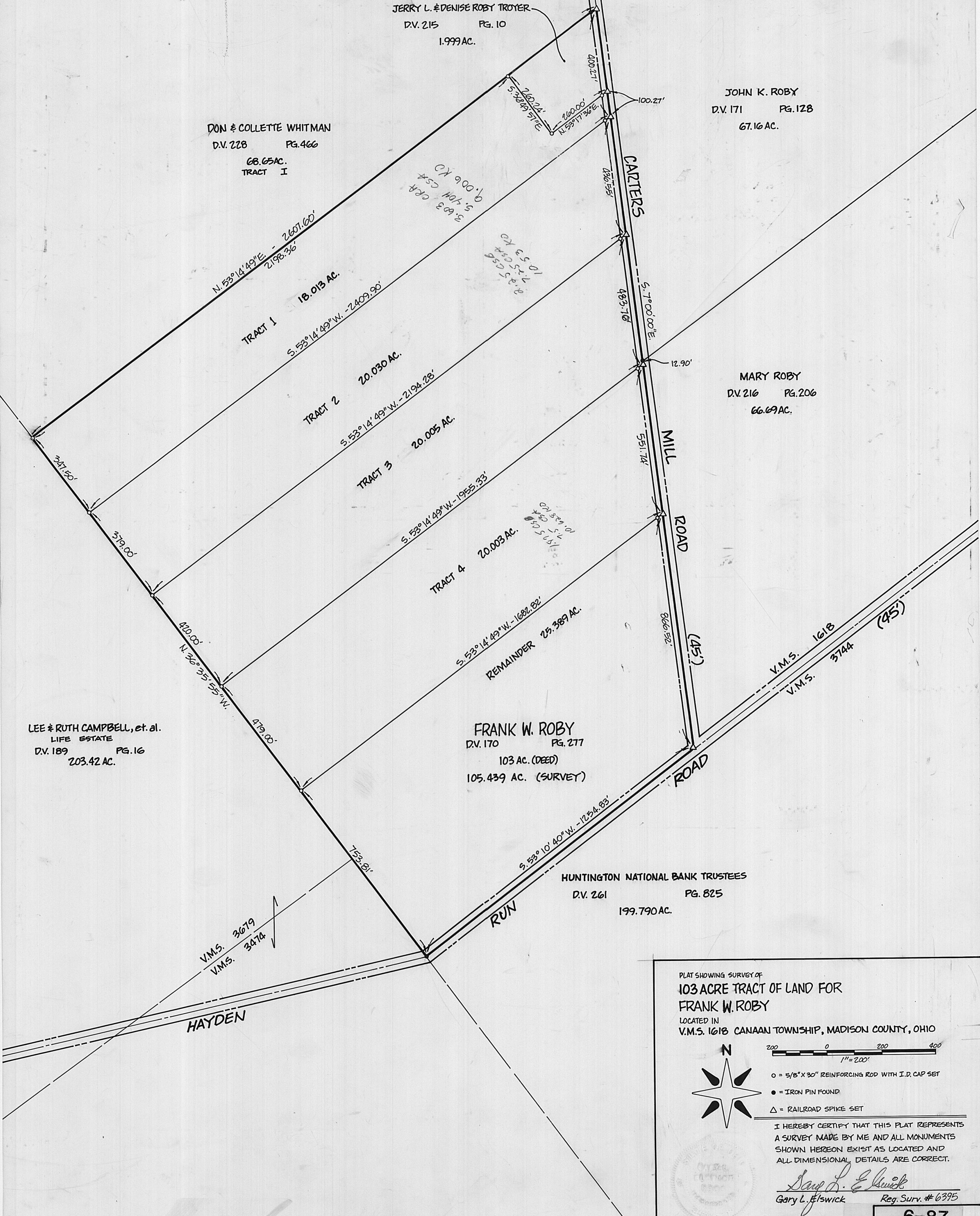
DON & COLLETTE WHITMAN
D.V. 228 PG. 466
68.65 AC.
TRACT I

MARY ROBY
D.V. 216 PG. 206
66.69 AC.

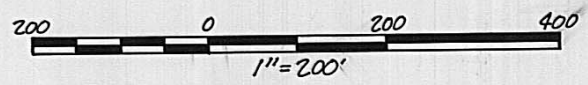
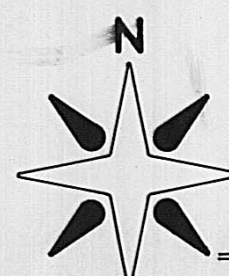
LEE & RUTH CAMPBELL, et. al.
LIFE ESTATE
D.V. 189 PG. 16
203.42 AC.

FRANK W. ROBY
D.V. 170 PG. 277
103 AC. (DEED)
105.439 AC. (SURVEY)

HUNTINGTON NATIONAL BANK TRUSTEES
D.V. 261 PG. 825
199.790 AC.



PLAT SHOWING SURVEY OF
103 ACRE TRACT OF LAND FOR
FRANK W. ROBY
LOCATED IN
V.M.S. 1618 CANAAN TOWNSHIP, MADISON COUNTY, OHIO



- = 5/8" X 30" REINFORCING ROD WITH I.D. CAP SET
- = IRON PIN FOUND
- △ = RAILROAD SPIKE SET

I HEREBY CERTIFY THAT THIS PLAT REPRESENTS
A SURVEY MADE BY ME AND ALL MONUMENTS
SHOWN HEREON EXIST AS LOCATED AND
ALL DIMENSIONAL DETAILS ARE CORRECT.

Gary L. Elswick
Gary L. Elswick Reg. Surv. # 6395