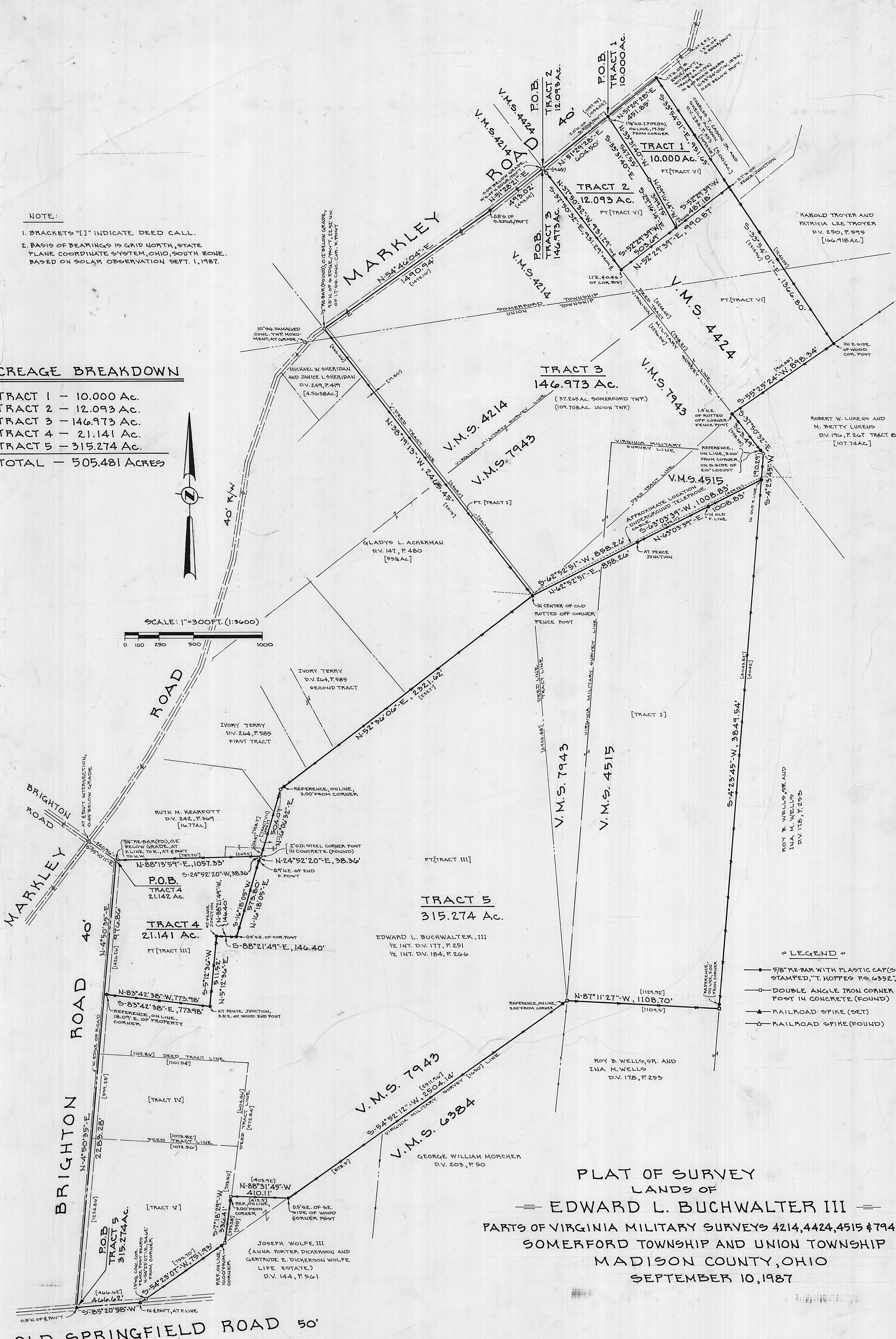
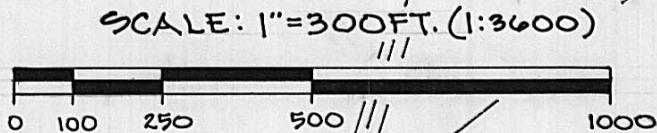


NOTE:

1. BRACKETS "[]" INDICATE DEED CALL.
2. BASIS OF BEARINGS IS GRID NORTH, STATE PLANE COORDINATE SYSTEM, OHIO, SOUTH ZONE. BASED ON SOLAR OBSERVATION SEPT. 1, 1987.

ACREAGE BREAKDOWN

TRACT 1 - 10.000 Ac.
 TRACT 2 - 12.093 Ac.
 TRACT 3 - 146.973 Ac.
 TRACT 4 - 21.141 Ac.
 TRACT 5 - 315.274 Ac.
TOTAL - 505.481 ACRES



- LEGEND**
- 5/8" RE-BAR WITH PLASTIC CAP (SET) STAMPED "T. HOPPE'S P.S. 6352" AT GRADE
 - DOUBLE ANGLE IRON CORNER FENCE POST IN CONCRETE (FOUND)
 - RAILROAD SPIKE (SET)
 - RAILROAD SPIKE (FOUND)

PLAT OF SURVEY
 LANDS OF
EDWARD L. BUCHWALTER III
 PARTS OF VIRGINIA MILITARY SURVEYS 4214, 4424, 4515 & 7943
 SOMERFORD TOWNSHIP AND UNION TOWNSHIP
 MADISON COUNTY, OHIO
 SEPTEMBER 10, 1987



I CERTIFY THIS PLAT TO BE A TRUE AND CORRECT REPRESENTATION OF AN ACTUAL FIELD SURVEY MADE UNDER MY DIRECTION IN SEPTEMBER 1987.
 TERRY A. HOPPE P.S. 6352

HOPPE ENGINEERING
 1533 MOOREFIELD RD
 SPRINGFIELD, OHIO 45503