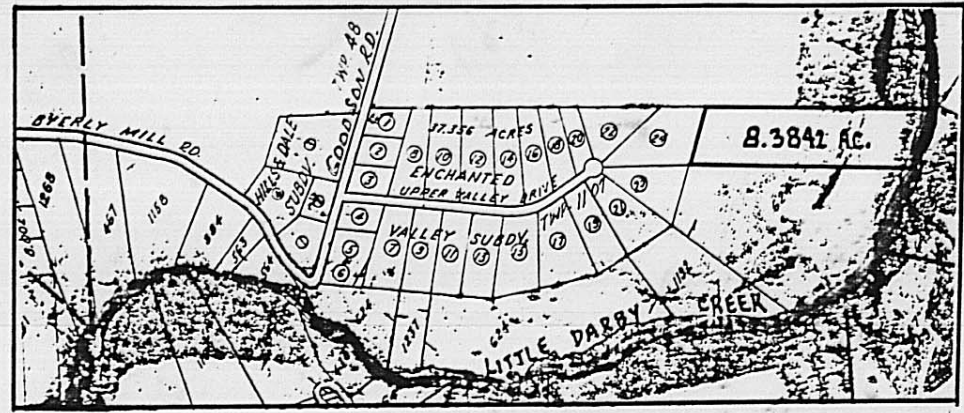


112.53 ACRES VOL. 271 PG. 365 MARGARET HUTSON 1/3 ETAL 2/3  
 AERIAL PAR. # 387  
 WIRE FENCE @ S 32° 57' 06" E  
 1,246.78'

BEING PART OF FORMER 25.3 ACRES TRACT NO ONE VOL. 244 PG. 353  
 PROGRESSIVE FARMS, INC.  
**8.3842 ACRES**  
 VMS 2985

PART OF AUDITOR'S PARCEL NO 08.01150.000  
 NOW SHOWING 35.914 ACRES  
 PRIOR TO 8.3842 ACRES SURVEYED  
 1,233.37'  
 N 32° 57' 06" W

REMAINING PARCEL NO 08.01150.000  
 PROGRESSIVE FARMS, INC. VOL. 244 PG. 353



I CERTIFY THAT I HAVE PERSONALLY MADE A FIELD SURVEY OF THE 8.3842 ACRES  
 PLATTED HEREIN AND HAVE MARKED THE CORNERS AS SHOWN DURING JUNE, 1987.  
 BEARINGS ARE BASED ON ENCHANTED VALLEY A SUBDIVISION RECORDED P.B. 2 PG. 225

*Rodger Irwin Baker* July 15<sup>th</sup> 1987  
 RODGER IRWIN BAKER P.S. LIC. NO. S.05539  
 9430 NIOGA TROOPS ROAD MT. STERLING, OHIO, 43143

REQUESTED BY: RICHARD M. DAILEY

PLAT OF 8.3842 ACRES SURVEYED  
 JUNE 1981 IN JEFFERSON TOWNSHIP  
 VMS 2985 MADISON COUNTY, OHIO  
 FOR PROGRESSIVE FARMS, INC.  
 RE: DEED VOLUME 244 PAGE 353  
 EXTENDED FROM LOT NO 24 OF A  
 SUBDIVISION NAMED ENCHANTED VALLEY  
 SEE PLAT BOOK 2 AT PAGE 225