

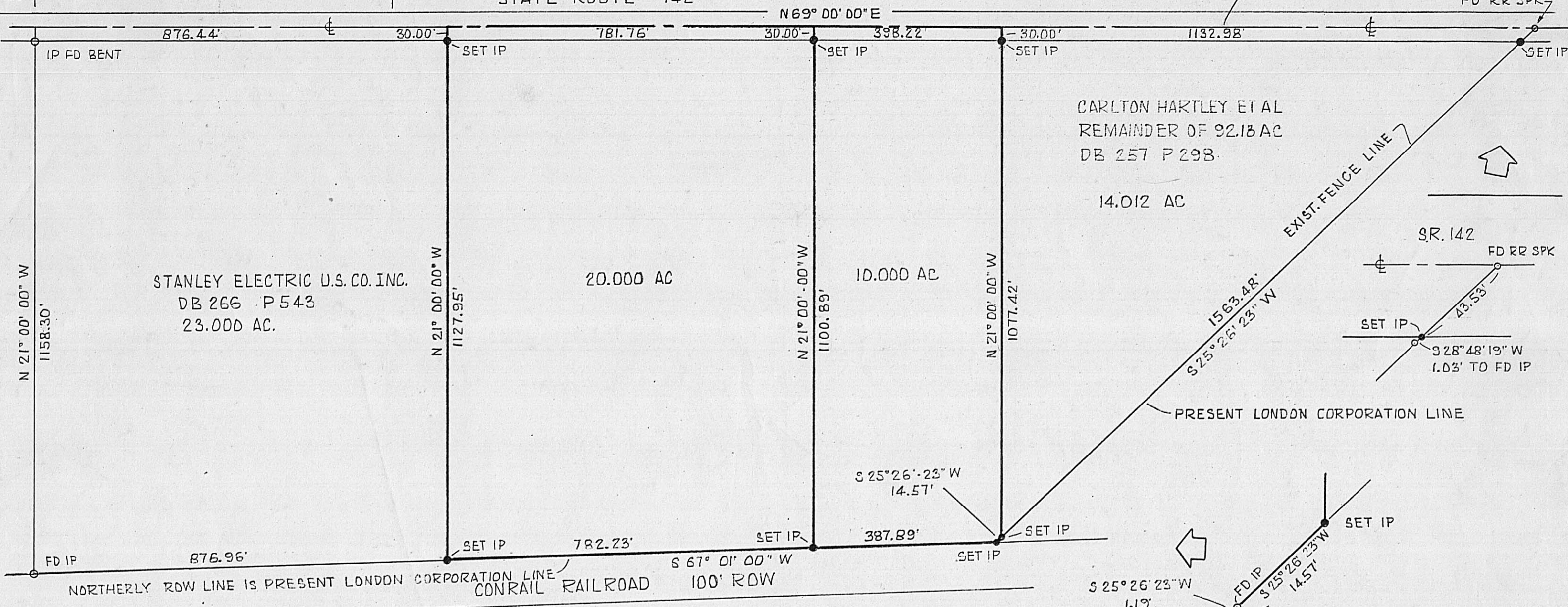
921.14' TO FD SQ. IP
IN ϕ SR 142

REFERENCE FOR ROW
ODOT, MAD. CO., SH 6, SEC A-1 & A-2

CENTERLINE OF ROAD IS PRESENT LONDON CORPORATION LINE

NE COR.
92.18 AC
FD RR SPK

STATE ROUTE 142



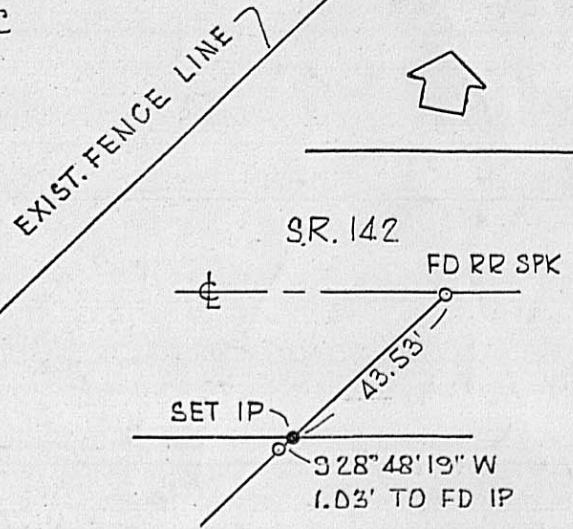
STANLEY ELECTRIC U.S. CO. INC.
DB 266 P 543
23.000 AC.

20.000 AC

10.000 AC

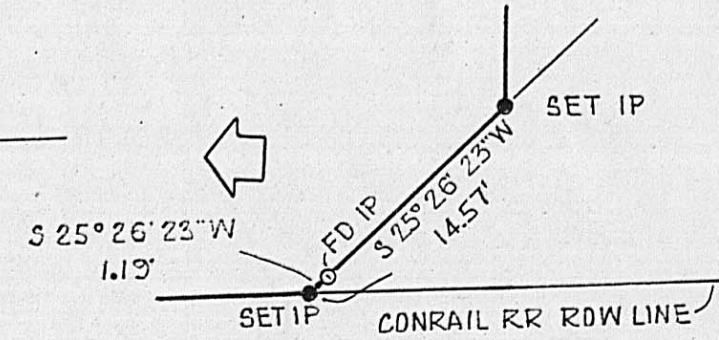
CARLTON HARTLEY ET AL
REMAINDER OF 92.18 AC
DB 257 P 298.

14.012 AC



PRESENT LONDON CORPORATION LINE

S 25° 26' 23" W
14.57'



RAILROAD ROW PLANS YEAR 1916 P.C.C. & ST. L. R.R. CO.
STATION 1191+02 TO STATION 1243+82
FORMERLY THE C&X RR AND ORIGINALLY THE LITTLE MIAMI RR
REFERENCE BEARING IS ON ϕ OF SR 142 AS FOUND IN DB 195 P 30

IN VMS 5801



PLAT OF A 20.000 AC & A 10.000 AC TRACT
OUT OF A 92.18 CARLTON HARTLEY TRACT
CITY OF LONDON, OHIO
AUGUST 1987 #844-87 SCALE 1"=200'
THE THOMAS ENGINEERING & SURVEYING CO.

ALL SET IP'S ARE 5/8" REBARS WITH YELLOW PLASTIC CAPS
EMBOSSED "THOMAS ENGR. & SURVEYING"



Robert G. Watts
REGISTERED SURVEYOR **85-87**