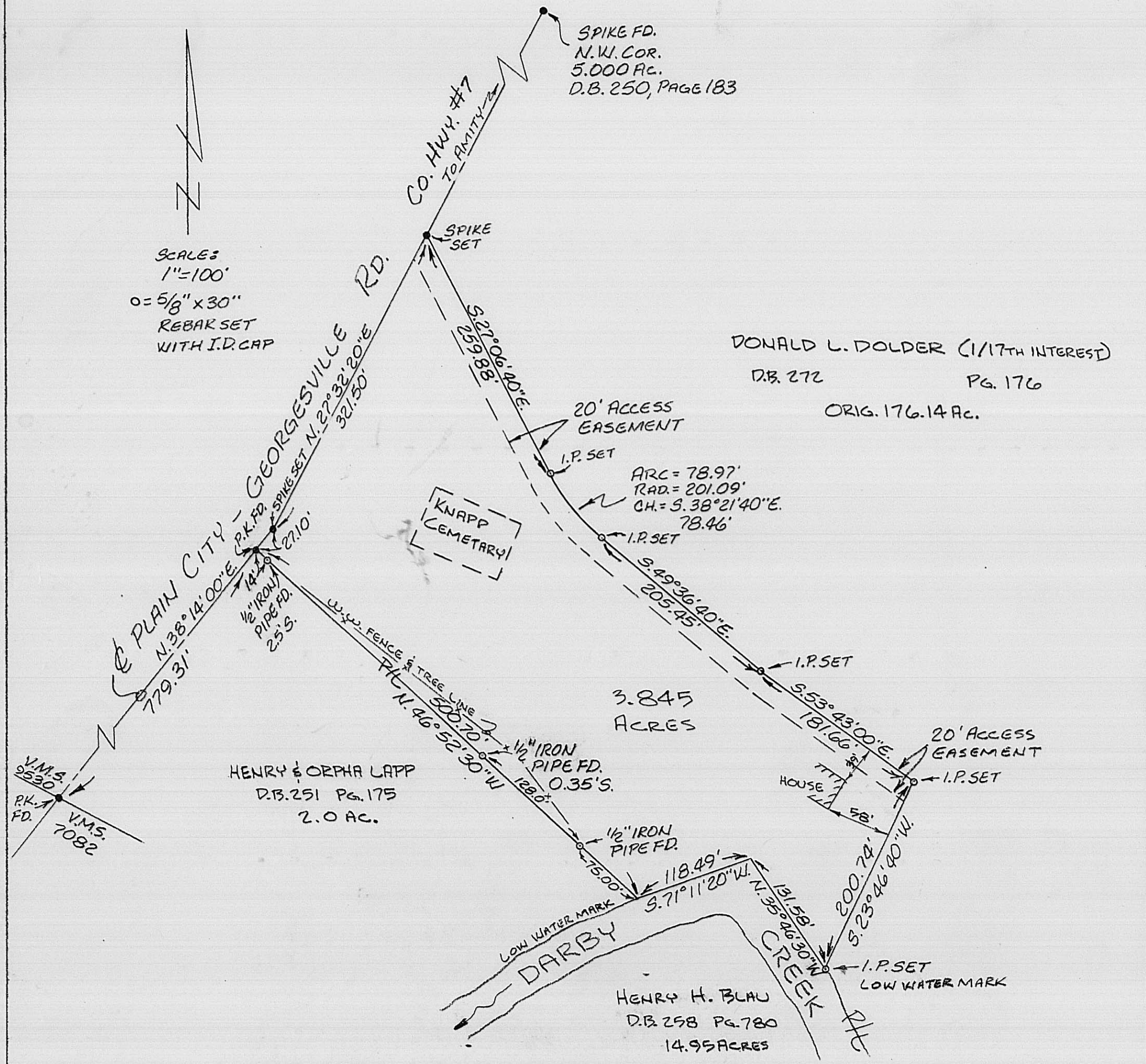




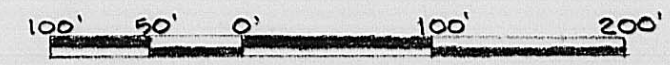
SCALE:
1" = 100'
O = 5/8" x 30"
REBAR SET
WITH I.D. CAP

SPIKE FD.
N.W. COR.
5.000 AC.
D.B. 250, PAGE 183

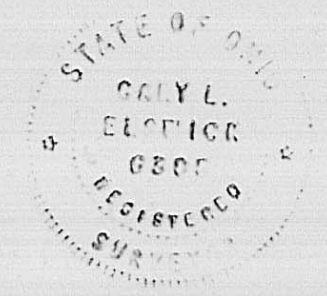
DONALD L. DOLDER (1/17th INTEREST)
D.B. 272 PG. 176
ORIG. 176.14 Ac.



PLATSHOWING SURVEY OF
3.845 ACRE TRACT FOR
DONALD L. DOLDER
LOCATED IN
V.M.S. 9530 CANAAN TOWNSHIP, MADISON COUNTY, OHIO



I HEREBY CERTIFY THAT THIS PLAT REPRESENTS
A SURVEY MADE IN NOV., 1987, ALL MONUMENTS
SHOWN HEREON EXIST AS SHOWN AND
ALL DIMENSIONAL DETAILS ARE CORRECT



Gary L. Elsnick

GARY L. ELSNICK
GROVE CITY, OHIO
614-871-3402

REG. SURV. # 6395

AERIAL PHOTO 7/107

2-88